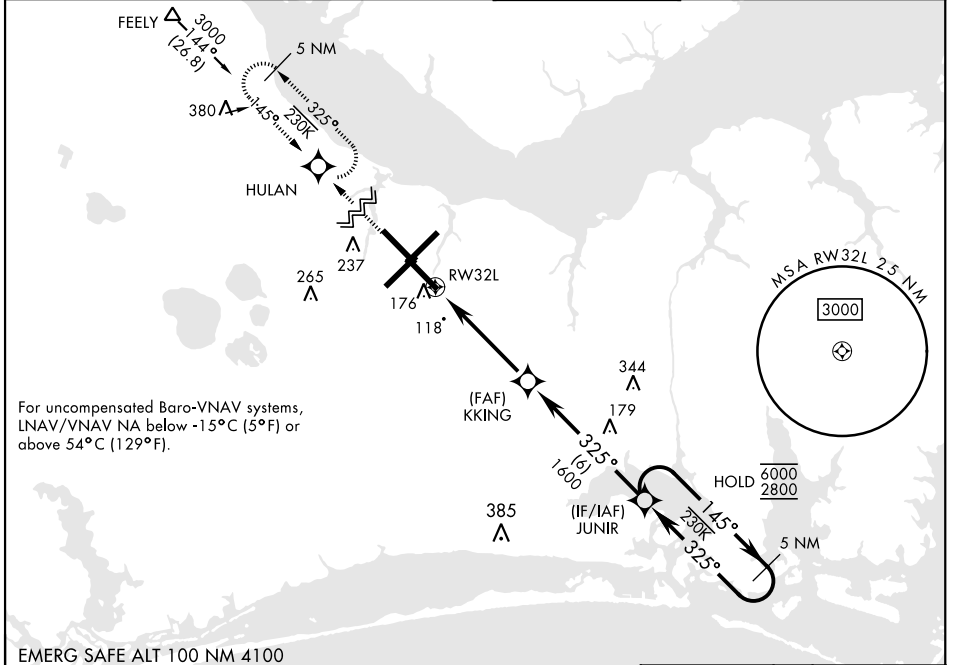


RNAV (GPS) RWY 32L

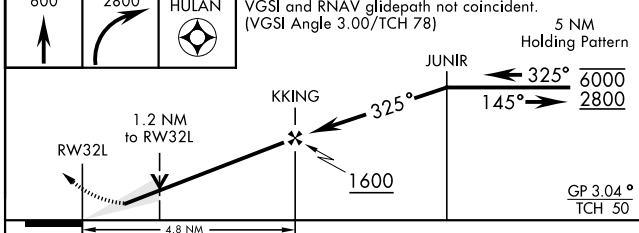
WAAS Chan 54304 W32A	APCH CRS 325°	Rwy ldg TDZE 26 Arprt Elev 29	7551
--	-------------------------	---	-------------

[USN] CHERRY POINT MCAS (CUNNINGHAM FLD) (KNKT)

RNP APCH ▼ *When ALS inop, increase vis to ¾ mile. ***When ALS inop, increase vis to 1 mile. CAT CD vis to 1¼ miles.		ALSIF-1 	MISSED APPROACH: Climb to 600 then climbing right turn to 2800 direct HULAN and hold.			
ATIS 127.475 244.875	(E) 119.75 (E) 132.575 (W) 119.35	APP CON 360.775 (abv 2600') 299.6 (at/blw 2600') 377.175 (N) 124.1 268.7	TOWER 121.3 340.2	GND CON 128.625 239.025	CLNC DEL 125.95 316.125	ASR/ PAR

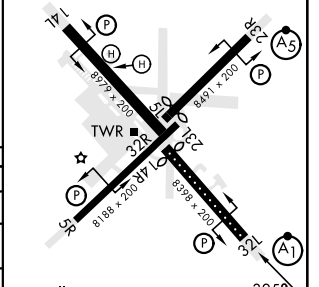


EMERG SAFE ALT 100 NM 4100



ELEV 29	D	TDZE 26
---------	----------	---------

Rwy 32R, 23L, 14R, 5L marked in center mat area.



CATEGORY	A	B	C	D
LPV DA*		225-½	200	(200-½)
LNAV/ VNAV DA**		400-⅝	375	(400-⅝)
LNAV MDA***	460-½	435 (500-½)	460-¾	435 (500-¾)
C CIRCLING	580-1	551 (600-1)	580-1½	580-2
			551 (600-1½)	551 (600-2)

HIRL all rwys
 REIL Rwy 5L and 14R
 Rwy 5L-23R ldg 7552'
 Rwy 14R-32L ldg 7551'

RNAV (GPS) RWY 32L

SE-2, 28 NOV 2024 to 26 DEC 2024

SE-2, 28 NOV 2024 to 26 DEC 2024