

EL CENTRO, CALIFORNIA

RNAV (GPS) RWY 8

WAAS CH 89932 W08A	APCH CRS 079°	Rwy ldg TDZE Arprt Elev	9503 -46 -42
---------------------------------	-------------------------	-------------------------------	---

- (USN)

EL CENTRO NAF (VRACIU FLD) (KNJK)

RNP APCH

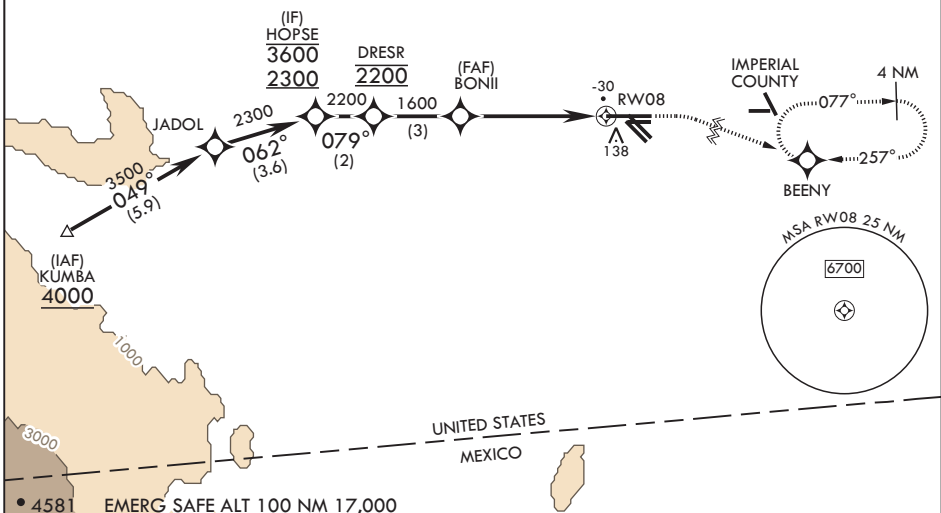
▼ Circling visibility reduction by helicopters NA.
When tower closed, increase visibility to 1 mile.

MISSED APPROACH: Climb to 800, then climbing right turn to 2400 direct BEENY and hold.

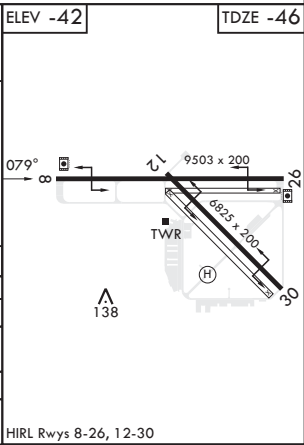
ATIS* 269.275	APP CON/DEP CON 128.55 292.2	TOWER* 119.1 360.2	GND CON 121.9 254.35	CLNC DEL 340.2
-------------------------	--	------------------------------	--------------------------------	--------------------------

Circling to Rwy 30 NA at night.

For uncompensated Baro-VNAV systems, LNAV/VNAV NA below -14°C (7°F) or above 54°C (129°F).



HOPSE	800	2400	BEENY	ELEV -42	TDZE -46
3600 2300	↑ crs 079°	↷	⊙		
GP 3.00° TCH 50	DRESR	BONII	RWY 08		
	079°	2200	1600	5 NM	
CATEGORY	A	B	C	D	
LPV DA	204-¾	250	(300-¾)		
LNAV/VNAV DA	204-¾ 250 (300-¾)	235-⅞ 281 (300-⅞)	249-⅞ 295 (300-⅞)	268-⅞ 314 (400-⅞)	
LNAV MDA	460-1	506 (600-1)	460-1½	506 (600-1½)	
C CIRCLING	480-1	522 (600-1)	480-1½ 522 (600-1½)	520-2 562 (600-2)	



EL CENTRO, CALIFORNIA

Orig 13JUL23

32°50'N - 115°40'W

EL CENTRO NAF (VRACIU FLD) (KNJK)

RNAV (GPS) RWY 8

SW-3, 28 NOV 2024 to 26 DEC 2024

SW-3, 28 NOV 2024 to 26 DEC 2024