

VOR/DME RWY 30

EL CENTRO NAF (VRACIU FLD) (KNJK)

[USN]

VORTAC IPL 115.9 Chan 106	APCH CRS 284°	Rwy Ildg TDZE Arpt Elev 6825 -42 -42
-----------------------------------------------	-------------------------	--------------------------------------------------------------------------

▼ Visibility reduction by helicopters NA. Procedure NA at night.

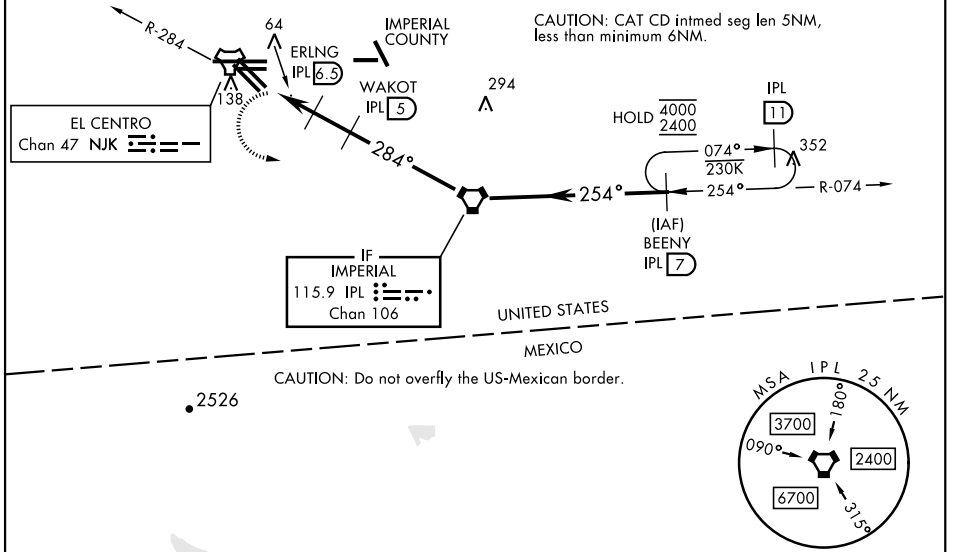
MISSED APPROACH: Climb to 600, then climbing left turn to 2400, intercept IPL VORTAC R-074 to BEENY and hold.

ATIS ★ 269.275	APP CON/DEP CON 128.55 292.2	TOWER ★ 119.1 360.2	GND CON 121.9 254.35	CLNC DEL 340.2
--------------------------	----------------------------------------	-------------------------------	--------------------------------	--------------------------

Rwy 30: 20:1 visual area penetrated by Fence, lit, 289 ft from thld, 213 ft right of course, 8 AGL/-34 MSL
Fence, 199 ft from thld, 305 ft right of course, 8 AGL/-34 MSL,
Fence, 504 ft from thld, 3 ft right of course, 8 AGL/-34 MSL,

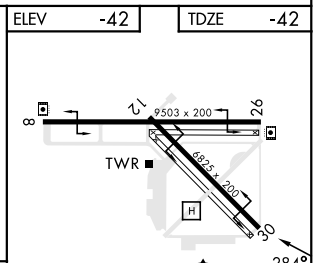
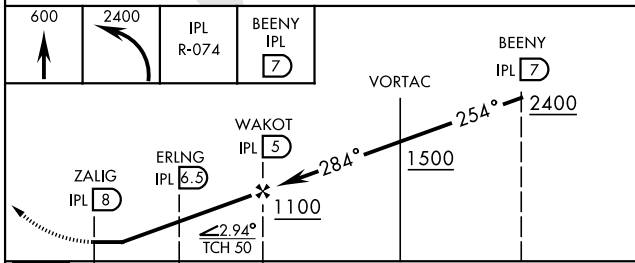
CAUTION: Extensive civil aircraft operations at Imperial County airport.

CAUTION: CAT CD intmed seg len 5NM, less than minimum 6NM.



CAUTION: Do not overfly the US-Mexican border.

EMERG SAFE ALT 100 NM 17,000 from NJK TACAN



CATEGORY	A	B	C	D
S-30	380-1 422 (500-1)	380-1¼ 422 (500-1¼)	480-1½ 522 (600-1½)	520-2 562 (600-2)
CIRCLING	480-1 522 (600-1)	480-1½ 522 (600-1½)	520-2 562 (600-2)	

ELEV -42	TDZE -42
HIRL Rwys 8-26, 12-30	

VOR/DME RWY 30

SW-3, 28 NOV 2024 to 26 DEC 2024

SW-3, 28 NOV 2024 to 26 DEC 2024