


APP CRS	Rwy Idg	7110
211°	TDZE	404
	Apt Elev	410

RNAV (RNP) Z RWY 21R

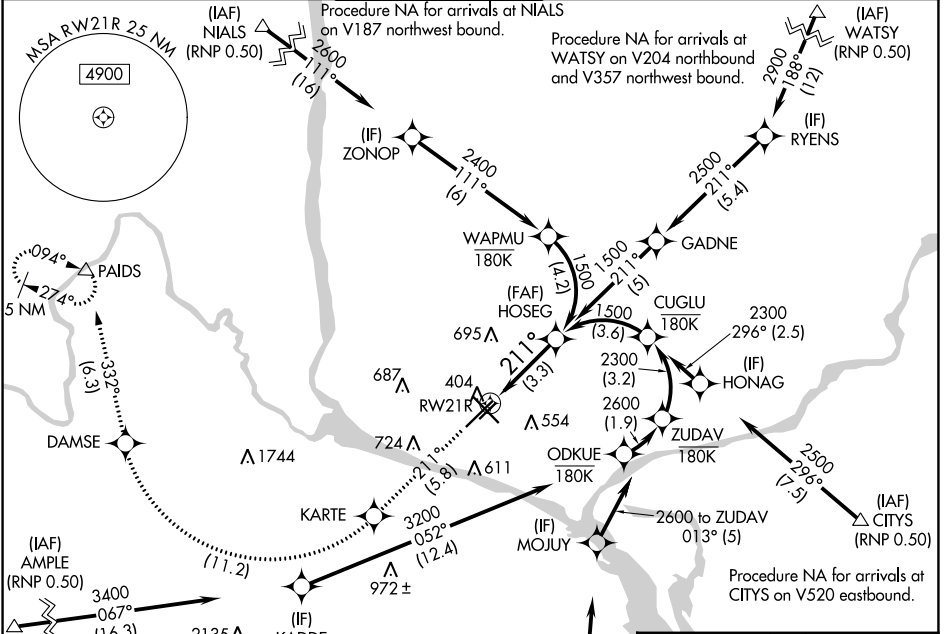
TRI-CITIES (PSC)

⚠ For uncompensated Baro-VNAV systems, procedure NA below -14°C (7°F) or above 54°C (130°F). GPS required. RF required. For inoperative MALSR, increase RNP 0.11 all Cats visibility to RVR 5700 and RNP 0.30 all Cats visibility to 1 3/8 mile.

MALSR 

MISSED APPROACH: Climb to 5200 on track 211° to KARTE, right turn to DAMSE, and on track 332° to PAIDS and hold.

ATIS 125.65	SPOKANE APP CON * 128.75 377.2	TRI-CITIES TOWER* 135.3 (CTAF) 0 323.3	GND CON 121.8	CLNC DEL 120.0	UNICOM 122.95
-----------------------	------------------------------------------	---------------------------------------------------------	-------------------------	--------------------------	-------------------------



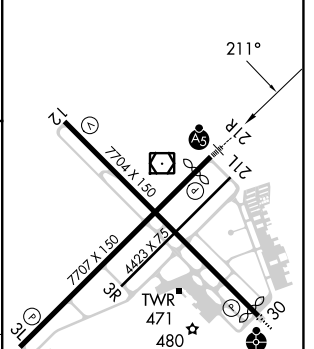
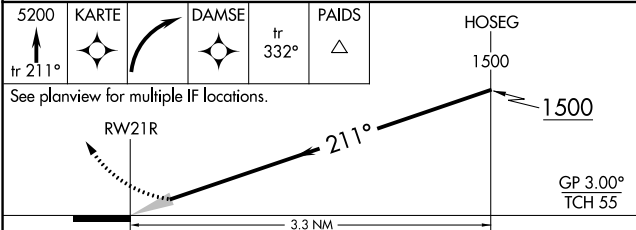
ELEV 410	D TDZE 404
----------	-------------------

Procedure NA for arrivals at NIALS on V187 northwest bound.

Procedure NA for arrivals at WATSY on V204 northbound and V357 northwest bound.



Procedure NA for arrivals at AMPL on V4 westbound and V520 southwest bound.

Procedure NA for arrivals at GINLE on V298 southeast bound.



CATEGORY	A	B	C	D
RNP 0.11 DA		754/33	350 (400-3/4)	
RNP 0.30 DA		832/48	428 (500-1)	

AUTHORIZATION REQUIRED

REIL Rwy 3L and 12
MIRL Rwy 12-30 
HIRL Rwy 3L-21R 

NW-1, 28 NOV 2024 to 26 DEC 2024

NW-1, 28 NOV 2024 to 26 DEC 2024