

MAYNR THREE DEPARTURE (RNAV)

SE-3, 28 NOV 2024 to 26 DEC 2024

**TOP ALTITUDE:
ASSIGNED BY ATC**

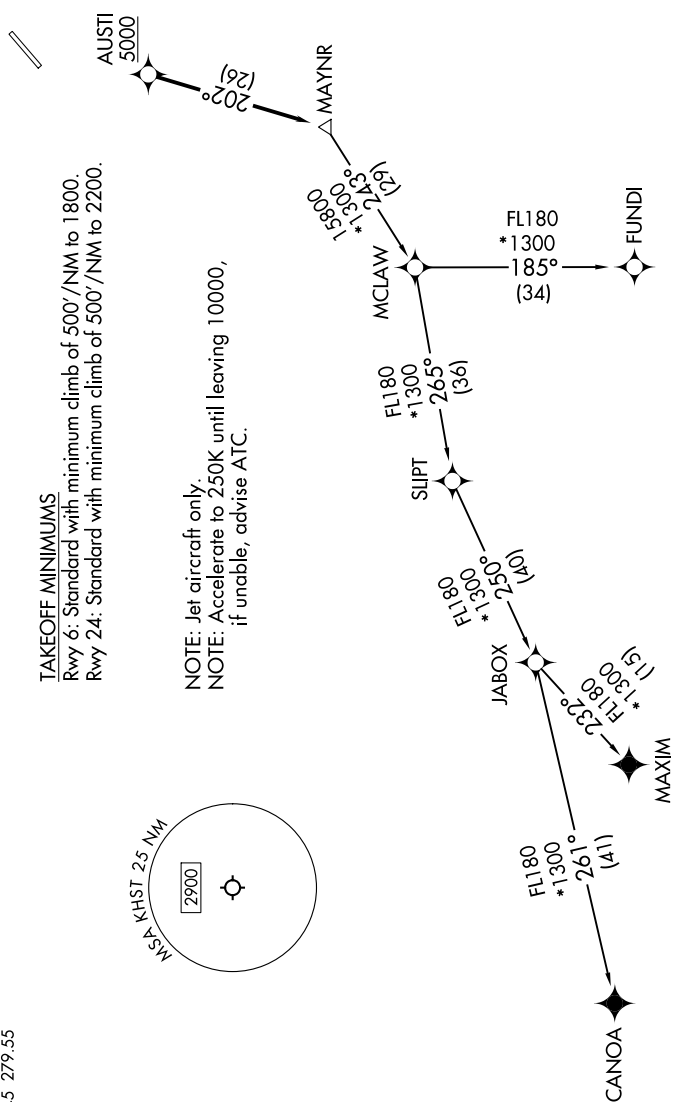
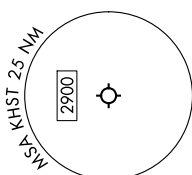
RNAV 1 - DME/DME/IRU or GPS.
From SLIPT to MAXIM: RNAV 1 - GPS.
From SLIPT to CANOA: RNAV 1 - GPS.
RADAR required for non-GPS equipped aircraft.
RADAR required.

MIAMI DEP CON
125.5 354.1
ATIS *
132.275 269.9
CLNC DEL
121.75 275.8
GND CON
121.75 275.8
HOMESTEAD TOWER
133.45 279.55

TAKEOFF MINIMUMS

Rwy 6: Standard with minimum climb of 500'/NM to 1800.
Rwy 24: Standard with minimum climb of 500'/NM to 2200.

NOTE: Jet aircraft only.
NOTE: Accelerate to 250K until leaving 10000,
if unable, advise ATC.



(CONTINUED ON FOLLOWING PAGE)

NOTE: Chart not to scale.

SE-3, 28 NOV 2024 to 26 DEC 2024