

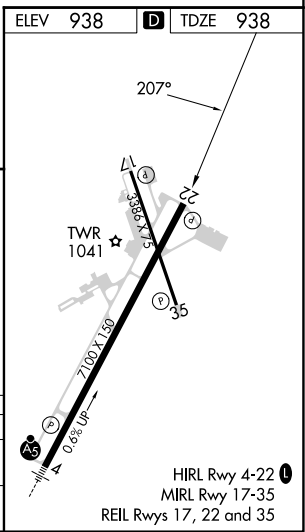
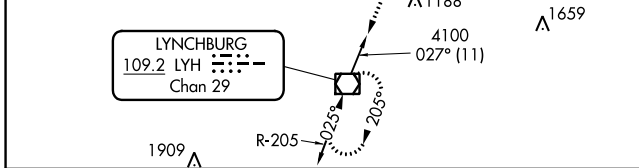
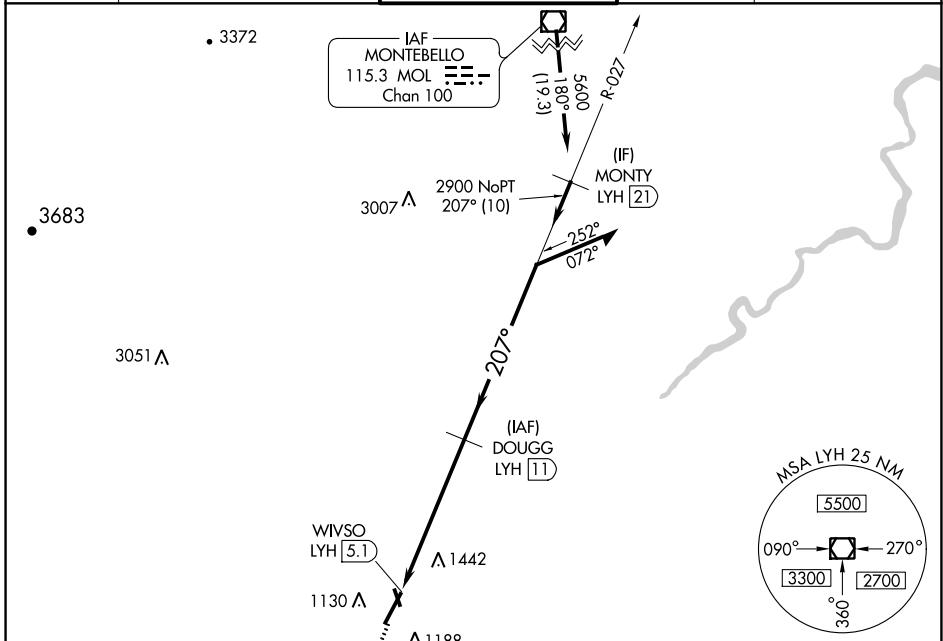
VOR/DME LYH	APP CRS	Rwy Idg	<b>7100</b>
<b>109.2</b>	<b>207°</b>	TDZE	<b>938</b>
Chan <b>29</b>		Apt Elev	<b>938</b>

# VOR RWY 22

LYNCHBURG RGNL/PRESTON GLENN FLD (LYH)

DME required.		MISSED APPROACH: Climb to 2900 direct LYH VOR/DME and hold.		
<p><b>▼</b> Rwy 22 helicopter visibility reduction below <math>\frac{3}{4}</math> SM NA.  <b>▲</b> Circling Rwy 17 NA at night.</p>				

ATIS <b>119.8</b>	ROANOKE APP CON <b>135.0 254.325</b>	LYNCHBURG TOWER ★ <b>127.65 (CTAF) 0 257.8</b>	GND CON <b>121.9</b>	UNICOM <b>122.95</b>
----------------------	---	---	-------------------------	-------------------------



CATEGORY	A	B	C	D
S-22	1740-1 802 (900-1)	1740-1¼ 802 (900-1¼)	1740-2¼ 802 (900-2¼)	1740-2½ 802 (900-2½)
CIRCLING	1740-1 802 (900-1)	1780-1¼ 842 (900-1¼)	1800-2½ 862 (900-2½)	1800-2¾ 862 (900-2¾)

# VOR RWY 22

NE-3, 28 NOV 2024 to 26 DEC 2024

NE-3, 28 NOV 2024 to 26 DEC 2024