

HI-TACAN Z RWY 5R

VORTAC EDW 116.4 Chan 111	APCH CRS 046°	Rwy Idg 15,024 TDZE 2303 Arprt Elev 2311
---	-------------------------	---

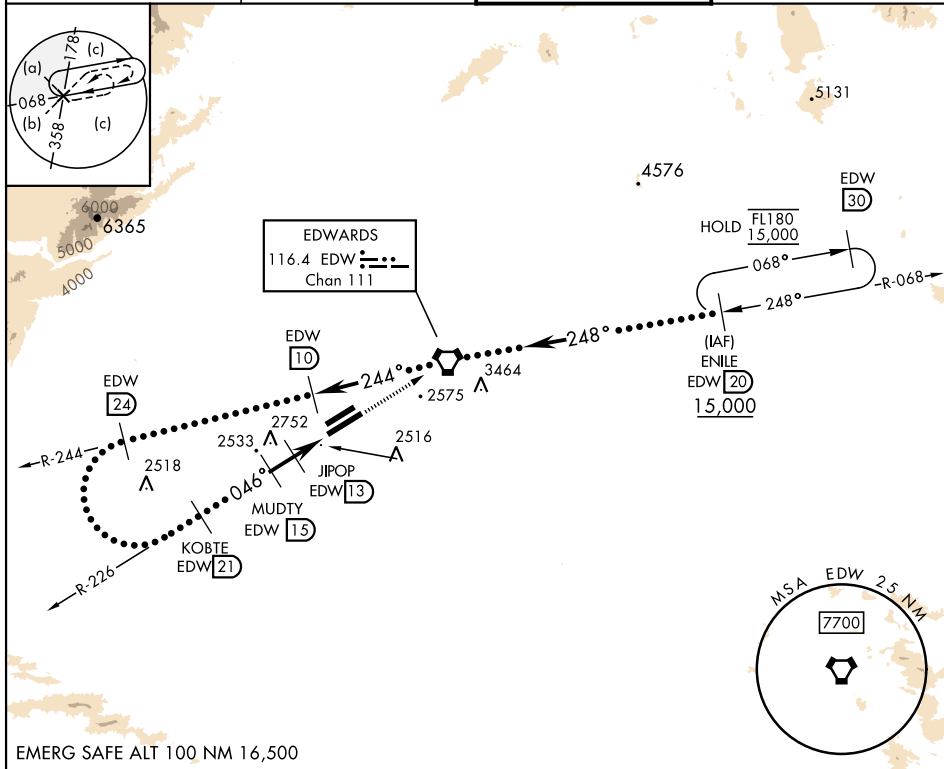
[USAF]

EDWARDS AFB (KEDW)

▼ * Circling not authorized NW of Rwy 5L-23R.
 Circling not authorized at night to Rwy 5L-23R.

MISSED APPROACH: Track EDW VORTAC R-226 to EDW.
 Intercept EDW R-068 to ENILE and hold. Maintain 15,000.
 Missed approach requires use of RNAV or ATC RADAR monitoring.

ATIS ★ 127.425 269.9	JOSHUA APP/DEP CON 133.65 348.7	TOWER ★ 120.7 (CTAF) 318.1 (CTAF)	GND CON 121.8 225.4
--------------------------------	---	---	-------------------------------

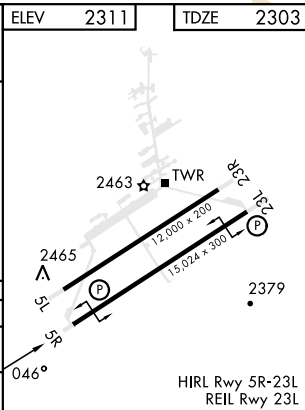


SW-3, 28 NOV 2024 to 26 DEC 2024

SW-3, 28 NOV 2024 to 26 DEC 2024

EMERG SAFE ALT 100 NM 16,500

Remain within 28 NM	R-244 EDW 24	R-244 EDW 10	15,000 EDW R-226	ELEV 2311	TDZE 2303
	5700	15,000	EDW 10		
	KOBTE R-226 EDW 21	MUDTY EDW 15	JIPOP EDW 13		
	5300	3900	3200		
	2.92° TCH 47	2 NM	3 NM		
CATEGORY	C	D	E		
S-5R	2820-1½	517	(600-1½)		
CIRCLING*	2880-1½ 569 (600-1½)	2880-2	569 (600-2)		



HI-TACAN Z RWY 5R