

APCH CRS **046°**  
 Rwy Idg **15,024**  
 TDZE **2303**  
 Arprt Elev **2311**

(-USAF)

EDWARDS AFB (KEDW)

**▽** \* Circling not authorized NW of Rwy 5L-23R.

**MISSED APPROACH:** Climb to 5700 direct KIIRK and hold, continue climb-in-hold to 5700.

ATIS\*  
**127.425 269.9**

JOSHUA APP CON/DEP CON  
**133.65 348.7**

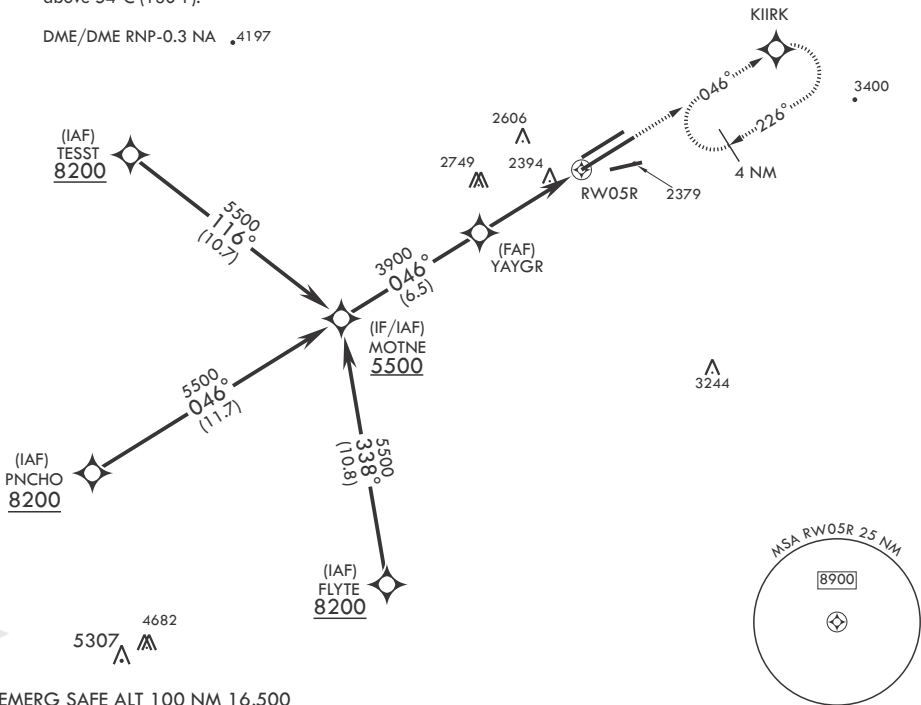
TOWER\*  
**120.7 (CTAF) 318.1 (CTAF)**

GND CON  
**121.8 225.4**

For uncompensated Baro VNAV systems, procedure NA below -19°C (-2°F) or above 54°C (130°F).

5296

DME/DME RNP-0.3 NA 4197



EMERG SAFE ALT 100 NM 16,500

MOTNE	VGSI and descent angles not coincident.					5700	KIIRK	ELEV 2311	TDZE 2303
5500	046°					3900	YAYGR	2680	
GP 3.00°	1.5 NM to RWY05R					4.8 NM	RWY05R		
CATEGORY	A	B	C	D	E				
LNAV/VNAV DA	2820-1 <sup>3</sup> / <sub>8</sub>		517	(600-1 <sup>3</sup> / <sub>8</sub> )					
LNAV MDA	2820-1	517 (600-1)	2820-1 <sup>3</sup> / <sub>8</sub>	517	(600-1 <sup>3</sup> / <sub>8</sub> )				
<b>C</b> CIRCLING*	2880-1	569 (600-1)	2880-1 <sup>1</sup> / <sub>2</sub> 569 (600-1 <sup>1</sup> / <sub>2</sub> )	2880-2	569 (600-2)	HIRL Rwy 5R-23L REIL Rwy 23L			

SW-3, 28 NOV 2024 to 26 DEC 2024

SW-3, 28 NOV 2024 to 26 DEC 2024