

CARGO ONE DEPARTURE (CARGO1•CARGO)

YUMA MCAS/YUMA INTL (KNYL)

YUMA, ARIZONA

ATIS ★
 118.8 273.5
 CLNC DEL
 118.0 336.4
 GND CON
 121.9 314.0
 YUMA TOWER ★
 119.3 377.075
 YUMA DEP CON
 125.55 282.325

AL-511 [USN]

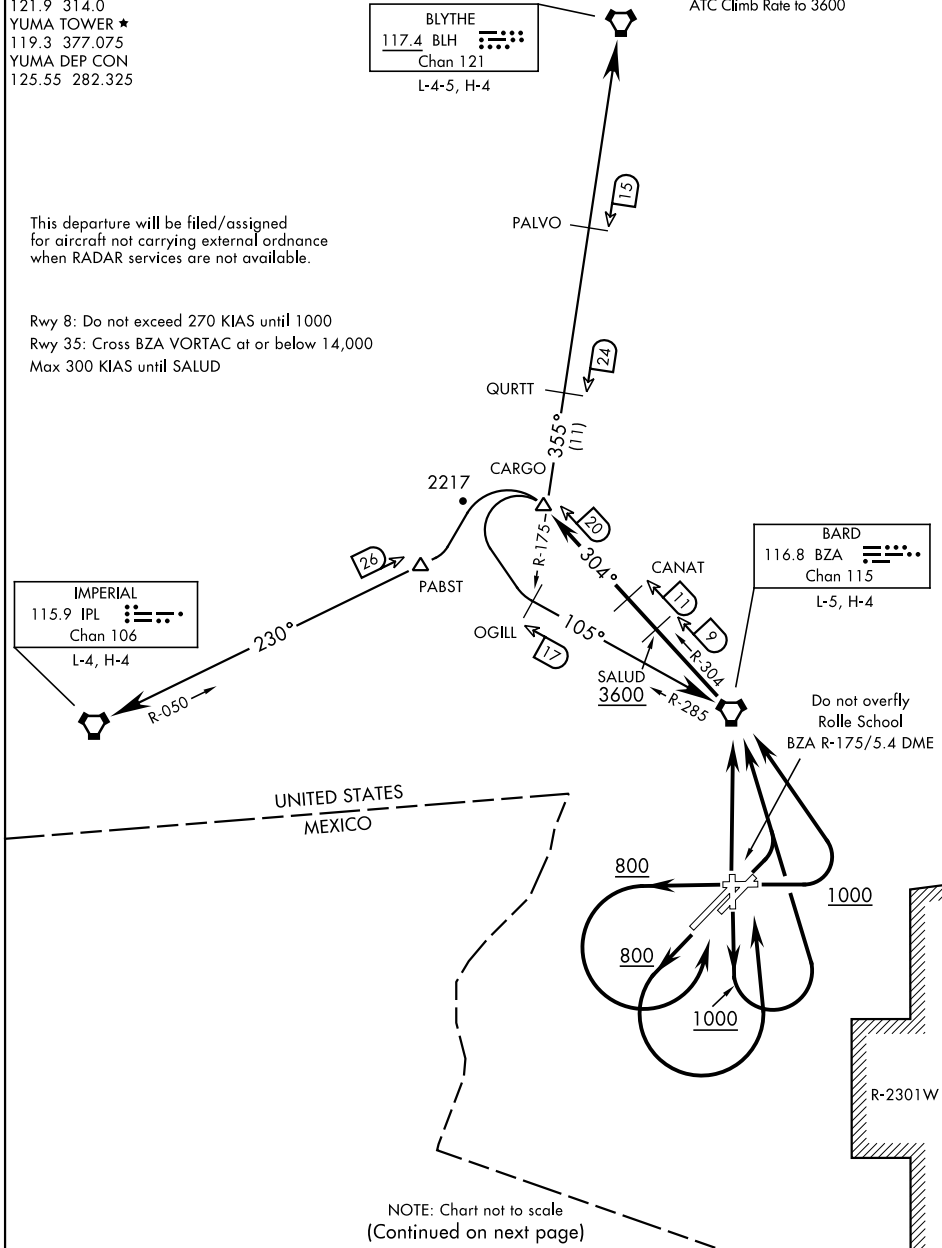
Rwy	Knots	60	120	180	240	300	360
3L/R	V/V(fpm)	225	450	675	900	1125	1350
26	V/V(fpm)	210	420	630	840	1050	1260
35	V/V(fpm)	241	482	723	964	1205	1446

ATC Climb Rate to 3600

BLYTHE
 117.4 BLH
 Chan 121
 L-4-5, H-4

This departure will be filed/assigned for aircraft not carrying external ordnance when RADAR services are not available.

Rwy 8: Do not exceed 270 KIAS until 1000
 Rwy 35: Cross BZA VORTAC at or below 14,000
 Max 300 KIAS until SALUD



SW-4, 28 NOV 2024 to 26 DEC 2024

SW-4, 28 NOV 2024 to 26 DEC 2024

CARGO ONE DEPARTURE (CARGO1•CARGO)

YUMA, ARIZONA

YUMA MCAS/YUMA INTL (KNYL)

Amdt 1 17JUN21