

YUMA, ARIZONA

RNAV (GPS) RWY 17

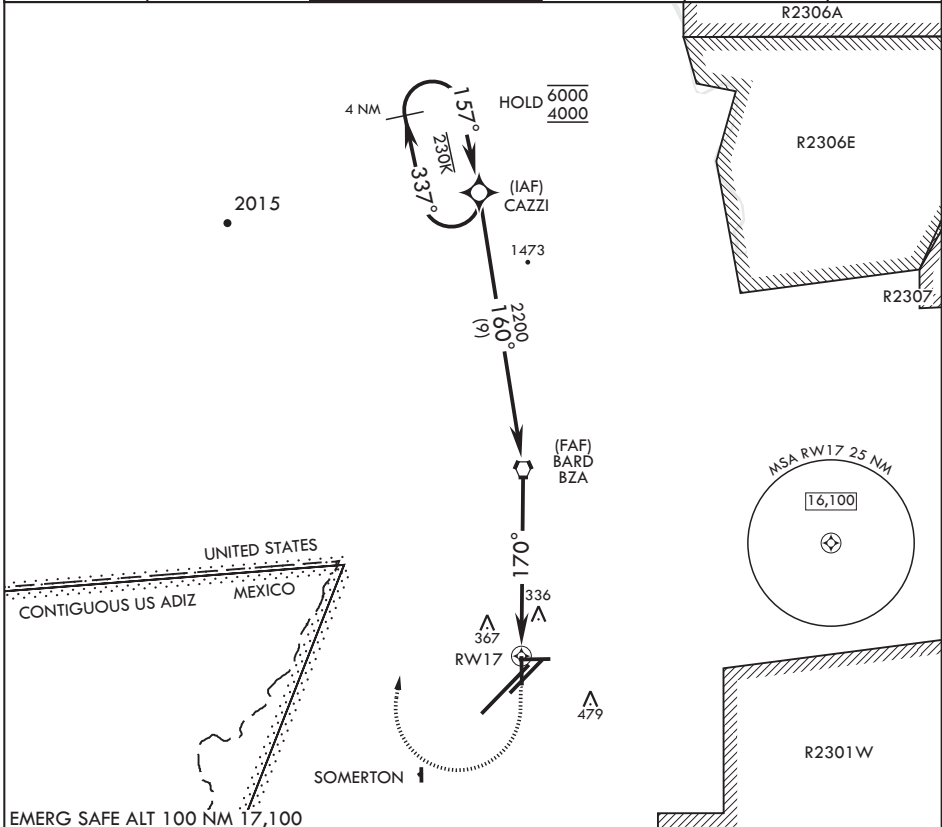
APCH CRS	Rwy Idg	5710
170°	TDZE	197
	Arprt Elev	213

AL-511 (USN)

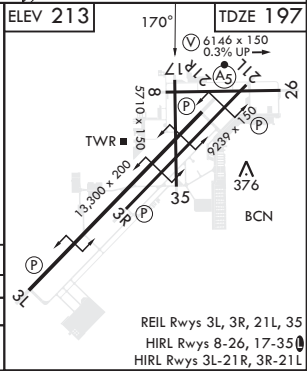
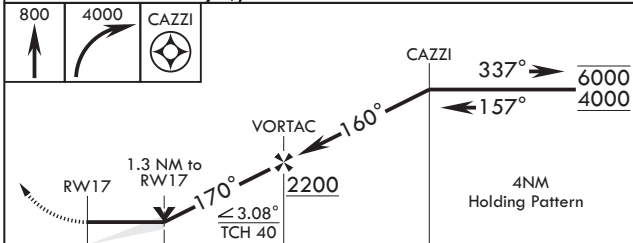
YUMA MCAS YUMA INTL (KNYL)

RNP APCH MISSED APPROACH: Climb to 800 then, climbing right turn to 4000 direct CAZZI and hold. Continue climb in hold to 4000.

ATIS★	APP CON	TOWER★	GND CON	CLNC DEL	ASR/PAR
118.8 273.5	124.7 371.975	119.3 (CTAF) 0 377.075	121.9 314.0	118.0 336.4	



EMERG SAFE ALT 100 NM 17,100



CATEGORY	A		B		C		D	
LNAV MDA	640-1	443	(500-1)	640-1½	443	(500-1½)	800-2	587 (600-2)
◻ CIRCLING	680-1	467 (500-1)	700-1	800-1½	587 (600-1½)	800-2	587 (600-2)	

REIL Rwy 3L, 3R, 21L, 35
HIRL Rwy 8-26, 17-35
HIRL Rwy 3L-21R, 3R-21L

YUMA, ARIZONA

32°39'N - 114°36'W

YUMA MCAS YUMA INTL (KNYL)

Amdt 5 22APR21

RNAV (GPS) RWY 17

SW-4, 28 NOV 2024 to 26 DEC 2024

SW-4, 28 NOV 2024 to 26 DEC 2024