

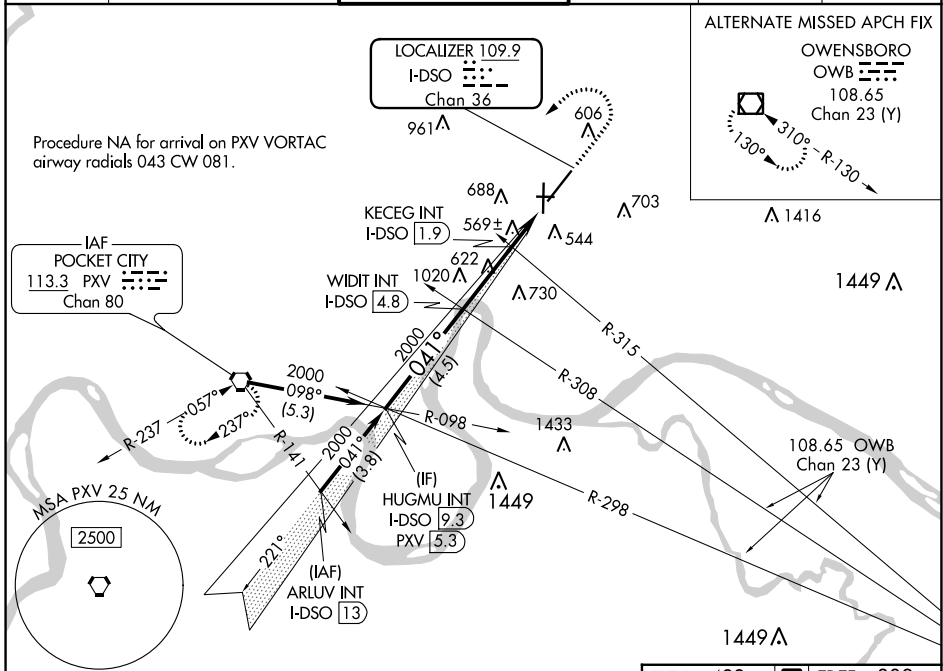
LOC/DME I-DSO 109.9 Chan 36	APP CRS 041°	Rwy Idg TDZE Apt Elev	8021 389 422
---	------------------------	-----------------------------	---

ILS or LOC RWY 4

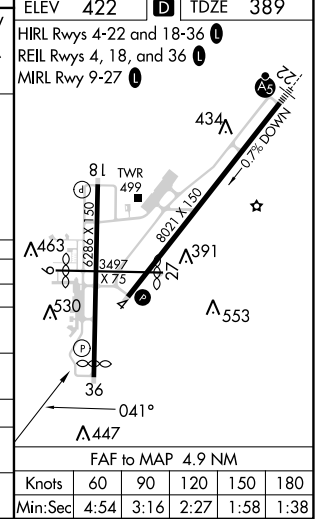
EVANSVILLE RGNL (EVV)

ASR Circling Rwy 9 NA at night. MISSED APPROACH: Climb to 1500 then climbing left turn to 2500 direct PXV VORTAC and hold.

ATIS 120.2	EVANSVILLE APP CON * 124.025 290.9	EVANSVILLE TOWER * 118.7 (CTAF) 257.8	GND CON 121.9	CLNC DEL 126.6	UNICOM 122.95
----------------------	--	---	-------------------------	--------------------------	-------------------------



	HUGMU INT I-DSO [9.3]	WIDIT INT I-DSO [4.8]	KECEG INT I-DSO [1.9]	I-DSO DME ANTENNA I-DSO [0.2]
	2000	2000	2000	1500
	GS 3.00° TCH 49	041°	*1180	PXV
	4.5 NM	2.8 NM	0.9 NM	1.2 NM
CATEGORY	A	B	C	D
S-ILS 4		589-3/4	200 (200-3/4)	
S-LOC 4	1180-1 791 (800-1)	1180-1 1/4 791 (800-1 1/4)	1180-2 1/2	791 (800-2 1/2)
C CIRCLING	1180-1 758 (800-1)	1180-1 1/4 758 (800-1 1/4)	1180-2 1/2	758 (800-2 1/2)
KECEG FIX MINIMUMS (DUAL VOR RECEIVERS OR DME REQUIRED)				
S-LOC 4	820-1	431 (400-1)	820-1 1/4	431 (400-1 1/4)
C CIRCLING	920-1 498 (500-1)	1040-1 618 (700-1)	1040-1 1/4 618 (700-1 1/4)	1040-2 618 (700-2)



EC-2, 28 NOV 2024 to 26 DEC 2024

EC-2, 28 NOV 2024 to 26 DEC 2024