

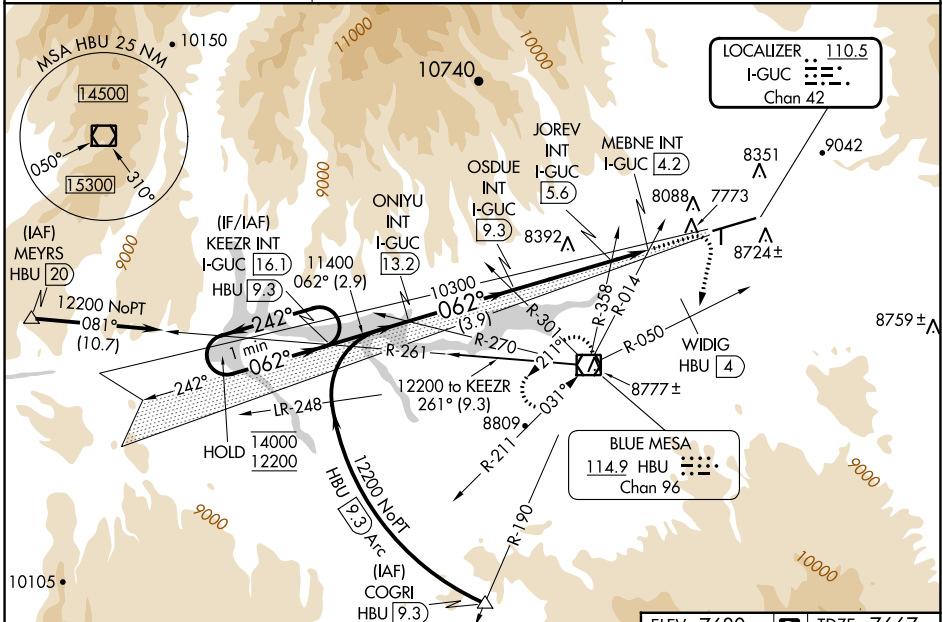
LOC/DME I-GUC <b>110.5</b> Chan 42	APP CRS <b>062°</b>	Rwy Idg TDZE Apt Elev <b>9400</b> <b>7667</b> <b>7680</b>
--	------------------------	--

# ILS or LOC RWY 6

GUNNISON-CRESTED BUTTE RGNL (GUC)

DME required.	MALSF	MISSED APPROACH: Climb to 10000 then climbing right turn to 12000 on heading 180° and HBU VOR/DME R-050 to WIDIG/HBU 4. DME continue on HBU VOR/DME R-050 to HBU VOR/DME and hold.
<p>▼ Rwy 6 helicopter visibility reduction below 3/4 SM NA. Inop table does not apply. Procedure NA when airport closed except by prior arrangement.</p> <p>⚠ -26°C Circling NA to Rwy's 17 and 35.</p>		

AWOS-3PT <b>135.075</b>	DENVER CENTER <b>124.5 350.25</b>	UNICOM <b>122.7 (CTAF)</b>
----------------------------	--------------------------------------	-------------------------------



One Minute Holding Pattern	KEEZR INT I-GUC 16.1	10000	12000	HBU R-050	WIDIG HBU 4	HBU R-050	HBU
	ONIYU INT I-GUC 13.2	↑	hdg 180°				
<p>14000 ← 242°</p> <p>12200 062° →</p> <p>GS 3.20° TCH 49</p>	<p>14000</p> <p>11400</p> <p>10300</p> <p>9020</p>	<p>2.9 NM</p> <p>3.9 NM</p> <p>3.7 NM</p> <p>1.4 NM</p> <p>2.4 NM</p>	<p>10300</p> <p>10300</p> <p>10300</p> <p>10300</p>	<p>OSDUE INT I-GUC 9.3</p> <p>JOREV INT I-GUC 5.6</p> <p>MEBNE INT I-GUC 4.2</p>	<p>062°</p> <p>0.3% UP</p> <p>9400 X 150</p>		
CATEGORY	A	B	C	D			
S-ILS 6	8698-3 1031 (1100-3)			NA			
S-LOC 6	9020-3 1353 (1400-3)						
CIRCLING	9260-3	1580 (1600-3)	9540-3 1860 (1900-3)	10040-3 2360 (2400-3)			
JOREV FIX MINIMUMS							
S-LOC 6	8640-3 973 (1000-3)						
CIRCLING	9260-3	1580 (1600-3)	9540-3 1860 (1900-3)	10040-3 2360 (2400-3)			

ELEV 7680	TDZE 7667				
<p>HIRL Rwy 6-24</p> <p>REIL Rwy 24</p> <p>FAF to MAP 5.1 NM</p>					
Knots	60	90	120	150	180
Min:Sec	5:06	3:24	2:33	2:02	1:42

SW-1, 28 NOV 2024 to 26 DEC 2024

SW-1, 28 NOV 2024 to 26 DEC 2024