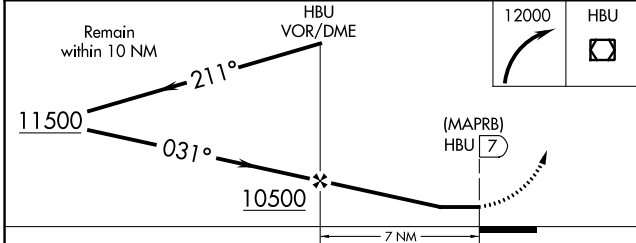
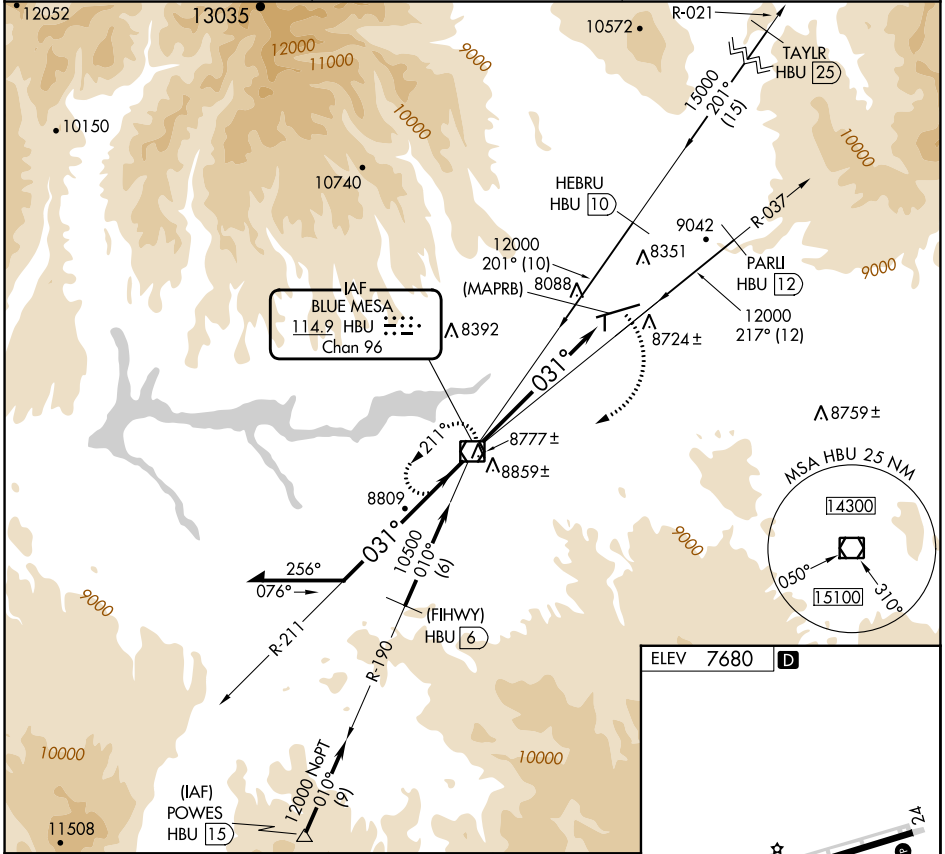


VOR/DME HBU 114.9 Chan 96	APP CRS 031°	Rwy Idg TDZE Apt Elev 7680	N/A N/A 7680
---	------------------------	---	---------------------------

VOR or GPS-A
GUNNISON-CRESTED BUTTE RGNL (GUC)

Procedure NA when airport closed except by prior arrangement.
 Circling NA to Rws 17 and 35.
 MISSED APPROACH: Climbing right turn to 12000 direct HBU VOR/DME and hold.

AWOS-3PT 135.075	DENVER CENTER 124.5 350.25	UNICOM 122.7 (CTAF)
----------------------------	--------------------------------------	-------------------------------



ELEV 7680

HIRL Rwy 6-24
REIL Rwy 24

		FAF to MAP 7 NM								
CATEGORY	A	B	C	D						
					Knots	60	90	120	150	180
CIRCLING	9260-2 1580 (1600-2)	9340-2 1660 (1700-2)	9540-3 1860 (1900-3)	10040-3 2360 (2400-3)	Min:Sec	7:00	4:40	3:30	2:48	2:20

SW-1, 28 NOV 2024 to 26 DEC 2024

SW-1, 28 NOV 2024 to 26 DEC 2024