

LOC/DME I-MPV 108.7 Chan 24	APP CRS 168°	Rwy Idg TDZE Apt Elev	5000 1135 1166
--	------------------------	-----------------------------	---

ILS or LOC RWY 17

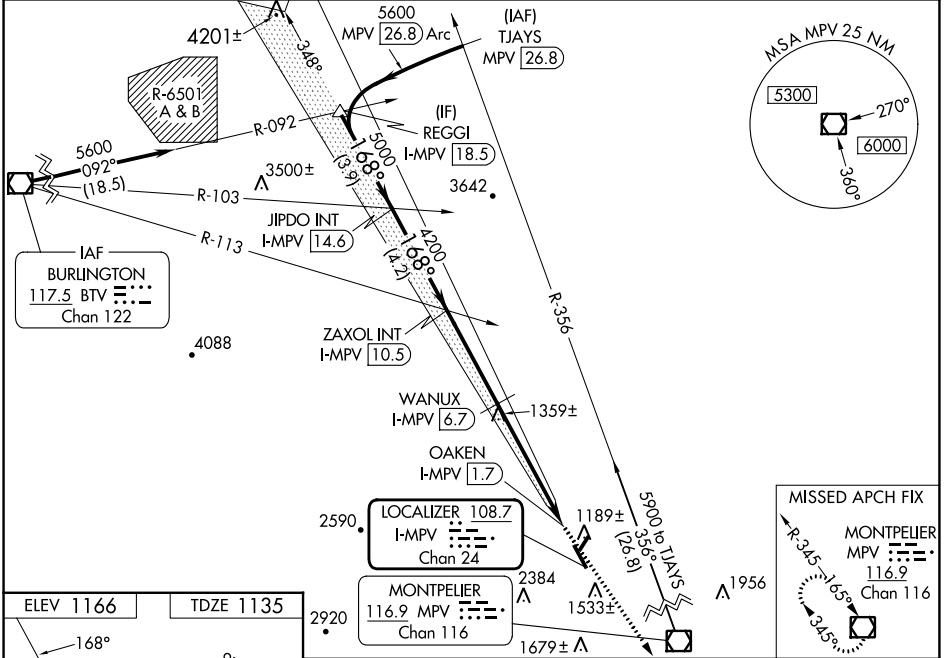
EDWARD F KNAPP STATE (MPV)

⚠ Inoperative table does not apply to S-LOC 17 Cats A and B. When local altimeter setting not received, procedure NA. Rwy 17 helicopter visibility reduction below ¼ SM
⚠ NA. Circling Rwy 5, 35 NA at night. For inoperative MALSRL, increase S-ILS 17 all Cats visibility to 1 ½ mile and WANUX fix minimums S-LOC 17 Cats A/B visibility to 1 mile and Cats C/D visibility to 1 ½ mile.

MALSRL

MISSED APPROACH: Climb to 5200 direct MPV VOR/DME and hold, continue climb-hold to 5200.

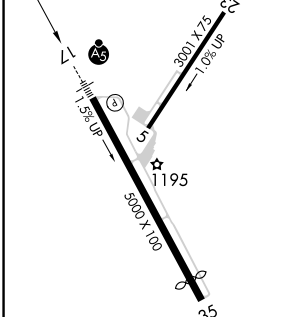
ASOS 132.675	BOSTON CENTER 135.7 282.2	UNICOM 122.8 (CTAF)
-------------------------------	--	--------------------------------------



NE-1, 28 NOV 2024 to 26 DEC 2024

NE-1, 28 NOV 2024 to 26 DEC 2024

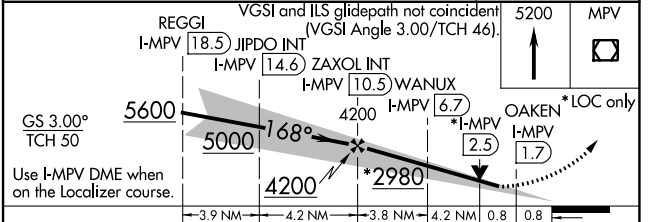
ELEV 1166	TDZE 1135
-----------	-----------



REIL Rwy 35
MIRL Rwy 5-23
MIRL Rwy 17-35

FAF to MAP 8.8 NM

Knots	60	90	120	150	180
Min:Sec	8:48	5:52	4:24	3:31	2:56



CATEGORY	A	B	C	D
S-ILS 17	1486-¾ 351 (400-¾)			
S-LOC 17	2980-1¼ 1845 (1900-1¼)	2980-1½ 1845 (1900-1½)	2980-3	1845 (1900-3)
C CIRCLING	2980-1¼ 1814 (1900-1¼)	2980-1½ 1814 (1900-1½)	2980-3	1814 (1900-3)
WANUX FIX MINIMUMS				
S-LOC 17	1660-¾	525 (500-¾)	1660-1¼	525 (500-1¼)
C CIRCLING	1980-1¼	814 (900-1¼)	2700-3 1534 (1600-3)	2920-3 1754 (1800-3)