

ILS or LOC RWY 6

COEUR D'ALENE/PAPPY BOYINGTON FLD (COE)

LOC I-COE 110.7	APP CRS 051°	Rwy Idg 7400
		TDZE 2291
		Apt Elev 2320

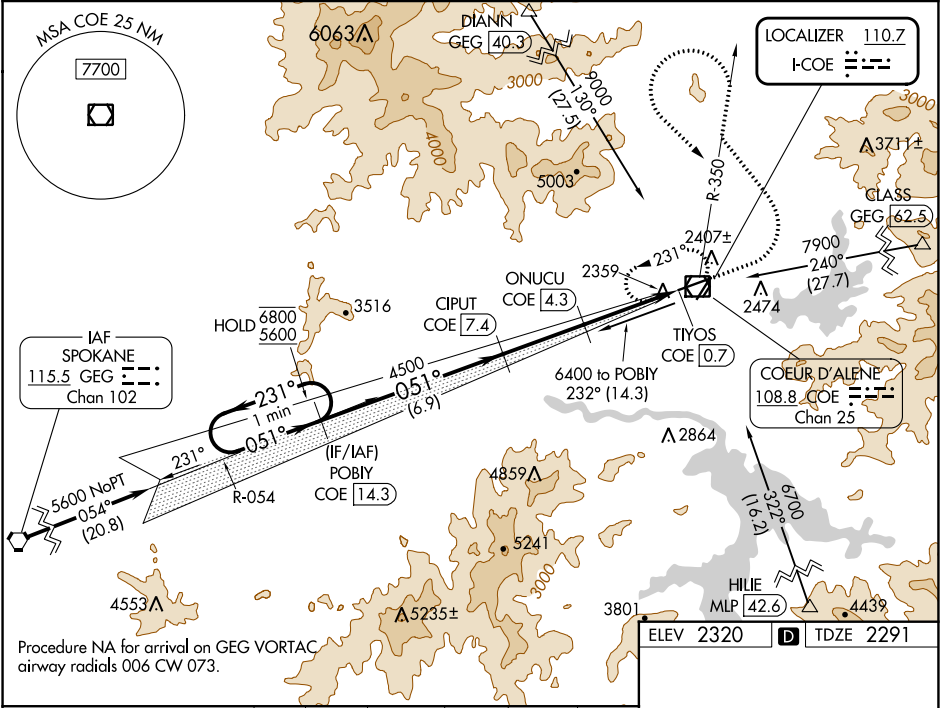
DME required.

⚠ Circling Rwy 2 NA at night. Autopilot coupled approach NA below 2840. Simultaneous reception of I-COE localizer and COE DME required. Circling NA for Cat D southeast of Rwy 6-24.

MALSR

MISSED APPROACH: Climb to 2900 then climbing left turn to 6000 on COE R-350 outbound then climbing left turn to 6500 on COE R-350 inbound to COE VOR/DME and hold.

AWOS-3PT 135.075	SPOKANE APP CON 132.1 263.0	UNICOM 122.8 (CTAF)
----------------------------	---------------------------------------	-------------------------------



Use COE DME when on the localizer course.

One Minute Holding Pattern

6800 ← 231°
5600 → 051°

GS 3.00°
TCH 56

POBIY COE 14.3

CIPUT COE 7.4

ONUCU COE 4.3

TIYOS COE 0.7

2900 ↑

6000 ↖

COE R-350 outbnd

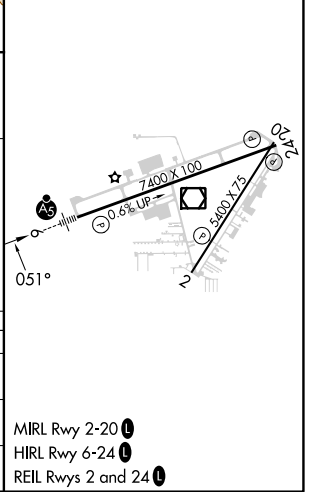
6500 ↗

COE R-350 inbnd

COE

6.9 NM | 3.1 NM | 3.6 NM

ELEV 2320	D	TDZE 2291
-----------	----------	-----------



CATEGORY	A	B	C	D
S-ILS 6	2491-1/2 200 (200-1/2)			
S-LOC 6	2860-1/2	569 (600-1/2)	2860-1 569 (600-1)	2860-1 1/4 569 (600-1 1/4)
CIRCLING	2860-1 540 (600-1)	2880-1 560 (600-1)	3020-2 700 (700-2)	3180-2 3/4 860 (900-2 3/4)

ILS or LOC RWY 6

NW-1, 28 NOV 2024 to 26 DEC 2024

NW-1, 28 NOV 2024 to 26 DEC 2024