


WAAS CH 70608 W06A	APP CRS 051°	Rwy Idg 7400 TDZE 2291 Apt Elev 2320
--	------------------------	---

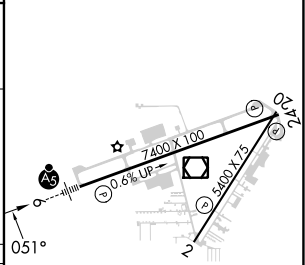
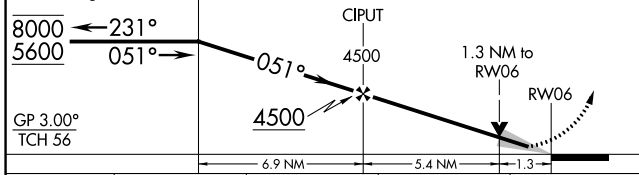
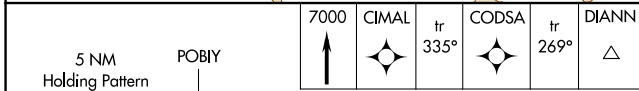
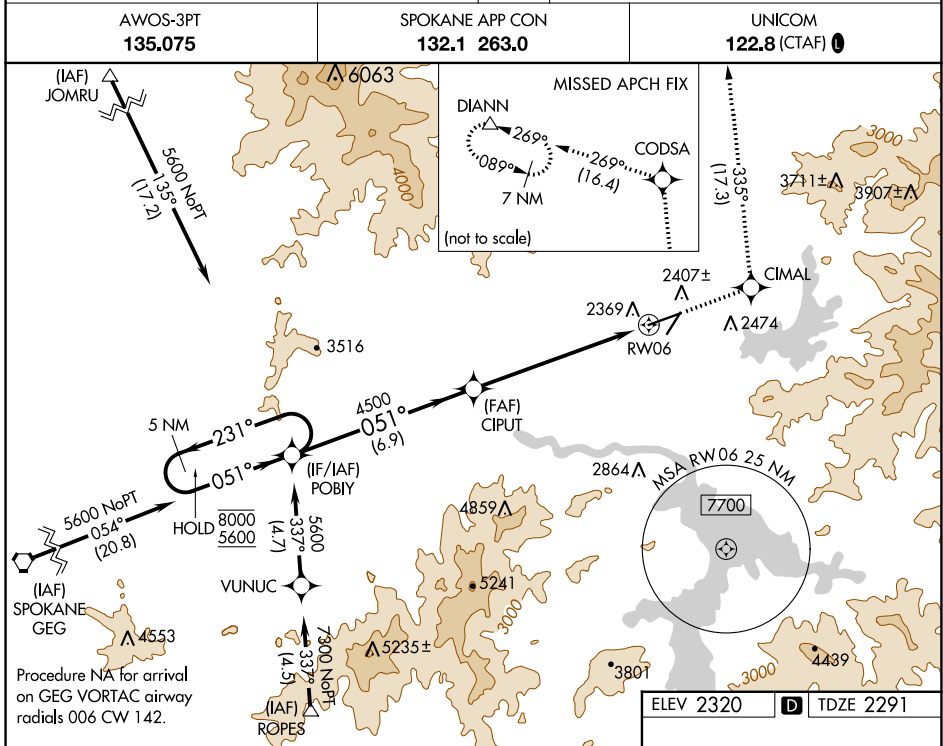
RNAV (GPS) RWY 6

COEUR D'ALENE/PAPPY BOYINGTON FLD (COE)

RNP APCH - GPS.

MAJRS  MISSED APPROACH: Climb to 7000 direct CIMAL and on track 335° to CODSA and on track 269° to DIANN and hold.

AWOS-3PT 135.075 | **SPOKANE APP CON 132.1 263.0** | **UNICOM 122.8 (CTAF)**



CATEGORY	A	B	C	D
LPV DA		2491-½	200 (200-½)	
LNAV/VNAV DA		2654-¾	363 (400-¾)	
LNAV MDA	2740-½	449 (500-½)	2740-1	449 (500-1)
CIRCLING	2740-1 420 (500-1)	2880-1 560 (600-1)	3020-2 700 (700-2)	3180-2¾ 860 (900-2¾)

MIRL Rwy 2-20 **1**
 HIRL Rwy 6-24 **1**
 REIL Rwy 2 and 24 **1**

NW-1, 28 NOV 2024 to 26 DEC 2024

NW-1, 28 NOV 2024 to 26 DEC 2024