

LOC/DME I- <b>EAR</b> <b>110.9</b> Chan <b>46</b>	APP CRS <b>002°</b>	Rwy Idg <b>7094</b> TDZE <b>2132</b> Apt Elev <b>2132</b>
---	------------------------	--

# ILS or LOC RWY 36

KEARNEY RGNL (EAR)

DME required.

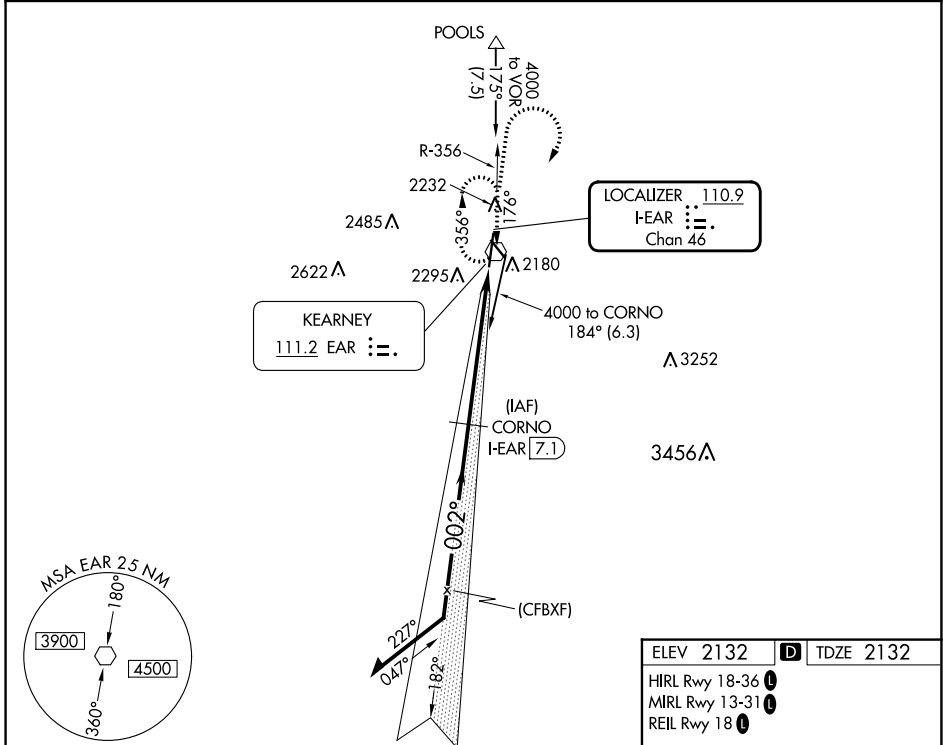
**NA**

MALSR



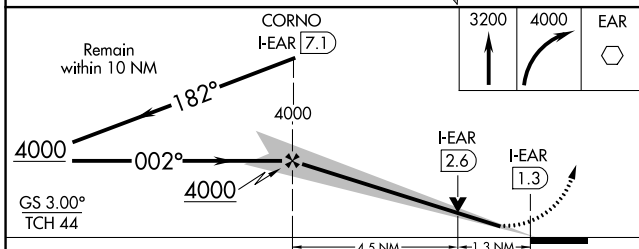
MISSED APPROACH: Climb to 3200 then climbing right turn to 4000 direct EAR VOR and hold, continue climb-in-hold to 4000.

AWOS-3PT <b>123.875</b>	MINNEAPOLIS CENTER <b>119.4 278.8</b>	UNICOM <b>123.0 (CTAF) 1</b>
----------------------------	--	---------------------------------

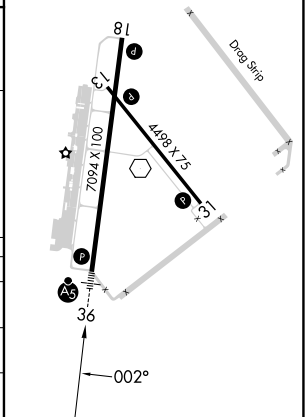


NC-2, 28 NOV 2024 to 26 DEC 2024

NC-2, 28 NOV 2024 to 26 DEC 2024



ELEV 2132	D	TDZE 2132
HIRL Rwy 18-36 1		
MIRL Rwy 13-31 1		
REIL Rwy 18 1		



CATEGORY	A	B	C	D
S-ILS 36	2332-½ 200 (200-½)			
S-LOC 36	2580-½ 448 (500-½)	2580-¾ 448 (500-¾)		
<b>C</b> CIRCLING	2600-1 468 (500-1)	2640-1½ 508 (600-1½)	2840-2¼ 708 (800-2¼)	