

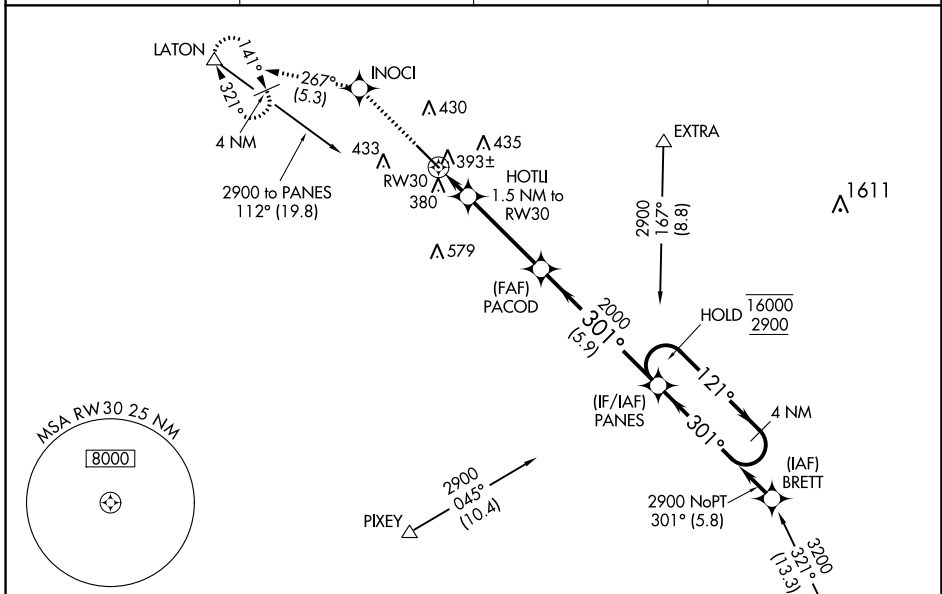
WAAS CH <b>77623</b> <b>W30A</b>	APP CRS <b>301°</b>	Rwy Idg TDZE Apt Elev	<b>5635</b> <b>295</b> <b>295</b>
--	------------------------	-----------------------------	---

# RNAV (GPS) RWY 30

VISALIA MUNI (VIS)

RNP APCH.	MALSR	MISSED APPROACH: Climb to 3000 direct INOCI and on track 267° to LATON and hold, continue climb-in-hold to 3000.
<p><b>⚠</b> For uncompensated Baro-VNAV systems, LNAV/VNAV NA below -15°C or above 54°C. For inop ALS, increase LNAV/VNAV all Cats visibility to ¾ SM, LNAV Cats C/D to 1 SM.</p>		

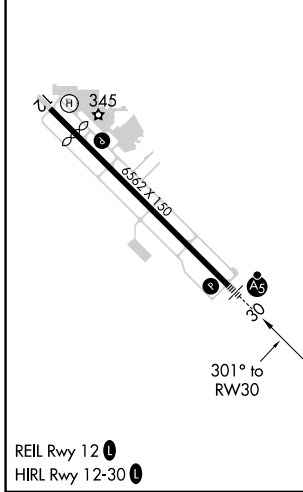
AWOS-3PT <b>119.925</b>	FRESNO APP CON <b>118.5</b>	CLNC DEL <b>118.5</b>	UNICOM <b>123.05 (CTAF)</b>
----------------------------	--------------------------------	--------------------------	--------------------------------



SW-2, 28 NOV 2024 to 26 DEC 2024

SW-2, 28 NOV 2024 to 26 DEC 2024

ELEV 295	<b>D</b>	TDZE 295
----------	----------	----------



3000	INOCI	LATON	PANES	4 NM Holding Pattern
↑	✧	tr 267°		
*LNAV only.		HOTLI 1.5 NM to RW30	2000	121° → 16000 ← 301° 2900
	RW30	*1 NM to RW30	820*	GP 3.00° TCH 53
	1 NM	0.5 NM	3.7 NM	5.9 NM
CATEGORY	A	B	C	D
LPV DA		502-½	207 (300-½)	
LNAV/VNAV DA		554-½	259 (300-½)	
LNAV MDA	660-½	365 (400-½)	660-⅝	365 (400-⅝)
<b>C</b> CIRCLING	720-1 425 (500-1)	760-1 465 (500-1)	760-1½ 465 (500-1½)	940-2 645 (700-2)