

CAMP SPRINGS, MARYLAND

# ILS RWY 19R (CAT II & III)

JOINT BASE ANDREWS (KADW)

LOC I-MXK <b>111.5</b>	APCH CRS <b>190°</b>	Rwy Idg TDZE Arprt Elev	<b>9318</b> <b>274</b> <b>280</b>
---------------------------	-------------------------	-------------------------------	---

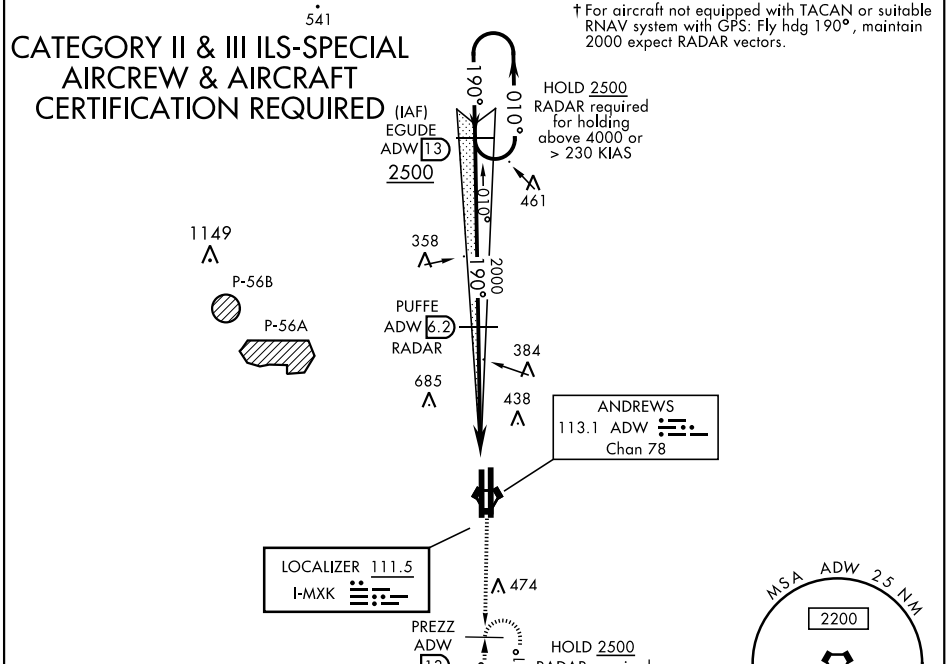
AL-561 [USAF]

RADAR or DME required.



† MISSED APPROACH: Climbing to 2500, intercept ADW VORTAC R-191 to PREZZ and hold.

ATIS <b>133.675 251.05</b>	POTOMAC APP CON <b>128.0 335.5</b>	<b>TOWER</b> <b>118.4 349.0</b>	GND CON <b>121.8 275.8</b>	CLNC DEL <b>127.55 285.475</b>	CPDLC
-------------------------------	---------------------------------------	------------------------------------	-------------------------------	-----------------------------------	-------

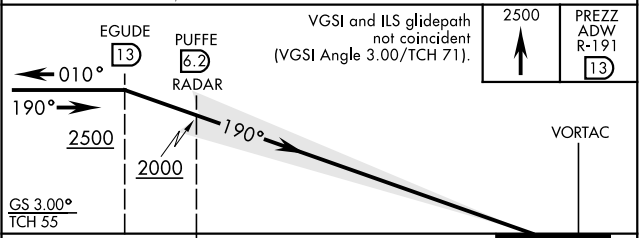
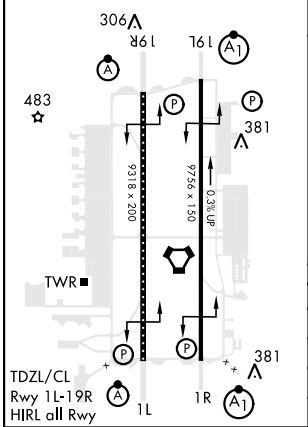


NE-3, 28 NOV 2024 to 26 DEC 2024

NE-3, 28 NOV 2024 to 26 DEC 2024

EMERG SAFE ALT 100 NM 6200

ELEV 280	TDZE 274
----------	----------



CATEGORY	A	B	C	D	E
S-ILS 19R	CAT II	RA 99/12	100	DA 374	
S-ILS 19R		CAT IIIa	RVR 07		
S-ILS 19R		CAT IIIb	RVR 06		
S-ILS 19R		CAT IIIc	NA		

CAMP SPRINGS, MARYLAND

38° 49' N-76° 52' W

JOINT BASE ANDREWS (KADW)

Orig 06OCT22

# ILS RWY 19R (CAT II & III)