

CAMP SPRINGS, MARYLAND

ILS RWY 1L (CAT II & III)

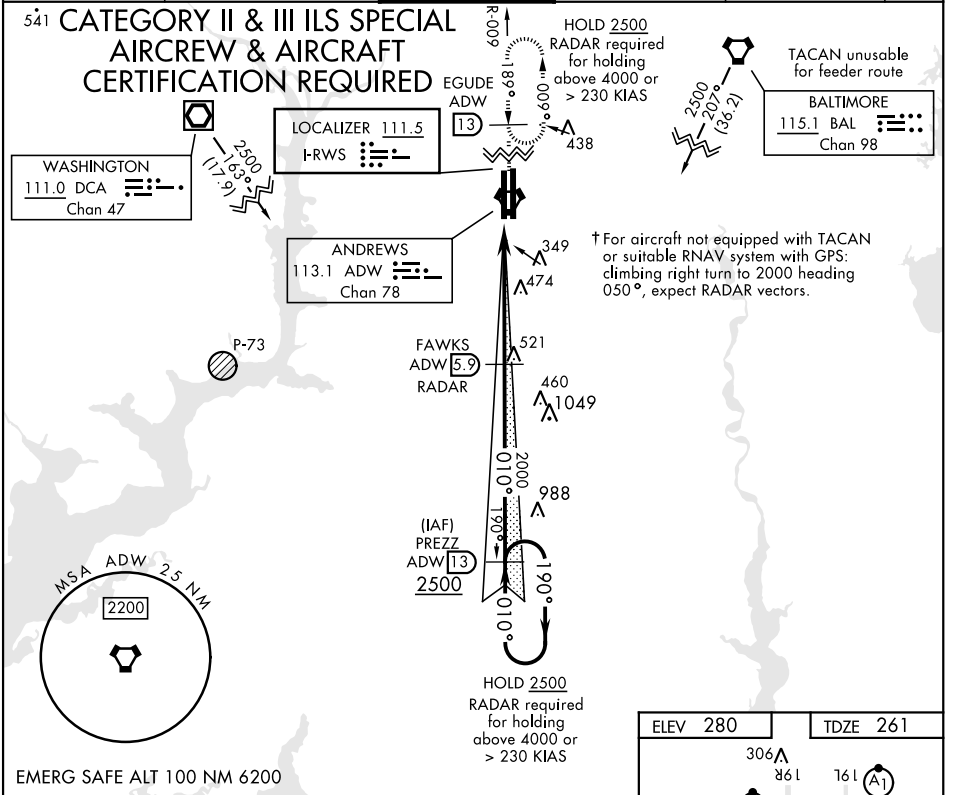
LOC I-RWS 111.5	APCH CRS 010°	Rwy ldg TDZE Arprt Elev 9318 261 280	AL-561 [USAF]	JOINT BASE ANDREWS (KADW)
---------------------------	-------------------------	--	---------------	---------------------------

RADAR or DME required.

ALSf-2

† MISSED APPROACH: Climbing to 2500, intercept ADW VORTAC R-009 to EGUDE and hold.

ATIS 133.675 251.05	POTOMAC APP CON 128.0 335.5	TOWER 118.4 349.0	GND CON 121.8 275.8	CLNC DEL 127.55 285.475	CPDLC
-------------------------------	---------------------------------------	-----------------------------	-------------------------------	-----------------------------------	-------

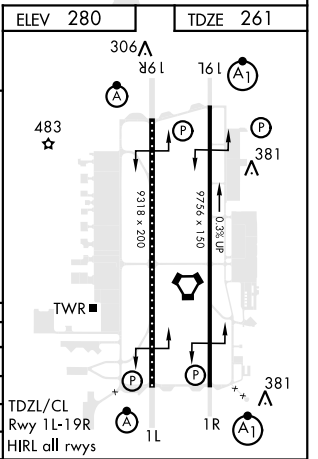


EMERG SAFE ALT 100 NM 6200

2500	EGUDE ADW R-009	VGSI and descent angle not coincident (VGSI Angle 3.00/TCH 72).	FAWKES 5.9 RADAR	PREZZ 13
------	-----------------	---	------------------	----------

VORTAC	GS 3.00° TCH 55
--------	-----------------

CATEGORY	A	B	C	D	E
S-ILS 1L	CAT II RA 108/12		100	DA 361	
S-ILS 1L	CAT IIIa		RVR 07		
S-ILS 1L	CAT IIIb		RVR 06		
S-ILS 1L	CAT IIIc		NA		



CAMP SPRINGS, MARYLAND

38°49'N-76°52'W

JOINT BASE ANDREWS (KADW)

Orig 06OCT22

ILS RWY 1L (CAT II & III)

NE-3, 28 NOV 2024 to 26 DEC 2024

NE-3, 28 NOV 2024 to 26 DEC 2024