

CAMP SPRINGS, MARYLAND

ILS or LOC RWY 19R

LOC I-MXK 111.5	APCH CRS 190°	Rwy Idg TDZE Arpt Elev 9318 274 280
---------------------------	-------------------------	---

AL-561 (USAF)

JOINT BASE ANDREWS (KADW)

RADAR or DME required.

▼ * When ALS inop, increase RVR to 40, vis to 3/4 mile. When TDZL/CL inop, increase RVR to 24.
** When ALS inop, increase CAT AB RVR to 55, vis to 1 mile, CAT CDE RVR to 60, vis to 1 1/8 miles.

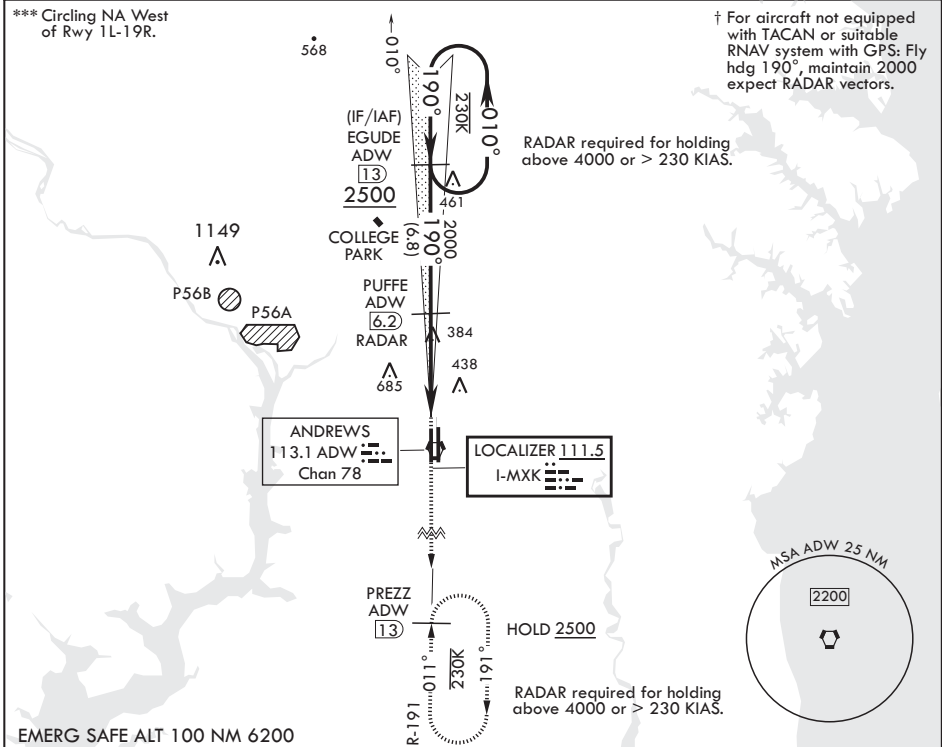


† MISSED APPROACH: Climb to 2500, intercept ADW VORTAC R-191 to PREZZ and hold.

ATIS 133.675 251.05	POTOMAC APP CON 128.0 335.5	TOWER 118.4 349.0	GND CON 121.8 275.8	CLNC DEL 127.55 285.475	CPDLC
-------------------------------	---------------------------------------	-----------------------------	-------------------------------	-----------------------------------	-------

*** Circling NA West of Rwy 1L-19R.

† For aircraft not equipped with TACAN or suitable RNAV system with GPS: Fly hdg 190°, maintain 2000 expect RADAR vectors.



NE-3, 28 NOV 2024 to 26 DEC 2024

NE-3, 28 NOV 2024 to 26 DEC 2024

<p>EGUDE 13 2500</p> <p>190°</p> <p>VGSI and ILS glidepath not coincident (VGSI Angle 3.00/TCH 71).</p> <p>GS 3.00° TCH 55</p> <p>2000</p> <p>PUFFE 6.2 RADAR</p> <p>2.1</p> <p>BARLE 1.5</p> <p>VORTAC</p> <p>4.7 NM</p> <p>0.5</p>		<p>2500 ADW R-191</p> <p>PREZZ ADW 13</p>	ELEV 280	TDZE 274	
CATEGORY	A	B	C	D	E
S-ILS 19R*	474/18		200	(200-½)	
S-LOC 19R**	660/24	386 (400-½)	660/35	386	(400-¾)
☐ CIRCLING***	780-1 500 (500-1)		780-1½ 500 (500-1½)	840-2 560 (600-2)	
HIRL all Rwys TDZL/CL Rwys 1L, 19R					
FAF to MAP 4.7 NM					
Knots	60	90	120	150	180
Min:Sec	4:42	3:08	2:21	1:53	1:34

CAMP SPRINGS, MARYLAND

38°49'N - 76°52'W

JOINT BASE ANDREWS (KADW)

Amdt 4 06OCT22

ILS or LOC RWY 19R