

CAMP SPRINGS, MARYLAND

ILS or LOC RWY 1L

LOC I-RWS 111.5	APCH CRS 010°	Rwy Idg 9318
		TDZE 261
		Arprt Elev 280

AL-561 (USAF)

JOINT BASE ANDREWS (KADW)

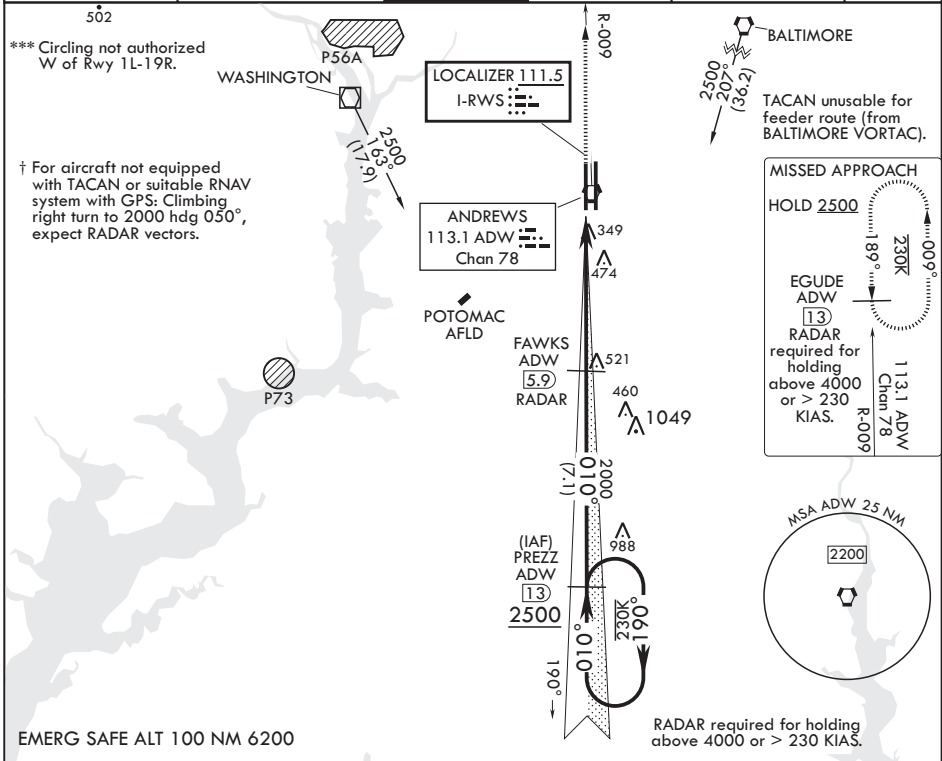
RADAR or DME required.

⚠ * When ALS inop increase RVR to 40, vis to 3/4 mile. When TDZL/CL inop, increase RVR to 24.
 ** When ALS inop, increase CAT AB RVR to 55, vis to 1 mile, CAT CDE RVR to 60, vis to 1 1/8 miles.

ALS-F-2

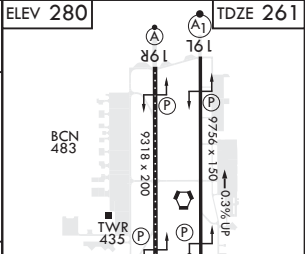
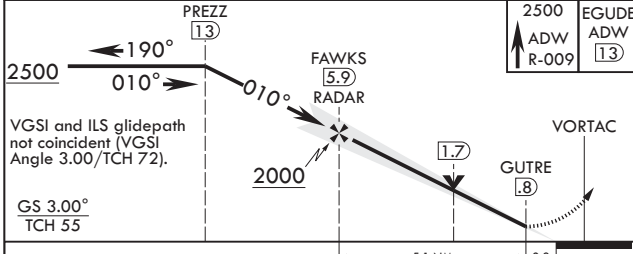
† MISSED APPROACH: Climbing to 2500, intercept ADW VORTAC R-009 to EGUDE and hold.

ATIS 133.675 251.05	POTOMAC APP CON 128.0 335.5	TOWER 118.4 349.0	GND CON 121.8 275.8	CLNC DEL 127.55 285.475	CPDLC
-------------------------------	---------------------------------------	-----------------------------	-------------------------------	-----------------------------------	-------



NE-3, 28 NOV 2024 to 26 DEC 2024

NE-3, 28 NOV 2024 to 26 DEC 2024



CATEGORY	A	B	C	D	E
S-ILS 1L*	461/18		200	(200-½)	
S-LOC 1L**	680/24	419 (400-½)	680/40	419	(400-¾)
ⓐ CIRCLING***	780-1	500 (500-1)	780-1½ 500 (500-1½)	840-2	560 (600-2)

HIREL all Rwsy TDZL/CL Rwsy 1L, 19R 010°					
FAF to MAP 5.1 NM					
Knots	60	90	120	150	180
Min:Sec	5:06	3:24	2:33	2:02	1:42

CAMP SPRINGS, MARYLAND

38°49'N - 76°52'W

JOINT BASE ANDREWS (KADW)

Amdt 7 06OCT22

ILS or LOC RWY 1L