

CAMP SPRINGS, MARYLAND

# ILS or LOC RWY 1R

LOC I-VJM <b>110.5</b>	APCH CRS <b>010°</b>	Rwy Idg <b>9756</b>	TDZE <b>265</b>	Arprt Elev <b>280</b>
---------------------------	-------------------------	------------------------	--------------------	--------------------------

AL-561 (USAF)

JOINT BASE ANDREWS (KADW)

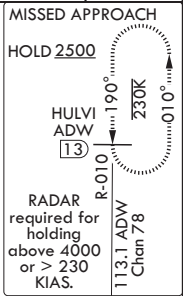
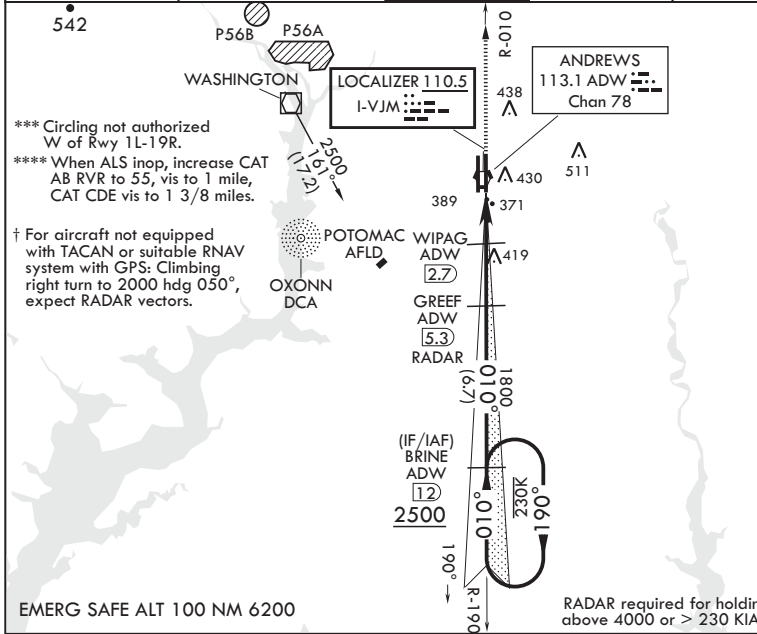
RADAR required  
RADAR or DME required at FAF.



† MISSED APPROACH. Climb to 2500 via ADW VORTAC R-010 to HULVI/ADW 13 DME and hold.

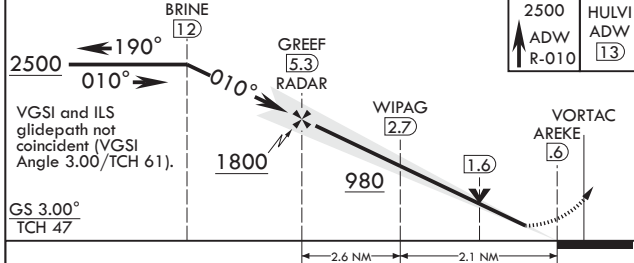
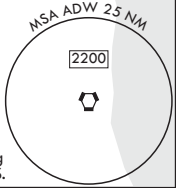
▼ \* When ALS inop, increase RVR to 40, vis to 3/4 mile. RVR 18 authorized with use of Flight Director System or Autopilot System or Heads-Up-Display to DA.  
\*\* When ALS inop, increase RVR to 35, vis to 1 mile.

ATIS <b>133.675 251.05</b>	POTOMAC APP CON <b>128.0 335.5</b>	TOWER <b>118.4 349.0</b>	GND CON <b>121.8 275.8</b>	CLNC DEL <b>127.55 285.475</b>	CPDLC
-------------------------------	---------------------------------------	-----------------------------	-------------------------------	-----------------------------------	-------



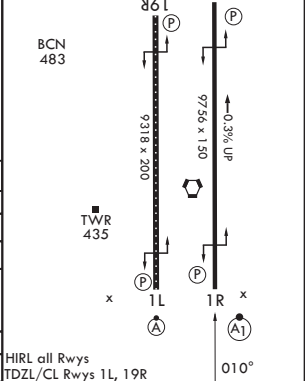
\*\*\* Circling not authorized W of Rwy 1L-19R.  
\*\*\*\* When ALS inop, increase CAT AB RVR to 55, vis to 1 mile, CAT CDE vis to 1 3/8 miles.

† For aircraft not equipped with TACAN or suitable RNAV system with GPS: Climbing right turn to 2000 hdg 050°, expect RADAR vectors.



ELEV <b>280</b>	HULVI ADW <b>13</b>	TDZE <b>265</b>
-----------------	---------------------	-----------------

CATEGORY	A	B	C	D	E
S-ILS 1R*	465/24 200 (200-½)				
S-LOC 1R**	640/24 375 (400-½)		640/35 375 (400-¾)		
CIRCLING***	780-1 500 (500-1)		780-1½ 500 (500-1½)		840-2 560 (600-2)
NON-DME					
S-LOC 1R****	720/24 455 (500-½)		720/45 455 (500-¾)		
CIRCLING***	780-1 500 (500-1)		780-1½ 500 (500-1½)		840-2 560 (600-2)



FAF to MAP 4.7 NM					
Knots	60	90	120	150	180
Min:Sec	4:42	3:08	2:21	1:53	1:34

CAMP SPRINGS, MARYLAND

38°49'N - 76°52'W

JOINT BASE ANDREWS (KADW)

Amdt 1 18MAY23

# ILS or LOC RWY 1R

NE-3, 28 NOV 2024 to 26 DEC 2024

NE-3, 28 NOV 2024 to 26 DEC 2024