

JEFSN TWO DEPARTURE (RNAV) (JEFSN2.JEFSN)

JOINT BASE ANDREWS (KADW)

CAMP SPRINGS, MARYLAND

ATIS 133.675 251.05
 CPDLC
 GND CON
 121.8 275.8
 ANDREWS TOWER
 118.4 349.0
 POTOMAC DEP CON
 118.95 254.35

RNAV1-GPS
 RADAR required

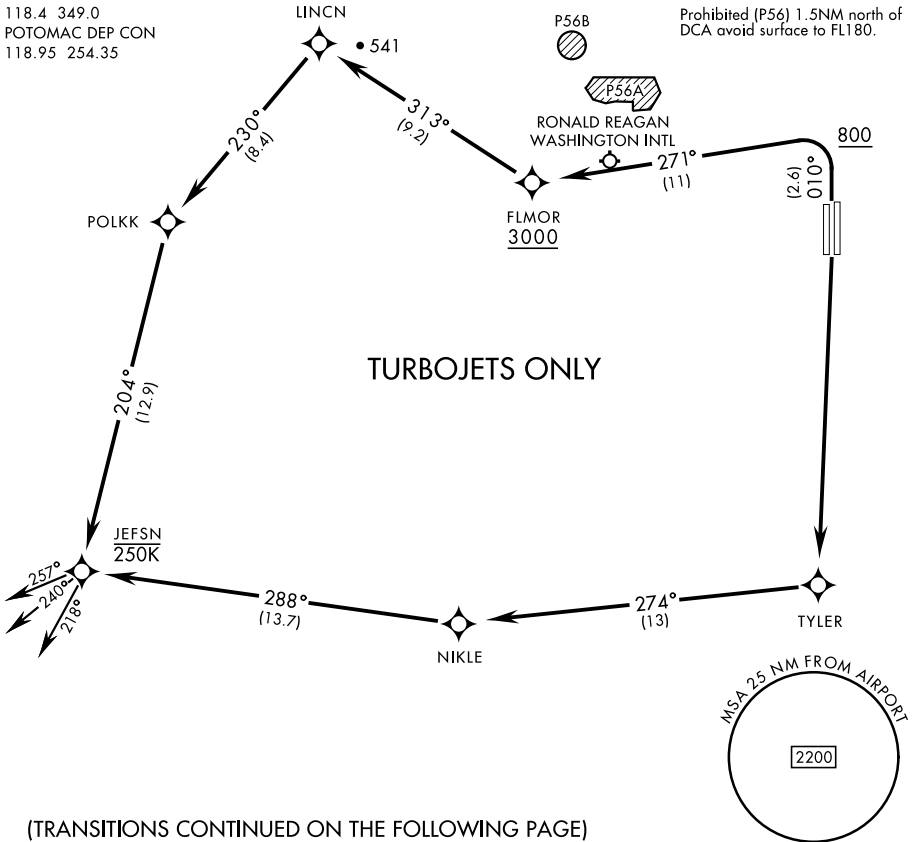
[USAF]

TOP ALTITUDE:
3000

(Page 1 of 2)

Max 250 KIAS until JEFSN

Prohibited (P56) 1.5NM north of DCA avoid surface to FL180.



NE-3, 28 NOV 2024 to 26 DEC 2024

NE-3, 28 NOV 2024 to 26 DEC 2024

(TRANSITIONS CONTINUED ON THE FOLLOWING PAGE)



DEPARTURE ROUTE DESCRIPTION

TAKEOFF RWY 1L/R: Climb on heading 010° to 800, then climbing left turn to 3000 direct FLMOR. Then via depicted route to JEFSN, thence...

TAKEOFF RWY 19L/R: Climb direct TYLER then via depicted route to JEFSN, thence...

... on assigned transition. Maintain 3000, expect further clearance to filed alt within ten (10) minutes after departure.

- FLASK TRANSITION (JEFSN2.FLASK)
- GLANC TRANSITION (JEFSN2.GLANC)
- MAULS TRANSITION (JEFSN2.MAULS)
- MELTN TRANSITION (JEFSN2.MELTN)
- RRSIN TRANSITION (JEFSN2.RRSIN)