

CAMP SPRINGS, MARYLAND

RNAV (GPS) RWY 19R

WAAS CH 52204 W19B	APCH CRS 190°	Rwy ldg TDZE Arprt Elev	9318 274 280
--------------------------	------------------	-------------------------------	--------------------

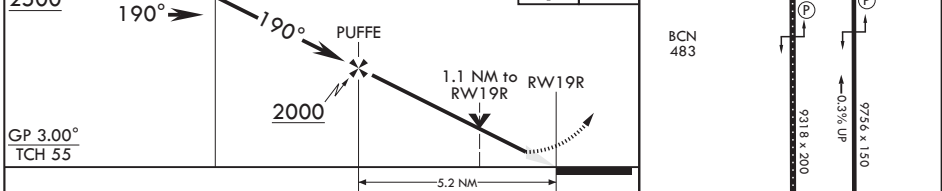
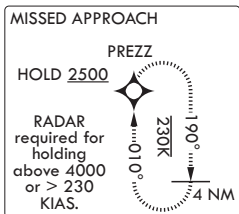
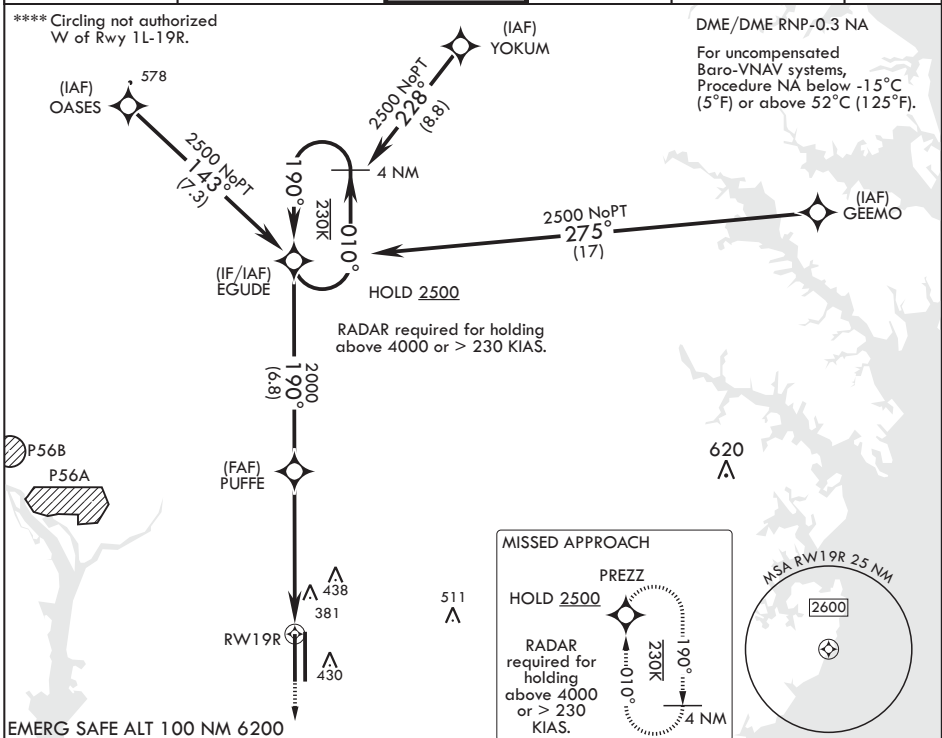
AL-561 (USAF)

JOINT BASE ANDREWS (KADW)

⚠ * When ALS inop, increase RVR to 40, vis to 3/4. When TDZ/CL lights inop, increase RVR to 24.
 ** When ALS inop, increase vis to 1 1/4 miles.
 *** When ALS inop, increase CAT AB RVR to 55, vis to 1 mile; CAT CDE vis to 1 1/4 miles.

ALSF-2 MISSED APPROACH: Climb to 2500 direct PREZZ and hold.

ATIS 133.675 251.05	POTOMAC APP CON 128.0 335.5	TOWER 118.4 349.0	GND CON 121.8 275.8	CLNC DEL 127.55 285.475	CPDLC
------------------------	--------------------------------	----------------------	------------------------	----------------------------	-------



CATEGORY	A	B	C	D	E
LPV DA*	474/18		200	(200-½)	
LNAV/VNAV DA**	697/40		423	(500-¾)	
LNAV MDA***	700/24	426 (500-½)	700/40	426	(500-¾)
C CIRCLING****	780-1	500 (500-1)	780-1½	500 (500-1½)	840-2 560 (600-2)

CAMP SPRINGS, MARYLAND 38°49'N - 76°52'W JOINT BASE ANDREWS (KADW)

RNAV (GPS) RWY 19R

Amdt 1 18MAY23

HIRL all Rwys
TDZL/CL Rwys 1L, 19R

NE-3, 28 NOV 2024 to 26 DEC 2024

NE-3, 28 NOV 2024 to 26 DEC 2024