

CAMP SPRINGS, MARYLAND

RNAV (RNP) Y RWY 01L

APCH CRS	Rwy Idg	9318
010°	TDZE	261
	Arprt Elev	280

AL-561 (USAF)

JOINT BASE ANDREWS (KADW)

RNP AR APCH. From SPISY, EDDGY; RF.

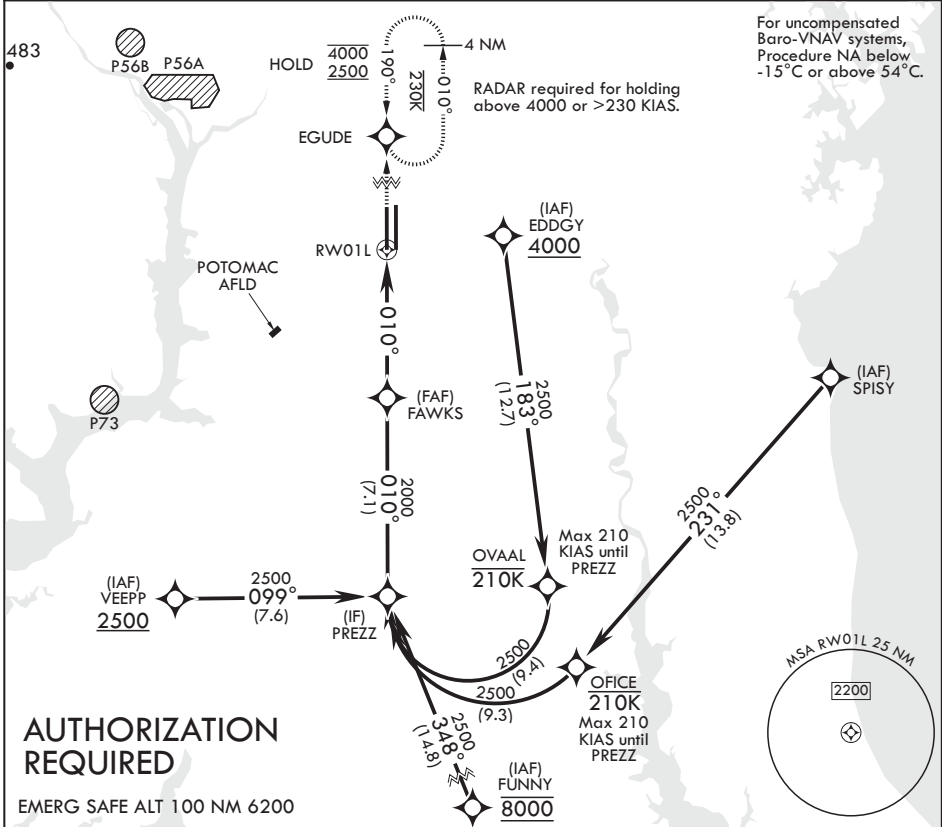
ALSF-2

MISSED APPROACH: Climb to 2500 on track 010° to EGUDE and hold.

* When ALS inop, increase RVR to 55, vis to 1 mile.
 ** When ALS inop, increase vis to 1 3/8 miles.



ATIS	POTOMAC APP CON	TOWER	GND CON	CLNC DEL	CPDLC
133.675 251.05	128.0 335.5	118.4 349.0	121.8 275.8	127.55 285.475	



NE-3, 28 NOV 2024 to 26 DEC 2024

NE-3, 28 NOV 2024 to 26 DEC 2024

2500 tr 010°	EGUDE	VGSI and RNAV glidepath not coincident (VGSI Angle 3.00/TCH 72).	PREZZ	ELEV 280	TDZE 261
CATEGORY	A	B	C	D	
RNP 0.15 DA*	641/35	380	(400-5%)		
RNP 0.30 DA**	717/45	456	(500-7%)		
HIRL all Rwys			TDZL/CL Rwys 1L, 19R		

CAMP SPRINGS, MARYLAND

38°49'N - 76°52'W

JOINT BASE ANDREWS (KADW)

Amdt 2 18MAY23
TERPS

RNAV (RNP) Y RWY 01L