

CAMP SPRINGS, MARYLAND

RNAV (GPS) Z RWY 1L

WAAS CH 52205 W01A	APCH CRS 010°	Rwy ldg TDZE 261 Arprt Elev 280
--------------------------	------------------	--

AL-561 (USAF)

JOINT BASE ANDREWS (KADW)

DME/DME RNP-0.3 NA

▼ * When ALS inop, increase RVR to 40, vis to ¾. When TDZ/CL lights inop, increase RVR to 24.
 ** When ALS inop increase vis to 1 1/4 miles.

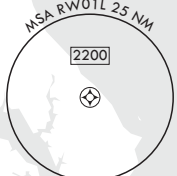
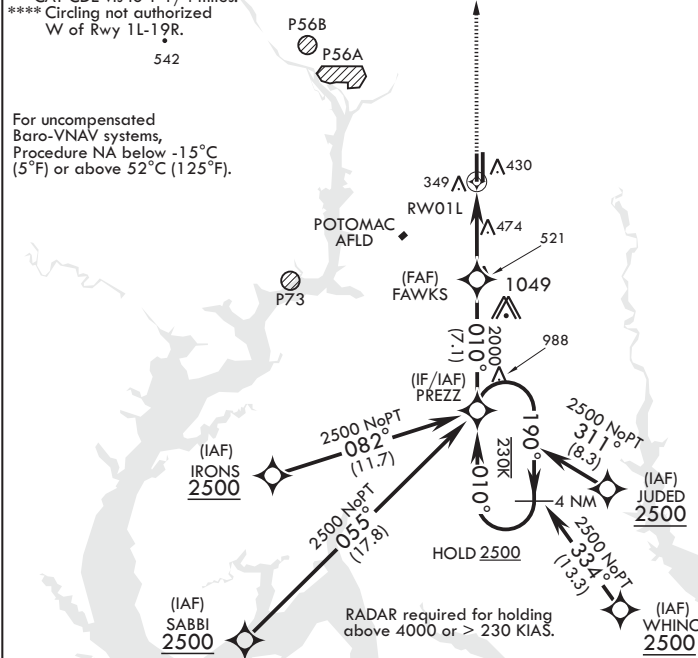
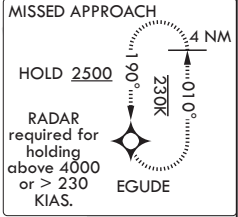


MISSED APPROACH: Climb to 2500 direct EGUDE and hold.

ATIS 133.675 251.05	POTOMAC APP CON 128.0 335.5	TOWER 118.4 349.0	GND CON 121.8 275.8	CLNC DEL 127.55 285.475	CPDLC
------------------------	--------------------------------	----------------------	------------------------	----------------------------	-------

*** When ALS inop increase CAT AB RVR to 55, vis to 1 mile; CAT CDE vis to 1 1/4 miles.
 **** Circling not authorized W of Rwy 1L-19R.

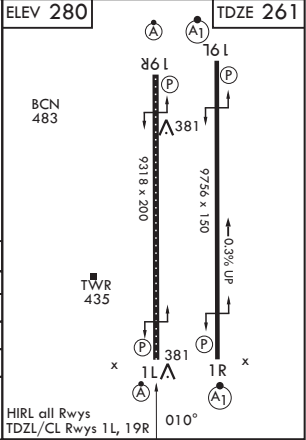
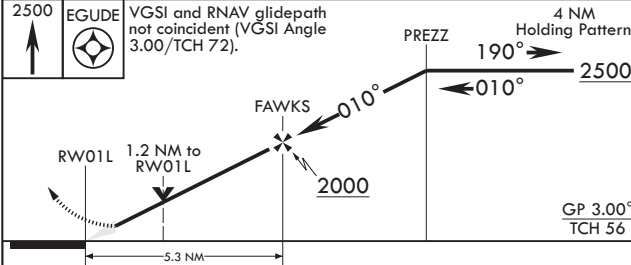
For uncompensated Baro-VNAV systems, Procedure NA below -15°C (5°F) or above 52°C (125°F).



NE-3, 28 NOV 2024 to 26 DEC 2024

NE-3, 28 NOV 2024 to 26 DEC 2024

EMERG SAFE ALT 100 NM 6200



CATEGORY	A	B	C	D	E
LPV DA*		461/18	200	(200-½)	
LNAV/VNAV DA**		687/40	426	(500-¾)	
LNAV MDA***	700/24	439 (500-½)	700/40	439 (500-¾)	
☐ CIRCLING****	780-1	500 (500-1)	780-1½ 500 (500-1½)	840-2	560 (600-2)

CAMP SPRINGS, MARYLAND

38°49'N - 76°52'W

JOINT BASE ANDREWS (KADW)

Amdt 5 18MAY23

RNAV (GPS) Z RWY 1L