

CAMP SPRINGS, MARYLAND

# TACAN RWY 19L

VORTAC ADW 113.1 Chan 78	APCH CRS 195°	Rwy Idg TDZE Arprt Elev	9756 279 280
--------------------------------	------------------	-------------------------------	--------------------

AL-561 (USAF)

JOINT BASE ANDREWS (KADW)

ATC RADAR required

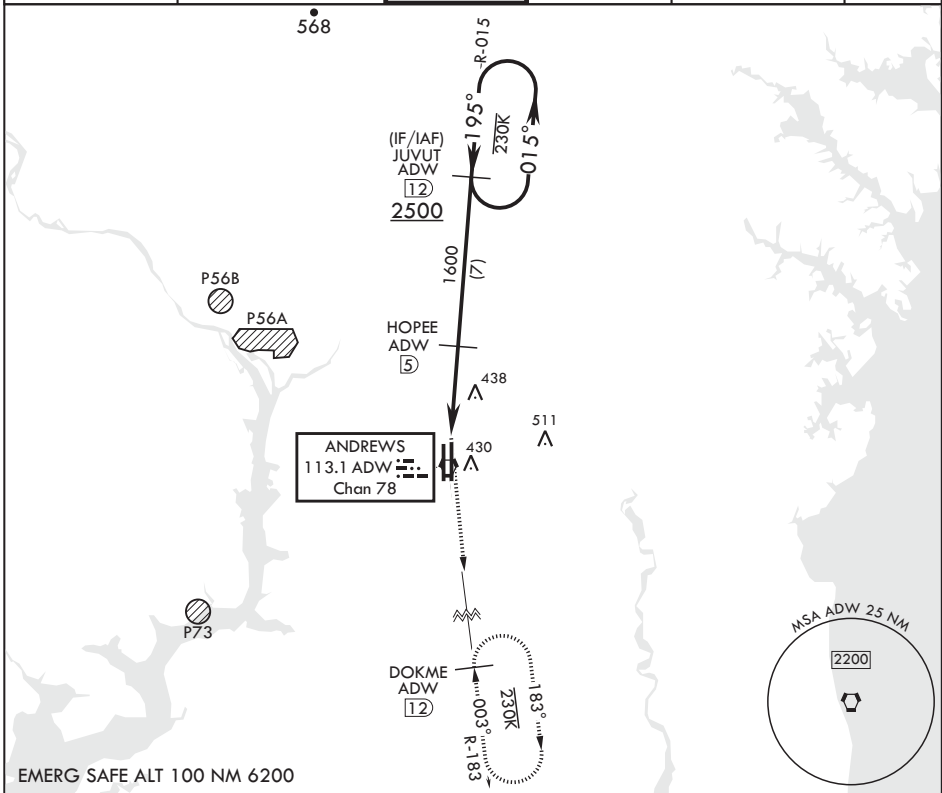
▲ \* When ALS inop, increase CAT AB RVR to 55, vis to 1 mile, CAT CDE vis to 1 3/8 miles.  
 \*\* Circling not authorized W of Rwy 1L-19R.

ALSF-1

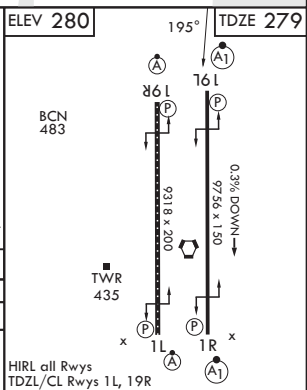
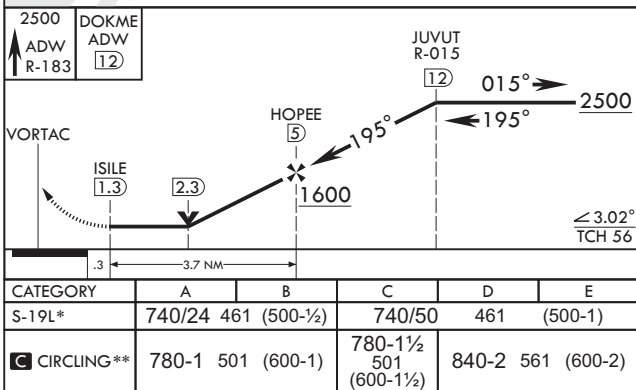


MISSED APPROACH: Climbing to 2500 via ADW VORTAC R-183 to DOKME and hold.

ATIS 133.675 251.05	POTOMAC APP CON 128.0 335.5	TOWER 118.4 349.0	GND CON 121.8 275.8	CLNC DEL 127.55 285.475	CPDLC
------------------------	--------------------------------	----------------------	------------------------	----------------------------	-------



EMERG SAFE ALT 100 NM 6200



CAMP SPRINGS, MARYLAND  
 Amdt 3 18MAY23

38°49'N - 76°52'W

JOINT BASE ANDREWS (KADW)

# TACAN RWY 19L

NE-3, 28 NOV 2024 to 26 DEC 2024

NE-3, 28 NOV 2024 to 26 DEC 2024