

CAMP SPRINGS, MARYLAND

# TACAN RWY 1L

VORTAC ADW 113.1 Chan 78	APCH CRS 021°	Rwy ldg TDZE Arprt Elev	9318 261 280
--------------------------------	------------------	-------------------------------	--------------------

AL-561 (USAF)

JOINT BASE ANDREWS (KADW)

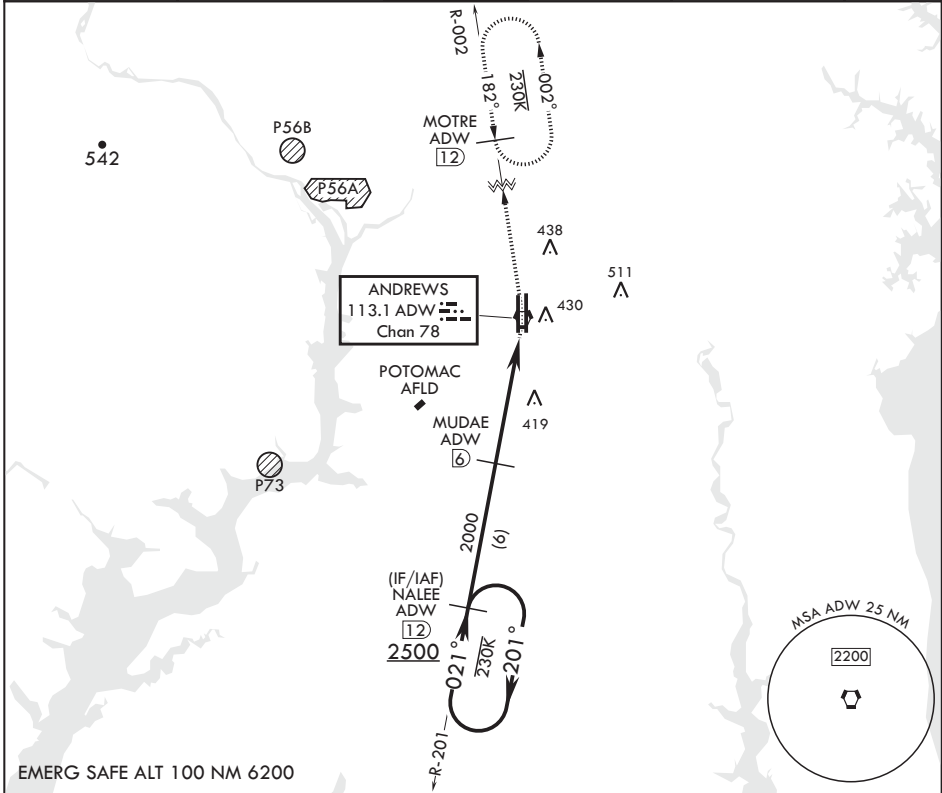
ATC RADAR required

\* When ALS inop, increase CAT AB RVR to 55, vis to 1 mile, CAT CDE vis to 1 3/8 miles.  
\*\* Circling not authorized W of Rwy 1L-19R.

ALSF-2

MISSED APPROACH: Climb to 2500 via ADW VORTAC R-002 to MOTRE/ADW 12 DME and hold.

ATIS 133.675 251.05	POTOMAC APP CON 128.0 335.5	TOWER 118.4 349.0	GND CON 121.8 275.8	CLNC DEL 127.55 285.475	CPDLC
------------------------	--------------------------------	----------------------	------------------------	----------------------------	-------



EMERG SAFE ALT 100 NM 6200

2500	← 201°	← 021°	← 021°	MUDAE	VORTAC	2500	MOTRE ADW 12	ELEV 280	TDZE 261	
2000								BCN 483	9318 x 200	
201									9756 x 130	
202									0.3% UP	
207										
261										
280										
2200										
CATEGORY		A	B	C	D	E				
S-1L*		720/24	459 (500-½)	720/45	459	(500-¾)				
CIRCLING**		780-1	501 (600-1)	780-1½	501 (600-1½)	840-2	561 (600-2)	HIRL all Rwys TDZL/CL Rwys 1L, 19R		

CAMP SPRINGS, MARYLAND

38°49'N - 76°52'W

JOINT BASE ANDREWS (KADW)

Amdt 2 18MAY23

# TACAN RWY 1L

NE-3, 28 NOV 2024 to 26 DEC 2024

NE-3, 28 NOV 2024 to 26 DEC 2024