

CAMP SPRINGS, MARYLAND

TACAN-B

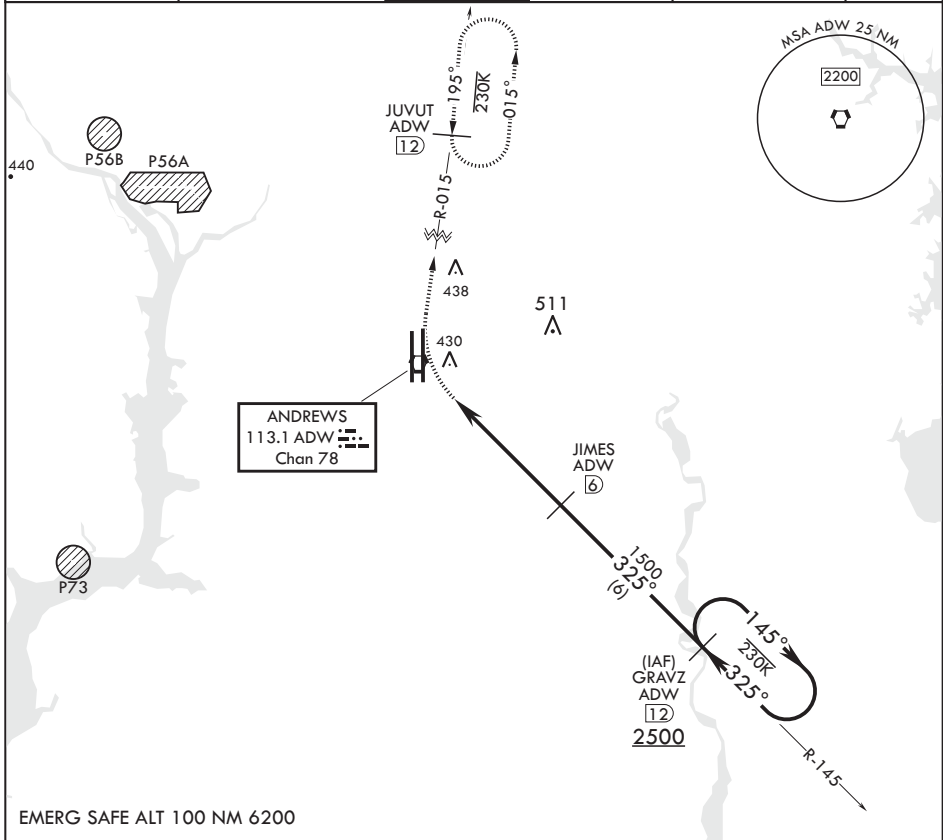
VORTAC ADW 113.1 Chan 78	APCH CRS 325°	Rwy ldg TDZE Arprt Elev	N/A N/A 280
--------------------------------	------------------	-------------------------------	-------------------

AL-561 (USAF)

JOINT BASE ANDREWS (KADW)

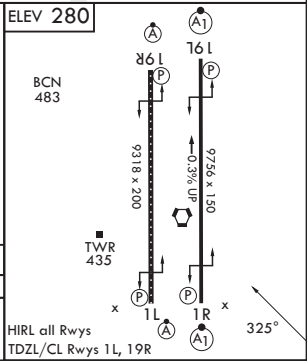
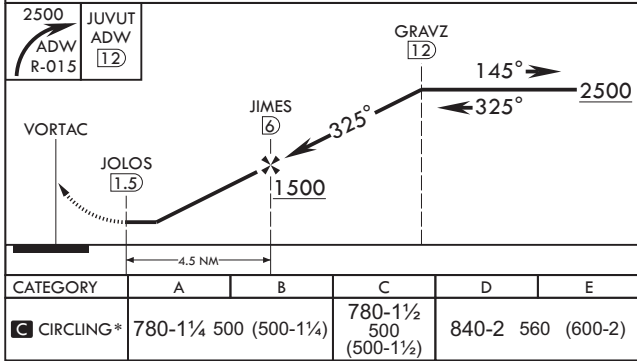
ATC RADAR required
 * Circling not authorized west of Rwy 1L-19R.
 MISSED APPROACH: Climbing right turn to 2500 via ADW R-015 to JUVUT and hold.

ATIS 133.675 251.05	POTOMAC APP CON 128.0 335.5	TOWER 118.4 349.0	GND CON 121.8 275.8	CLNC DEL 127.55 285.475	CPDLC
------------------------	--------------------------------	-----------------------------	------------------------	----------------------------	-------



NE-3, 28 NOV 2024 to 26 DEC 2024

NE-3, 28 NOV 2024 to 26 DEC 2024



CAMP SPRINGS, MARYLAND 38°49'N - 76°52'W JOINT BASE ANDREWS (KADW)

Amdt 4 18MAY23

TACAN-B