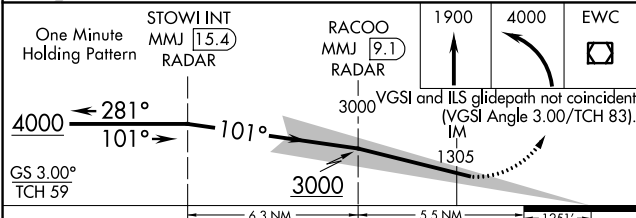
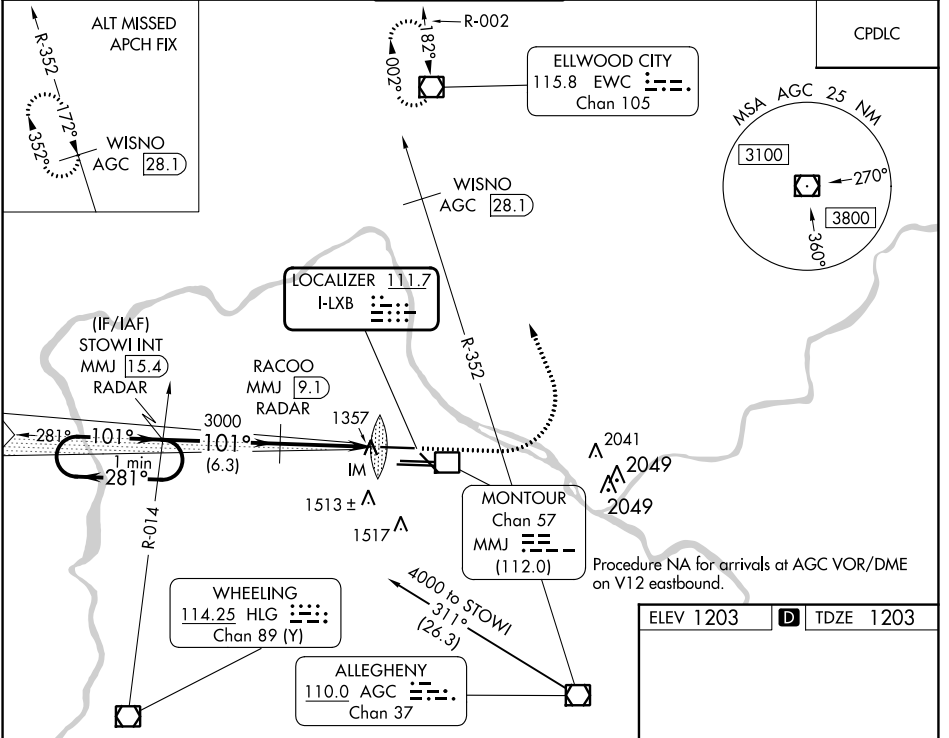


LOC I-LXB <b>111.7</b>	APP CRS <b>101°</b>	Rwy Idg <b>10502</b> TDZE <b>1203</b> Apt Elev <b>1203</b>
---------------------------	------------------------	--

# ILS RWY 10L (CAT II & III)

PITTSBURGH INTL (PIT)

<b>Simultaneous approach authorized. DME or RADAR required. CAT II: RVR 1000 authorized with specific OPSPEC, MSPEC, or LOA approval and use of autoland or HUD to touchdown. DME from MMJ DME. Simultaneous reception of I-LXB and MMJ DME required.</b>			ALSF-2 	<b>MISSED APPROACH:</b> Climb to 1900 then climbing left turn to 4000 direct EWC VOR/DME and hold.
D-ATIS <b>ARR 127.25</b> <b>DEP 135.9</b>	<b>PITTSBURGH APP CON</b> <b>123.95 360.8</b>	<b>PITTSBURGH TOWER</b> <b>128.3 291.7</b>	<b>GND CON</b> SOUTH <b>121.9 348.6</b> NORTH <b>127.8 348.6</b>	<b>CLNC DEL</b> <b>126.75 353.7</b>



ELEV 1203	<b>D</b>	TDZE 1203
-----------	----------	-----------

REIL Rwy 10C  
HIREL all Rwsy  
TDZ/CL Rwsy 10L, 10R, 28L, 28R, 28C, and 32

CATEGORY	A	B	C	D
S-ILS 10L	CAT II RA NA/12 100 DA 1303			
S-ILS 10L	CAT III RVR 06			

## CATEGORY II & III ILS - SPECIAL AIRCREW & AIRCRAFT CERTIFICATION REQUIRED

NE-4, 28 NOV 2024 to 26 DEC 2024

NE-4, 28 NOV 2024 to 26 DEC 2024