

# RNAV (RNP) Z RWY 10R

PITTSBURGH INTL (PIT)

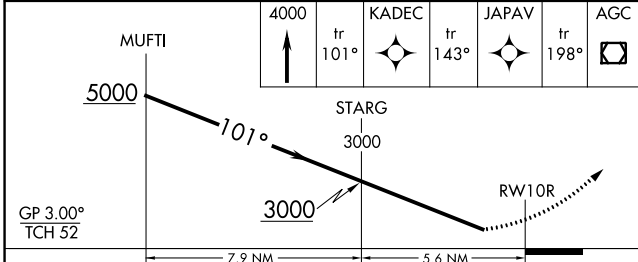
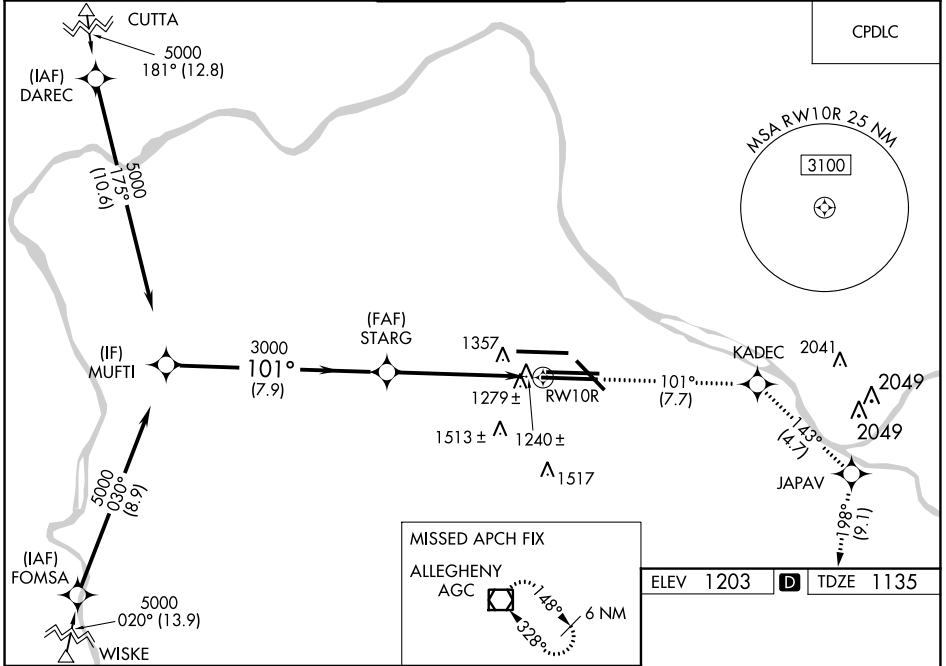
|             |          |              |
|-------------|----------|--------------|
| APP CRS     | Rwy Idg  | <b>11492</b> |
| <b>101°</b> | TDZE     | <b>1135</b>  |
|             | Apt Elev | <b>1203</b>  |

**RNP AR APCH.**

▼ For uncompensated Baro-VNAV systems, procedure NA below -17°C or above 46°C.  
 ▲ For inop ALS, increase RNP 0.14 all Cats visibility to RVR 6000, RNP 0.20 all Cats visibility to 1½ SM, RNP 0.30 all Cats visibility to 2½ SM. Simultaneous approach authorized with ILS or LOC Rwy 10L, ILS Rwy 10L (Cat III), ILS Rwy 10L (Cat III). Use of FD or AP providing RNAV track guidance required during simultaneous operations.

**MISSED APPROACH:**  
 Climb to 4000 on track 101° to KADEC and on track 143° to JAPAV and on track 198° to AGC VOR/DME and hold.

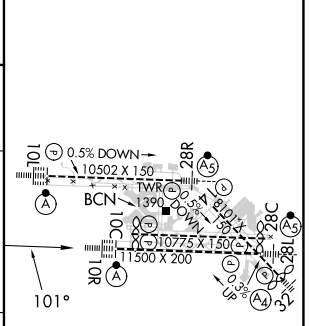
|                   |                     |                    |                          |                     |
|-------------------|---------------------|--------------------|--------------------------|---------------------|
| D-ATIS            | PITTSBURGH APP CON  | PITTSBURGH TOWER   | GND CON                  | CLNC DEL            |
| ARR <b>127.25</b> | <b>123.95 360.8</b> | <b>128.3 291.7</b> | SOUTH <b>121.9 348.6</b> | <b>126.75 353.7</b> |
| DEP <b>135.9</b>  |                     |                    | NORTH <b>127.8 348.6</b> |                     |



|           |          |           |
|-----------|----------|-----------|
| ELEV 1203 | <b>D</b> | TDZE 1135 |
|-----------|----------|-----------|

| CATEGORY    | A | B       | C            | D |
|-------------|---|---------|--------------|---|
| RNP 0.14 DA |   | 1511/40 | 376 (400-¾)  |   |
| RNP 0.20 DA |   | 1572/50 | 437 (400-1)  |   |
| RNP 0.30 DA |   | 1745-1¾ | 610 (600-1¾) |   |

## AUTHORIZATION REQUIRED



REIL Rwy 10C  
 HIRL all Rws  
 TDZ/CL Rws 10L, 10R, 28L, 28R, 28C, and 32

NE-4, 28 NOV 2024 to 26 DEC 2024

NE-4, 28 NOV 2024 to 26 DEC 2024