

WAAS CH 90126 W10A	APP CRS 101°	Rwy Idg TDZE Apt Elev	9708 1141 1203
--	------------------------	-----------------------------	---

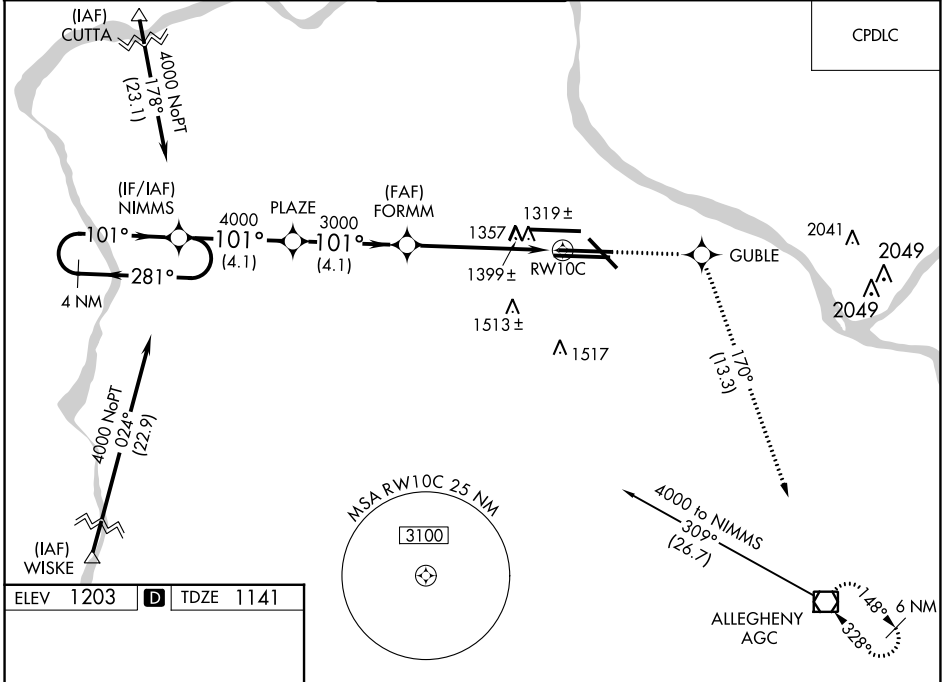
RNAV (GPS) Y RWY 10C

PITTSBURGH INTL (PIT')

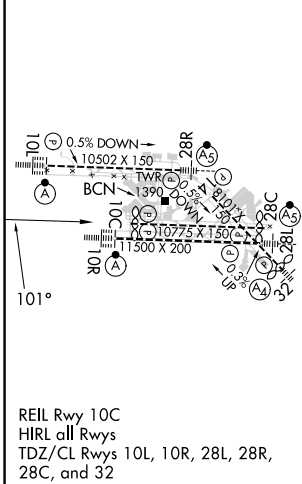
⚠ For uncompensated Baro-VNAV systems, LNAV/VNAV NA below -17°C (2°F) or above 54°C (130°F). DME/DME RNP-0.3 NA. Simultaneous approach authorized with ILS or LOC Rwy 10L, ILS Rwy 10L (Cat II), ILS Rwy 10L (Cat III). LNAV procedure NA during simultaneous operations. Use of FD or AP providing RNAV track guidance required during simultaneous operations.

MISSED APPROACH:
Climb to 4000 direct GUBLE and right turn on track 170° to AGC VOR/DME and hold.

D-ATIS ARR 127.25 DEP 135.9	PITTSBURGH APP CON 123.95 360.8	PITTSBURGH TOWER 128.3 291.7	GND CON SOUTH 121.9 348.6 NORTH 127.8 348.6	CLNC DEL 126.75 353.7
---	---	---	---	---------------------------------



ELEV 1203	D	TDZE 1141
-----------	----------	-----------



4 NM Holding Pattern	4000	GUBLE	AGC	
NIMMS	PLAZE	FORMM	*LNAV only	
4000 ← 281°	4000 → 101°	3000	*1.5 NM to RWY10C	
GP 3.00°	TCH 51	3000	RWY10C	
4.1 NM	4.1 NM	4.1 NM	1.5	
CATEGORY	A	B	C	D
LPV DA		1438/50	297 (300-1)	
LNAV/VNAV DA		1634-1¾	493 (500-1¾)	
LNAV MDA	1660/55	519 (500-1)	1660-1½ 519 (500-1½)	1660-1¾ 519 (500-1¾)
C CIRCLING	1700-1	497 (500-1)	1880-2 677 (700-2)	1880-2½ 677 (700-2½)

NE-4, 28 NOV 2024 to 26 DEC 2024

NE-4, 28 NOV 2024 to 26 DEC 2024