

DDANY THREE DEPARTURE (RNAV)

SE-3, 28 NOV 2024 to 26 DEC 2024

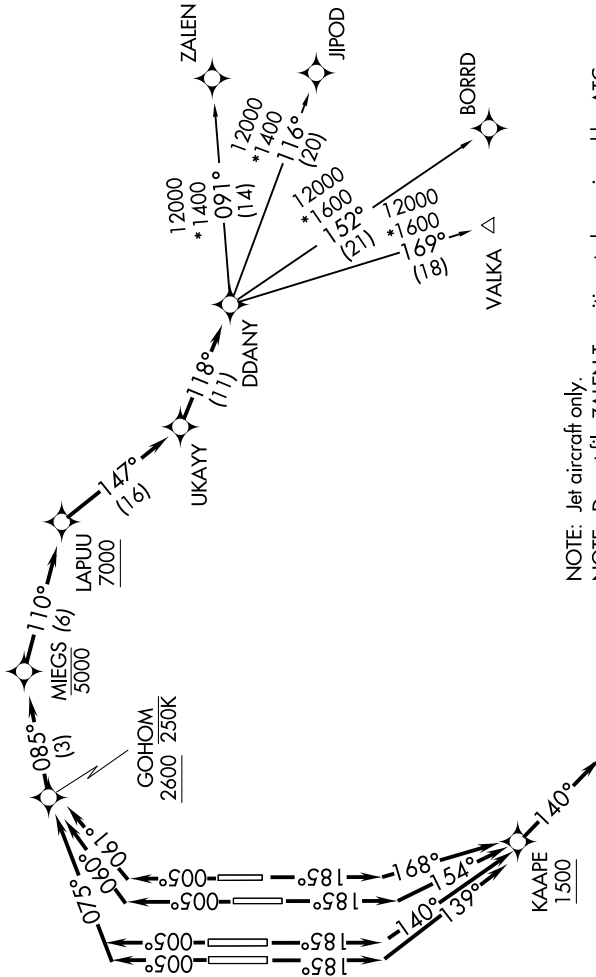
TOP ALTITUDE:
7000

RNAV 1 - DME/DME/IRU or GPS.
RADAR required.

TAKEOFF MINIMUMS

Rwys 17L/R, 18L/R, 35L/R, 36L/R: Standard
with minimum climb of 500' per NM to 600'.

D-ATIS DEP
120.525
CLNC DEL
134.7 341.7
CPDLC
GND CON
126.4 (East)
121.8 (West)
ORLANDO TOWER
118.45 253.5
(Rwys 17L-35R, 17R-35L)
124.3 253.5
(Rwys 18L-36R, 18R-36L)
ORLANDO DEP CON
124.8 307.0



NOTE: Jet aircraft only.
NOTE: Do not file ZALEN Transition- to be assigned by ATC.

(NARRATIVE ON FOLLOWING PAGE)

NOTE: Chart not to scale.