

LOC/DME I- <b>DDO</b> <b>110.5</b> Chan <b>42</b>	APP CRS <b>005°</b>	Rwy Idg <b>10000</b> TDZE <b>88</b> Apt Elev <b>96</b>
---	------------------------	--

# ILS RWY 35L (CAT II & III)

ORLANDO INTL (MCO)

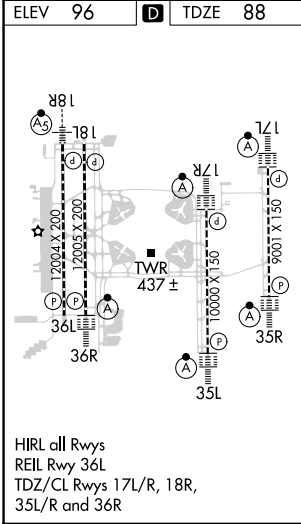
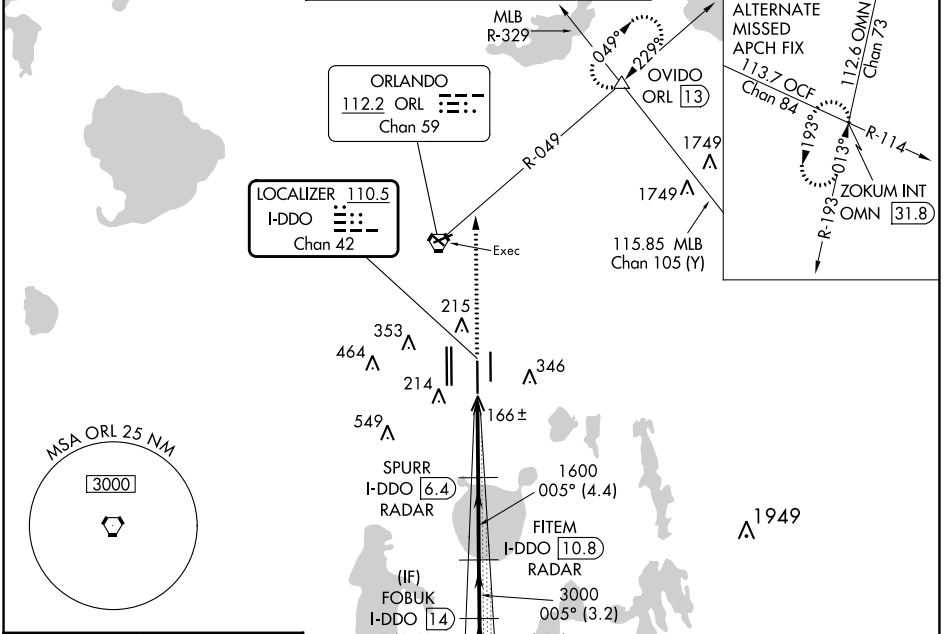
RADAR required for procedure entry. DME or RADAR required.

⚠ Bright lights on highway midway between Rwy 35L and Rwy 35R may be mistaken for runway lights. Simultaneous approach authorized. When using alternate missed approach, simultaneous approach NA.

ALSF-2

MISSED APPROACH: Climb to 3000 on heading 005° and ORL VORTAC R-049 to OVIDO INT/ORL 13 DME and hold.

D-ATIS ARR <b>121.25</b> DEF <b>120.525</b>	ORLANDO APP CON <b>124.8 307.0</b>	ORLANDO TOWER <b>118.45 253.5</b> (Rwys 17L-35R, 17R-35L) <b>124.3 253.5</b> (Rwys 18L-36R, 18R-36L)	GND CON <b>126.4</b> (East) <b>121.8</b> (West)	CLNC DEL <b>134.7</b> <b>341.7</b>	CPDLC
---	---------------------------------------	--	---	--	-------



3000 hdg 005° ORL R-049

OVIDO

VGSI and ILS glidepath not coincident (VGSI Angle 3.00/TCH 72).

NOGGI I-DDO 16.5 RADAR

FOBUK I-DDO 1.4 RADAR

5000

005°

SPURR I-DDO 6.4 RADAR

FITEM I-DDO 10.8 RADAR

1600

3000

4000

GS 3.00° TCH 57

1040'	4.6 NM	4.4 NM	3.2 NM	2.5 NM
-------	--------	--------	--------	--------

CATEGORY	A	B	C	D
S-ILS 35L		CAT II RA 106/12	100 DA 188	
S-ILS 35L		CAT III RVR 06		

**CATEGORY II & III ILS - SPECIAL AIRCREW & AIRCRAFT CERTIFICATION REQUIRED**

SE-3, 28 NOV 2024 to 26 DEC 2024

SE-3, 28 NOV 2024 to 26 DEC 2024