

LOC/DME I-CER 111.15 Chan 48 (Y)	APP CRS 005°	Rwy Idg 9000 TDZE 90 Apt Elev 96
--	------------------------	---

ILS RWY 35R (SA CAT I)

ORLANDO INTL (MCO)

From HAHNA: RNAV1- DME/DME/IRU or GPS required. Aircraft not DME/DME/IRU or GPS equipped-RADAR required for procedure entry.



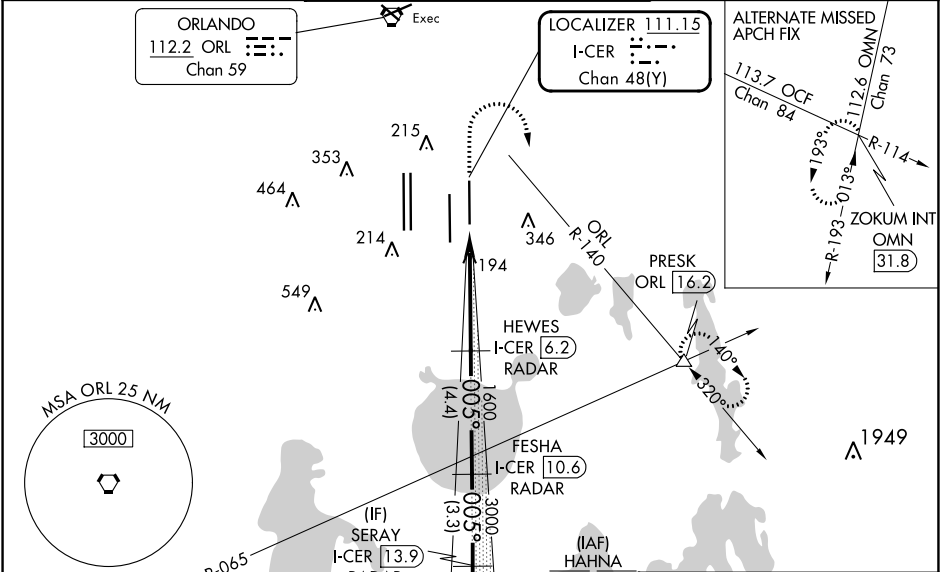
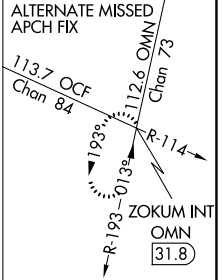
MISSED APPROACH: Climb to 500 then climbing right turn to 3000 on ORL VORTAC R-140 to PRESK INT/ ORL 16.2 DME and hold, continue climb-in-hold to 3000.

Simultaneous approach authorized. Requires specific OPSPEC, MSPEC, or LOA approval. Bright lights on highway midway between Rwy 35L and Rwy 35R may be mistaken for runway lights. When using alternate missed approach, simultaneous approach NA.

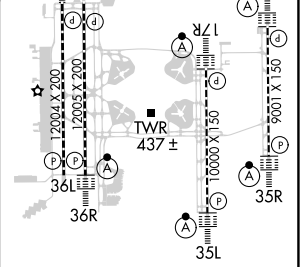
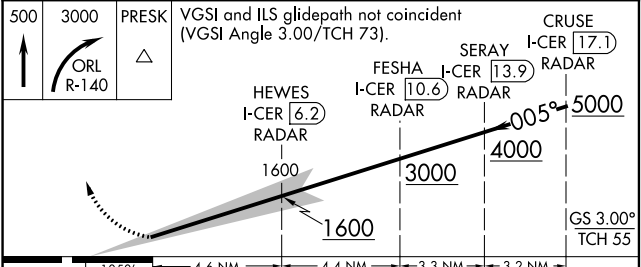
D-ATIS ARR 121.25 DEP 120.525	ORLANDO APP CON 124.8 307.0	ORLANDO TOWER 118.45 253.5 (Rwys 17L-35R, 17R-35L) 124.3 253.5 (Rwys 18L-36R, 18R-36L)	GND CON 126.4 (East) 121.8 (West)	CLNC DEL 134.7 341.7	CPDLC
---	---------------------------------------	--	---	--	-------

ORLANDO
112.2 ORL
Chan 59

LOCALIZER **111.15**
I-CER
Chan 48 (Y)



MSA ORL 25 NM 3000	116.0 LAL Chan 107	R-065	ORL 16.2	PRESK	HEWES I-CER 6.2 RADAR	FESHA I-CER 10.6 RADAR	SERAY I-CER 13.9 RADAR	CRUSE I-CER 17.1 RADAR	HAHNA (IAF) 6000 2T0K	ELEV 96	TDZE 90
------------------------------	-----------------------	-------	----------	-------	------------------------------	-------------------------------	-------------------------------	-------------------------------	------------------------------	----------------	----------------



CATEGORY	A	B	C	D
S-ILS 35R	RA 157/14 150 DA 240			

SA CATEGORY I ILS - SPECIAL AIRCREW & AIRCRAFT CERTIFICATION REQUIRED

HIRL all Rwys
REIL Rwy 36L
TDZ/CL Rwys 17L/R, 18R, 35L/R and 36R

SE-3, 28 NOV 2024 to 26 DEC 2024

SE-3, 28 NOV 2024 to 26 DEC 2024