

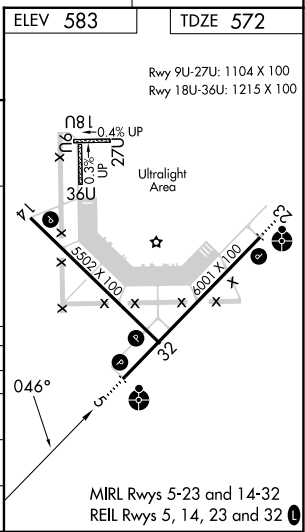
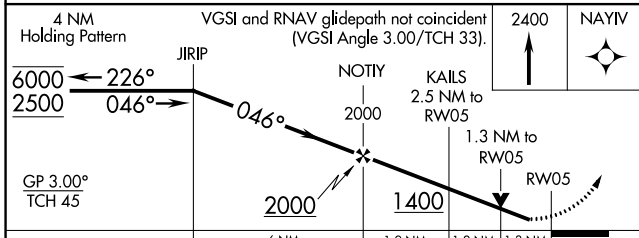
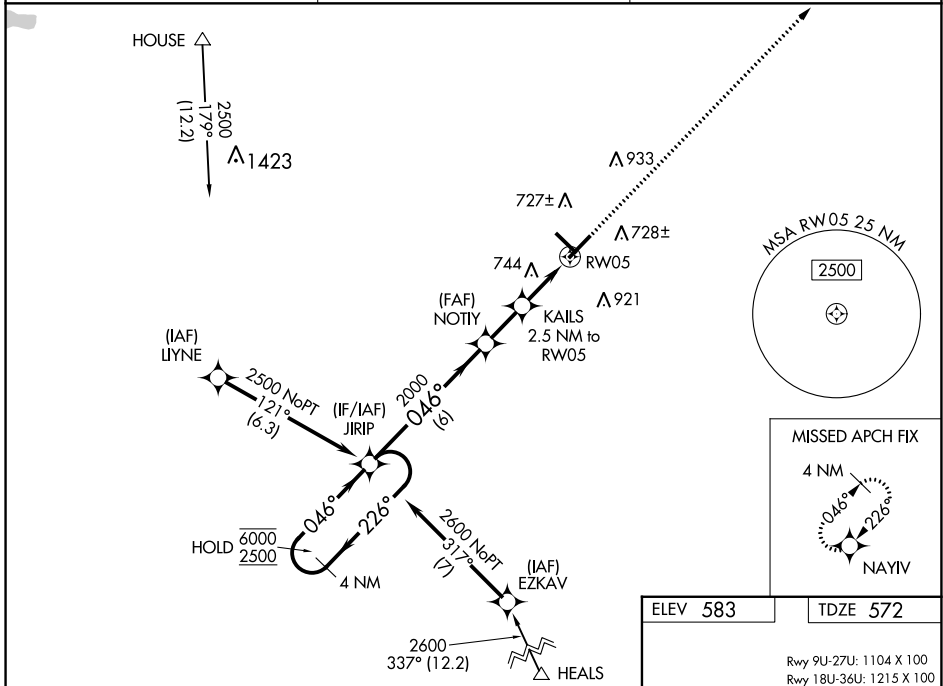
WAAS CH 53704 W05A	APP CRS 046°	Rwy Idg TDZE Apt Elev	6001 572 583
--	------------------------	-----------------------------	---

RNAV (GPS) RWY 5

FREEMAN MUNI (SE.R)

RNP APCH - GPS.		ODALS	MISSED APPROACH: Climb to 2400 direct NAYIV and hold.
▼ ▲ NA	Rwy 5 helicopter visibility reduction below 3/4 SM NA. Inop table does not apply to LPV all Cats and LNAV Cats A/B. For uncompensated Baro-VNAV systems, LNAV/VNAV NA below -16°C or above 54°C. For inop ALS, increase LNAV/VNAV Cats C/D visibility to 1 3/8 SM.	☉ ⋮	

AWOS-3 119.425	LOUISVILLE APP CON 132.075 327.0	UNICOM 122.8 (CTAF)
--------------------------	--	-------------------------------



CATEGORY	A	B	C	D
LPV DA		834-1	262 (300-1)	
LNAV/VNAV DA		1017-1 1/8	445 (500-1 1/8)	
LNAV MDA	1000-1	428 (500-1)	1000-1 1/8	428 (500-1 1/8)
CIRCLING	1080-1 497 (500-1)	1140-1 557 (600-1)	1240-1 1/4 657 (700-1 1/4)	1240-2 657 (700-2)

EC-2, 28 NOV 2024 to 26 DEC 2024

EC-2, 28 NOV 2024 to 26 DEC 2024