

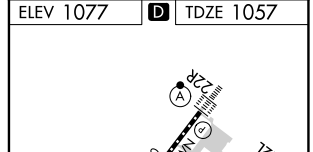
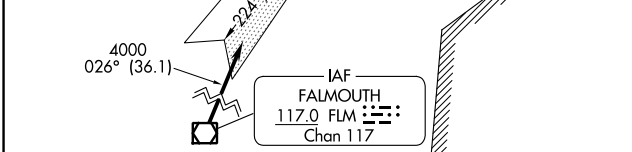
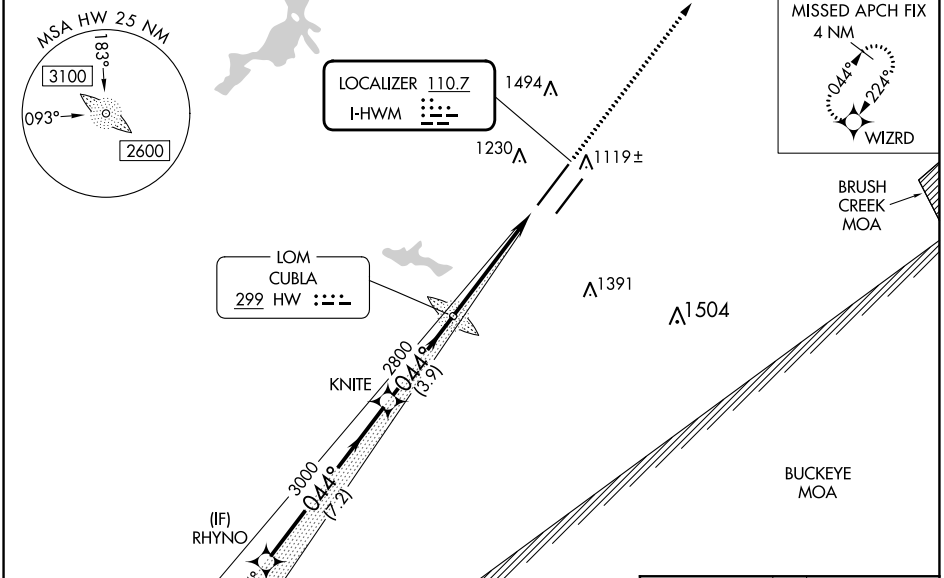
LOC I-HWM <b>110.7</b>	APP CRS <b>044°</b>	Rwy Idg <b>10701</b> TDZE <b>1057</b> Apt Elev <b>1077</b>
---------------------------	------------------------	--

# ILS or LOC RWY 4L

WILMINGTON AIR PARK (ILN)

RNP APCH - GPS.		MALSR	MISSED APPROACH: Climb to 3000 direct WIZRD and hold.
For inop ALS, increase S-LOC 4L Cats C and D visibility to 1 1/2 SM.			

D-ATIS <b>124.925</b>	COLUMBUS APP CON <b>118.85 269.275</b>	WILMINGTON TOWER <b>119.475</b>	GND CON <b>121.6</b>	CLNC DEL <b>128.85</b>
--------------------------	---	------------------------------------	-------------------------	---------------------------



GS 3.00° TCH 50	7.2 NM	3.9 NM	5 NM	3000	WIZRD
CATEGORY	A	B	C	D	
S-ILS 4L	1257/24		200 (200-1/2)		
S-LOC 4L	1520/24 463 (500-1/2)		1520/50 463 (500-1)		
CIRCLING	1560-1 483 (500-1)		1860-2 1/4 783 (800-2 1/4)		1860-2 1/2 783 (800-2 1/2)

TDZ/CL Rwy 22L and 22R					
HIRL Rwy 4L-22R and 4R-22L					
FAF to MAP 5 NM					
Knots	60	90	120	150	180
Min:Sec	5:00	3:20	2:30	2:00	1:40

EC-2, 28 NOV 2024 to 26 DEC 2024

EC-2, 28 NOV 2024 to 26 DEC 2024