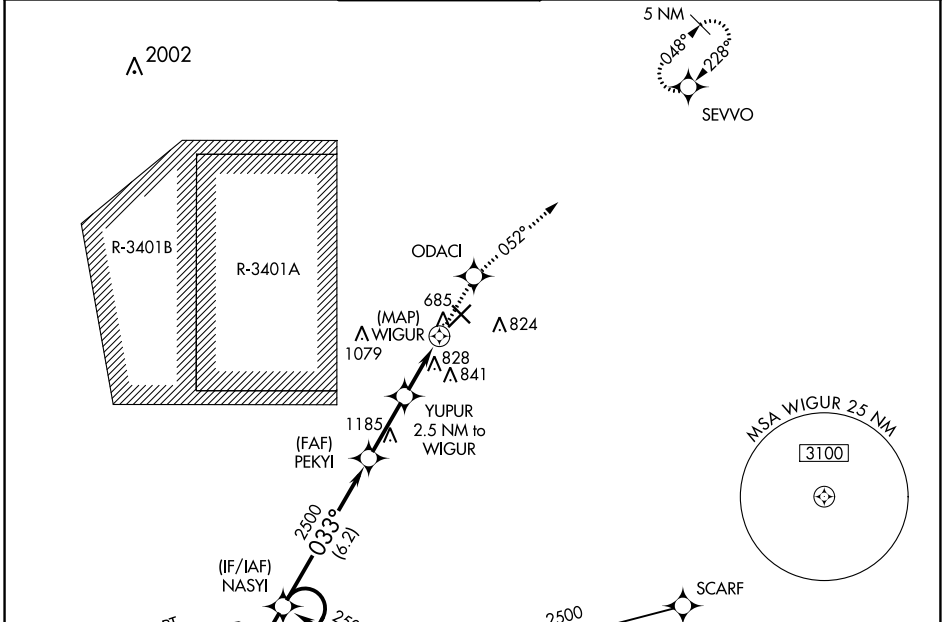


APP CRS <b>033°</b>	Rwy Idg <b>6401</b>
	TDZE <b>653</b>
	Apt Elev <b>656</b>

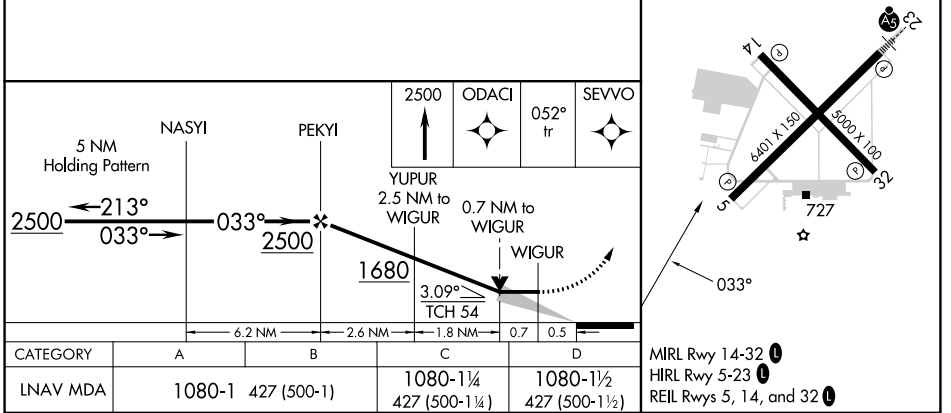
# RNAV (GPS) RWY 5

COLUMBUS MUNI (BAK)

RNP APCH.		MISSED APPROACH: Climb to 2500 direct ODACI and on 052° track to SEVVO and hold.	
<p>▼ If local altimeter setting not received, use Indianapolis Intl altimeter setting and increase all MDAs 100 feet. VDP NA when using Indianapolis Intl altimeter setting.</p>			
AWOS-3 <b>119.75</b>	INDIANAPOLIS APP CON <b>134.85 317.8</b>	COLUMBUS TOWER ★ <b>118.6 (CTAF) 0</b>	GND CON <b>121.6</b>
		CLNC DEL <b>134.85</b> (When twr closed)	UNICOM <b>122.95</b>



(IAF) HOUSE	2500 NoPT 074° (7.9)	2500 033° (6.2)	2500 NoPT 303° (5.1)	2500 259° (10.3)	SCARF
-------------	----------------------------	-----------------------	----------------------------	------------------------	-------



CATEGORY	A	B	C	D
RNAV MDA	1080-1	427 (500-1)	1080-1½ 427 (500-1½)	1080-1½ 427 (500-1½)

MIRL Rwy 14-32  
HIRL Rwy 5-23  
REIL Rws 5, 14, and 32

EC-2, 28 NOV 2024 to 26 DEC 2024

EC-2, 28 NOV 2024 to 26 DEC 2024