


VORTAC PIA 115.2 Chan 99	APP CRS 281°	Rwy Idg 10104 TDZE 651 Apt Elev 660
--	------------------------	--

VOR/DME or TACAN RWY 31

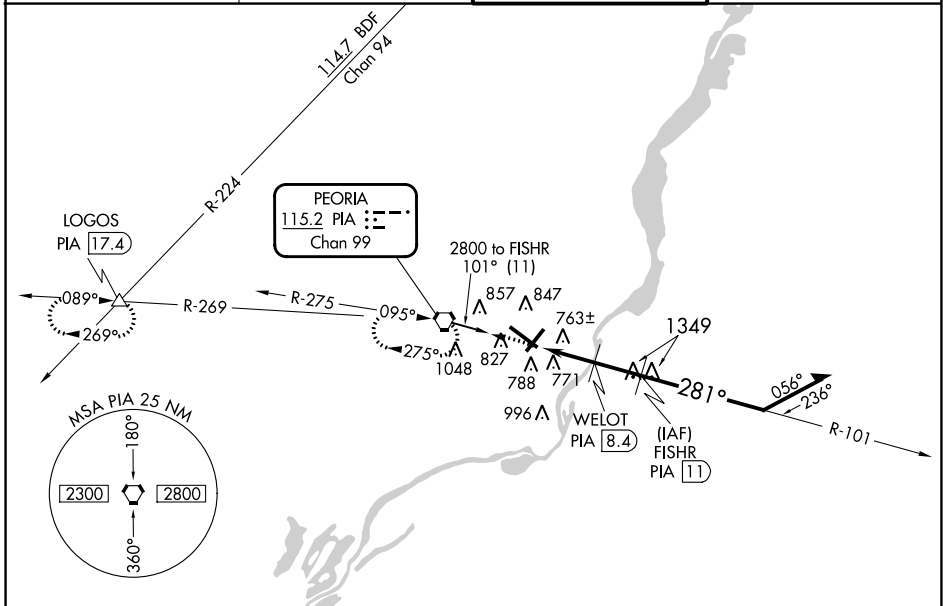
GENERAL DOWNING-PEORIA INTL(PIA)

⚠ If local altimeter setting not available, use Logan County altimeter setting and increase all MDAs 100 feet. Inoperative table does not apply. Straight-in and Circling Rwy 31 NA at night. Circling Rwy 13 NA at night. Rwy 31 helicopter visibility reduction below RVR 5000 NA.

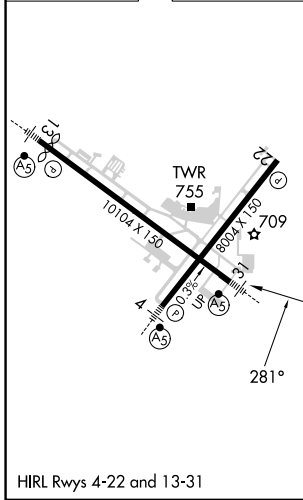
MALSR 


MISSED APPROACH: Climb to 2800 direct PIA VORTAC and hold, continue climb-in-hold to 2800. (TACAN aircraft continue via PIA R-269 to LOGOS Int/PIA 17.4 DME and hold west, right turn, 089° inbound).

ATIS 126.1 282.2	SAINT LOUIS APP CON 125.8 269.2	PEORIA TOWER 124.0 353.85	GND CON 121.85 348.6
----------------------------	---	-------------------------------------	--------------------------------



ELEV 660	D	TDZE 651
----------	----------	----------



2800 PIA 	FISHR PIA 11	Remain within 10 NM		
WELOT PIA 8.4	2800			
PIA 5.1	2600			
1760	3.05° TCH 55			
3.3 NM	2.6 NM			
CATEGORY	A	B	C	D
S-31	1040/50 389 (400-1)		1040/60 389 (400-1½)	
C CIRCLING	1160-1 499 (500-1)		1180-1½ 519 (600-1½)	
			1400-2 739 (800-2)	

EC-3, 28 NOV 2024 to 26 DEC 2024

EC-3, 28 NOV 2024 to 26 DEC 2024