

LOC I-BWG 108.75	APP CRS 034°	Rwy Idg TDZE Apt Elev	6500 547 547
----------------------------	------------------------	-----------------------------	---

ILS Y or LOC Y RWY 3

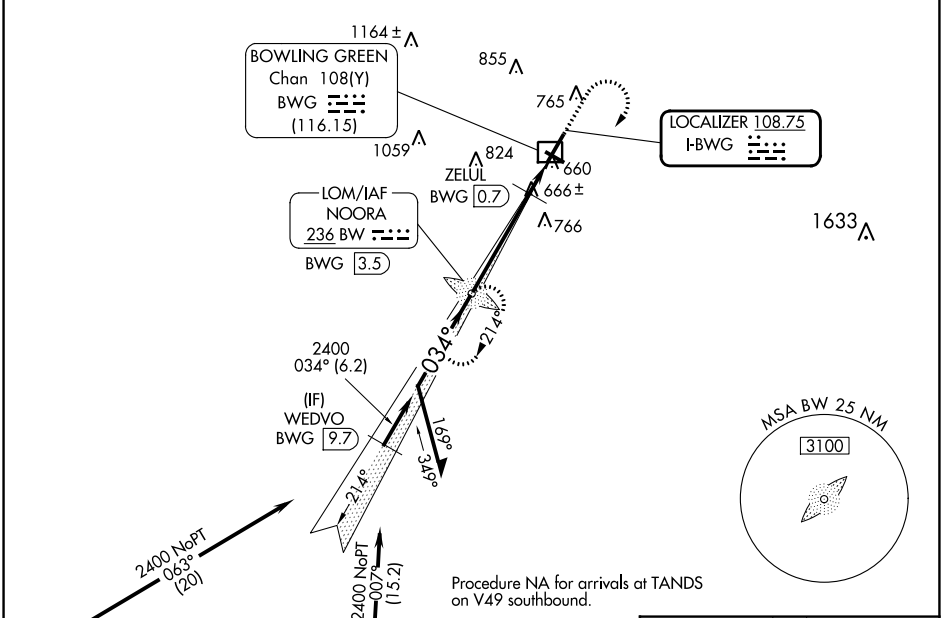
BOWLING GREEN-WARREN COUNTY RGNL (BWG)

ADF required.
RNAV-1 GPS or RADAR required for procedure entry.

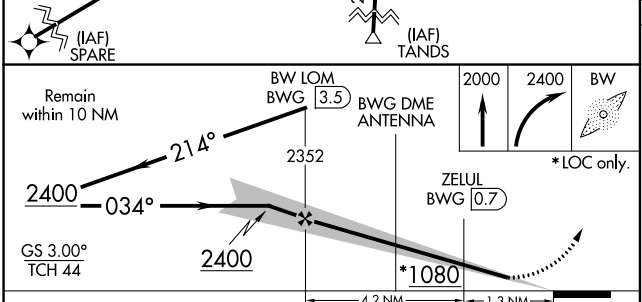
▼ Circling Rwy 30 NA at night.
**DME from BWG DME.

MISSED APPROACH: Climb to 2000 then climbing right turn to 2400 direct NOORA LOM and hold.

ASOS 127.825	MEMPHIS CENTER 133.85 317.6	UNICOM 123.0 (CTAF) 0
------------------------	---------------------------------------	---------------------------------



Procedure NA for arrivals at TANDS on V49 southbound.



ELEV 547	D TDZE 547
REIL Rwy 3 and 21	
MIRL Rwy 12-30	
HIRL Rwy 3-21	

S-LOC 3		FAF to MAP 5.5 NM				
Knots	60	90	120	150	180	
Min:Sec	5:30	3:40	2:45	2:12	1:50	

CATEGORY	A	B	C	D
S-ILS 3	747-3/4 200 (200-3/4)			
S-LOC 3	1080-1	533 (600-1)	1080-1 1/2	533 (600-1 1/2)
C CIRCLING	1080-1 533 (600-1)	1120-1 573 (600-1)	1160-1 3/4 613 (700-1 3/4)	1200-2 653 (700-2)
ZELUL FIX MINIMUMS **				
S-LOC 3	920-1 373 (400-1)			
C CIRCLING	1000-1 453 (500-1)	1120-1 573 (600-1)	1160-1 3/4 613 (700-1 3/4)	1200-2 653 (700-2)

SE-1, 28 NOV 2024 to 26 DEC 2024

SE-1, 28 NOV 2024 to 26 DEC 2024