

APP CRS	Rwy Idg	<b>7200</b>
<b>137°</b>	TDZE	<b>579</b>
	Apt Elev	<b>589</b>

# RNAV (GPS) RWY 14

TERRE HAUTE RGNL (HUF')

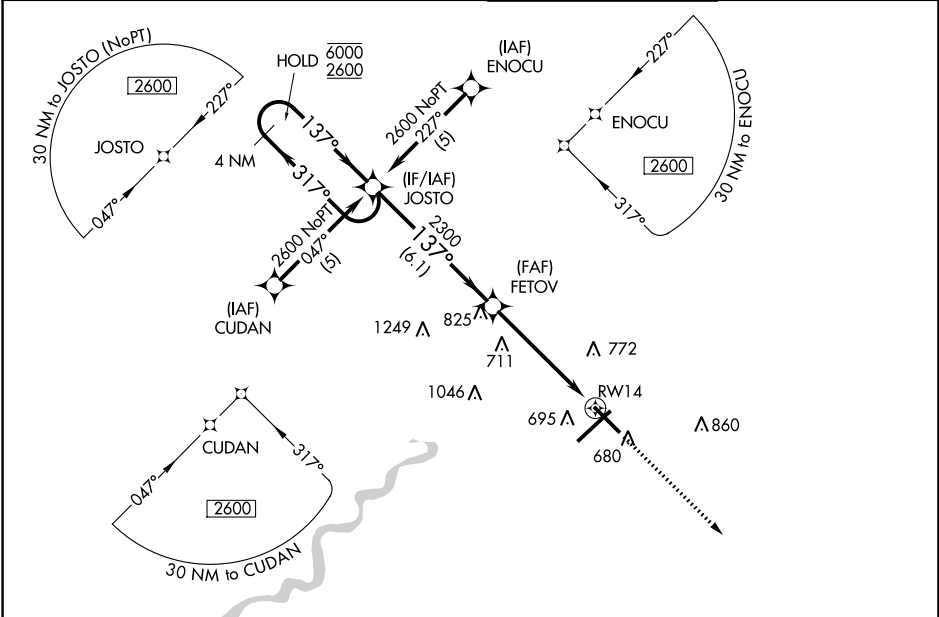
RNP APCH.

**V** VDP NA when using Paris altimeter setting. When local altimeter setting not received, use Paris altimeter setting and increase all MDA 80 feet, increase LNAV and Circling Cat C/D visibility 1/4 SM. Rwy 14 helicopter visibility reduction below 3/4 SM NA.

**A** ASR

**MISSED APPROACH:**  
Climb to 2600 direct CORIE and hold.

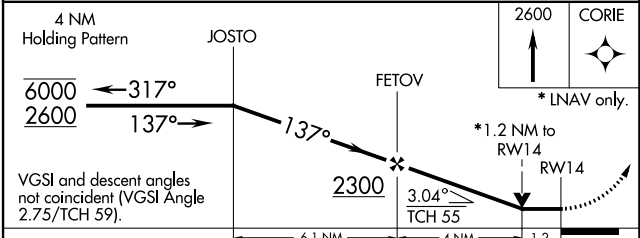
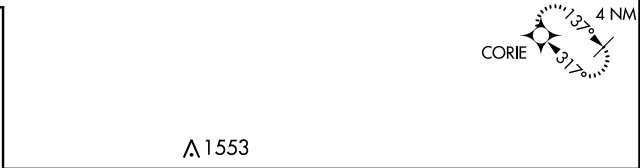
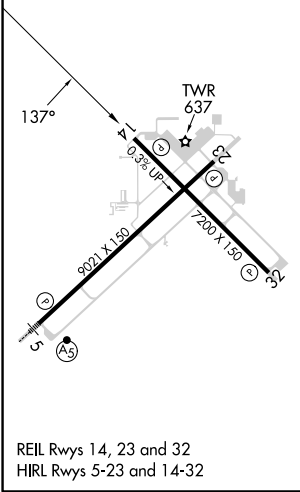
ATIS <b>127.5 269.375</b>	HULMAN APP CON <b>125.45 339.8</b>	HULMAN TOWER <b>134.725 322.475</b>	GND CON <b>121.6 348.6</b>
------------------------------	---------------------------------------	----------------------------------------	-------------------------------



EC-2, 28 NOV 2024 to 26 DEC 2024

EC-2, 28 NOV 2024 to 26 DEC 2024

ELEV	<b>589</b>	<b>D</b>	TDZE	<b>579</b>
------	------------	----------	------	------------



CATEGORY	A	B	C	D
LNAV MDA	1140-1	561 (600-1)	1140-1½	561 (600-1½)
<b>C</b> CIRCLING	1140-1	551 (600-1)	1220-1¾ 631 (700-1¾)	1220-2 631 (700-2)