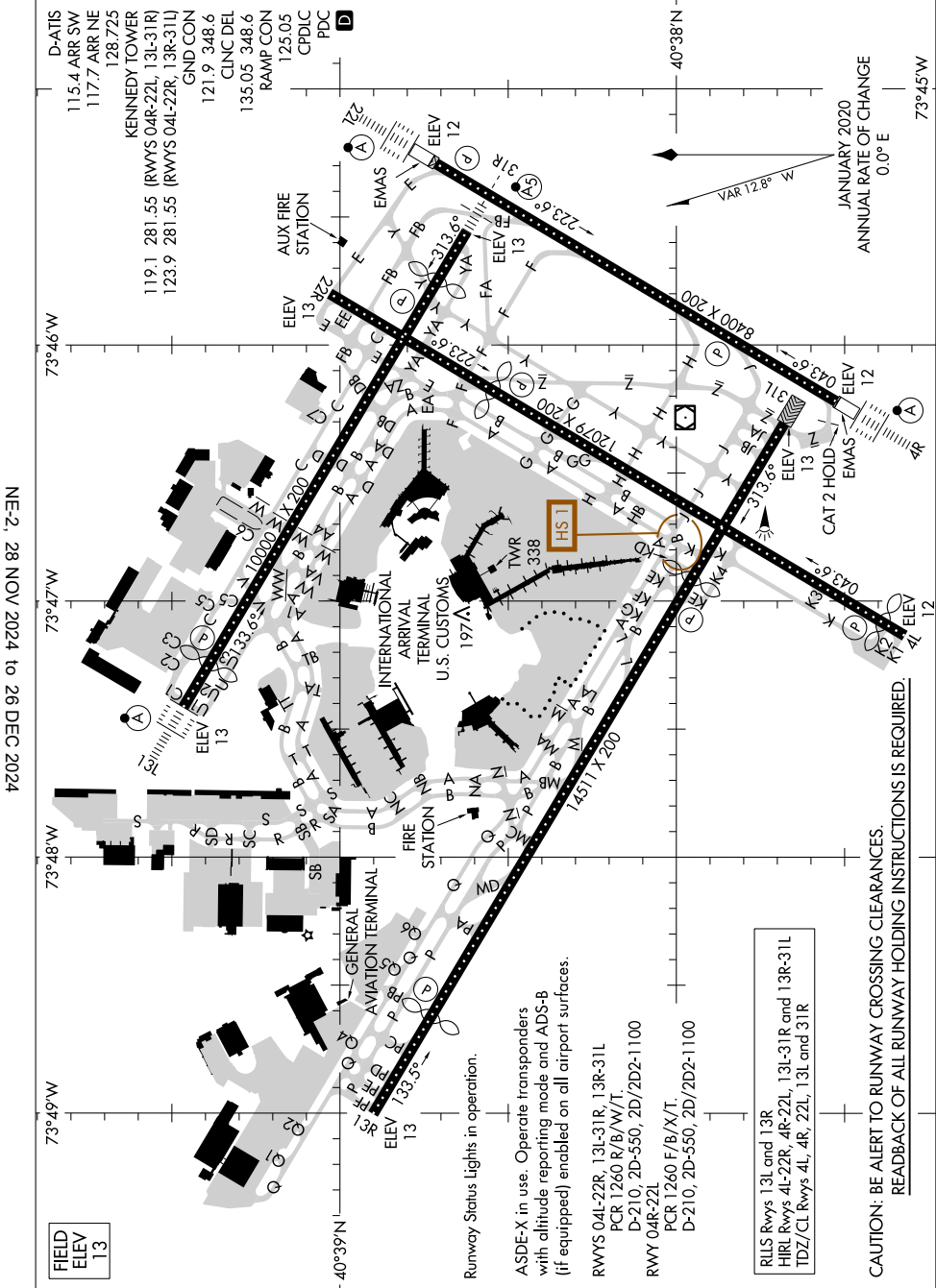


AIRPORT DIAGRAM

AL-610 (FAA)

JOHN F KENNEDY INTL (JFK)
NEW YORK, NEW YORK



NE-2, 28 NOV 2024 to 26 DEC 2024

NE-2, 28 NOV 2024 to 26 DEC 2024

FIELD
ELEV
13

AIRPORT DIAGRAM

NEW YORK, NEW YORK
JOHN F KENNEDY INTL (JFK)

Runway Status lights in operation.

ASDE-X in use. Operate transponders with altitude reporting mode and ADS-B (if equipped) enabled on all airport surfaces.

RWYS 04L-22R, 13L-31R, 13R-31L
PCR 1260 R/B/W/T.
D-210, 2D-550, 2D/2D2-1100

RWY 04R-22L
PCR 1260 F/B/X/T
D-210, 2D-550, 2D/2D2-1100

RLLS Rwy 13L and 13R
HRL Rwy 4L-22R, 4R-22L, 13L-31R and 13R-31L
TDZ/CL Rwy 4L, 4R, 22L, 13L and 31R

CAUTION: BE ALERT TO RUNWAY CROSSING CLEARANCES.
READBACK OF ALL RUNWAY HOLDING INSTRUCTIONS IS REQUIRED.

D-ATIS
115.4 ARR SW
117.7 ARR NE
128.725
KENNEDY TOWER
119.1 281.55 (RWYS 04R-22L, 13L-31R)
123.9 281.55 (RWYS 04L-22R, 13R-31L)
GND CON
121.9 348.6
CLNC DEL
135.05 348.6
RAMP CON
125.05
PDC

40°38'N
40°38'N
73°45'W
73°45'W
ANNUAL RATE OF CHANGE
0.0° E
VAR 12.8° M
JANUARY 2020