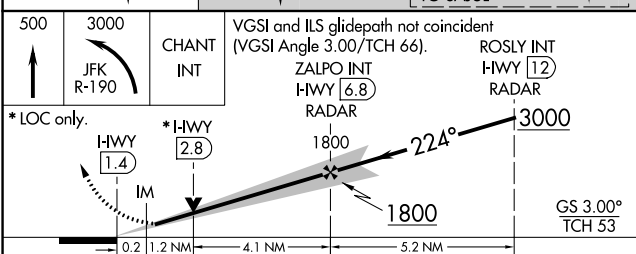
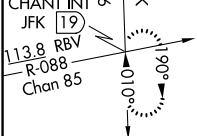
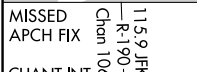
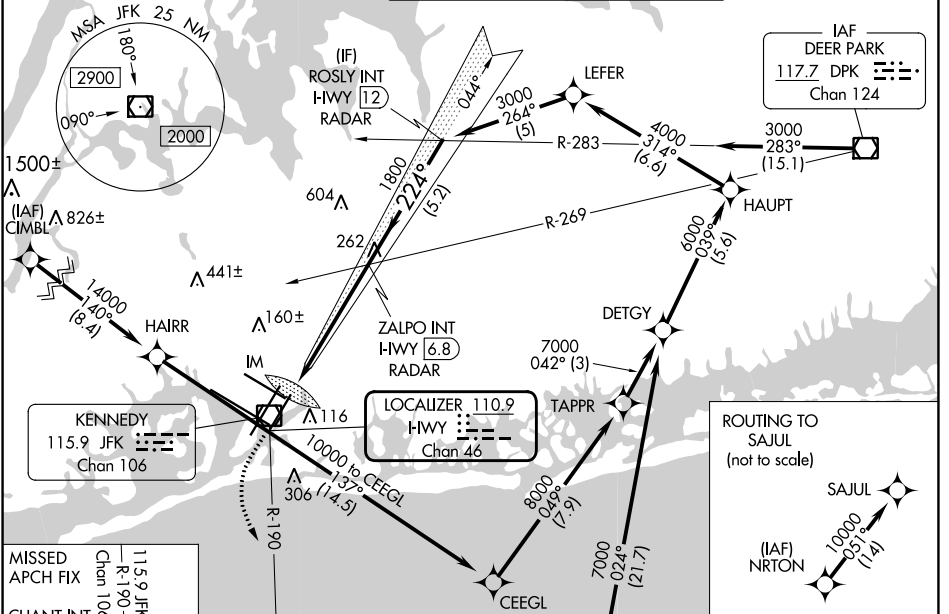


LOC/DME I-HWY	APP CRS	Rwy Idg	<b>8400</b>
<b>110.9</b>	<b>224°</b>	TDZE	<b>12</b>
Chan <b>46</b>		Apt Elev	<b>13</b>

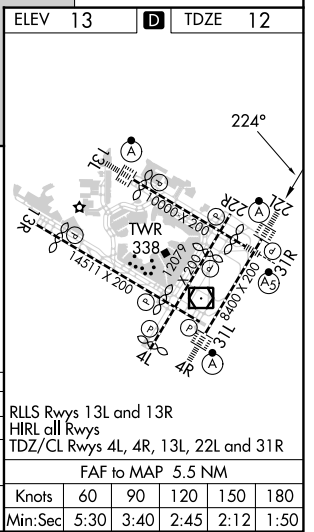
# ILS or LOC RWY 22L

JOHN F KENNEDY INTL (JFK)

RNAV 1-GPS or RADAR required for procedure entry.		ALSIF-2		MISSED APPROACH: Climb to 500 then climbing left turn to 3000 on JFK VOR/DME R-190 to CHANT INT/19 DME and hold.	
From CIMBL, NRTON: RNAV 1-GPS required.		A			
Simultaneous approach authorized.					
D-ATIS (ARR/DEP) (ARR-NE) (ARR-SW)	NEW YORK APP CON	KENNEDY TOWER Rwys 4R/22L and 13L/31R		GND CON	CLNC DEL
<b>128.725 117.7 115.4</b>	<b>128.125 269.0</b>	<b>119.1 281.55</b> <b>123.9 281.55</b>		<b>121.9</b> <b>348.6</b>	<b>135.05</b> <b>348.6</b>
		Rwys 4L/22R and 13R/31L			CPDLC



ELEV	13	TDZE	12
500	3000	CHANT INT	
*LOC only.		*H-WY	
H-WY 1.4	H-WY 2.8	VGSi and ILS glidepath not coincident (VGSi Angle 3.00/TCH 66).	
0.2 1.2 NM		ZALPO INT H-WY [6.8] RADAR	
4.1 NM		ROSLY INT H-WY [12] RADAR	
5.2 NM		GS 3.00° TCH 53	
CATEGORY	A	B	C
S-ILS 22L	212/18		200 (200-1/2)
S-LOC 22L	520/24	508 (600-1/2)	520/55 508 (600-1)
CIRCLING	640-1	627 (700-1)	680-1 3/4 667 (700-1 3/4) 680-2 667 (700-2)



NE-2, 28 NOV 2024 to 26 DEC 2024

NE-2, 28 NOV 2024 to 26 DEC 2024