

APP CRS 314°	Rwy Idg 11247 TDZE 13 Apt Elev 13
------------------------	--

RNAV (RNP) Z RWY 31L

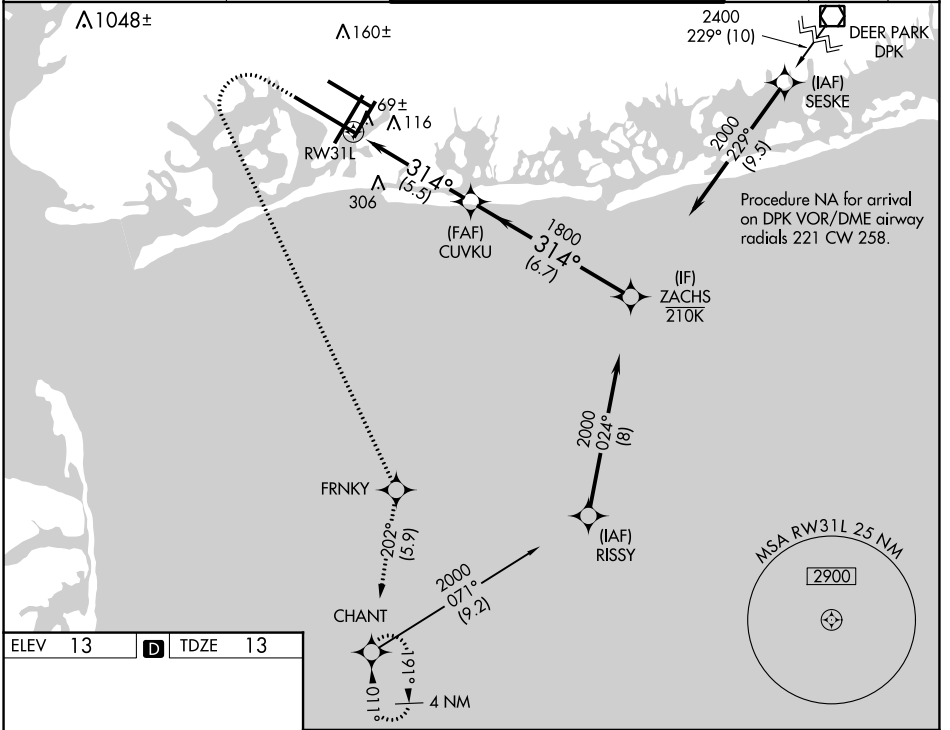
JOHN F KENNEDY INTL (JFK)

RNP AR APCH.

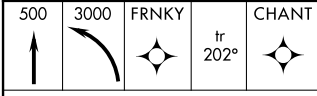
▼ For uncompensated Baro-VNAV systems, procedure NA below -12°C or above 54°C. Simultaneous approach authorized. Use of FD or AP required during simultaneous operations.

MISSED APPROACH: Climb to 500 then climbing left turn to 3000 direct FRNKY and on track 202° to CHANT and hold.

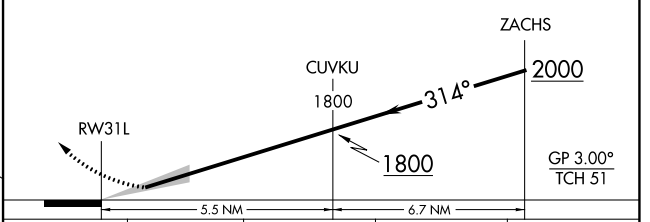
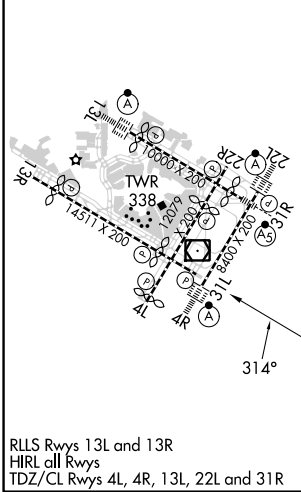
D-ATIS (ARR/DEP)(ARR-NE) (ARR-SW) 128.725 117.7 115.4	NEW YORK APP CON 128.125 269.0	KENNEDY TOWER Rwys 4R/22L and 13L/31R 119.1 281.55 Rwys 4L/22R and 13R/31L 123.9 281.55	GND CON 121.9 348.6	CLNC DEL 135.05 348.6	CPDLC
--	--	---	-------------------------------	---------------------------------	-------



ELEV 13	D	TDZE 13
---------	----------	---------



VGSI and RNAV glidepath not coincident (VGSI Angle 3.00/TCH 74).



CATEGORY	A	B	C	D
RNP 0.30 DA	410-1% 397 (400-1%)			

AUTHORIZATION REQUIRED

NE-2, 28 NOV 2024 to 26 DEC 2024

NE-2, 28 NOV 2024 to 26 DEC 2024