

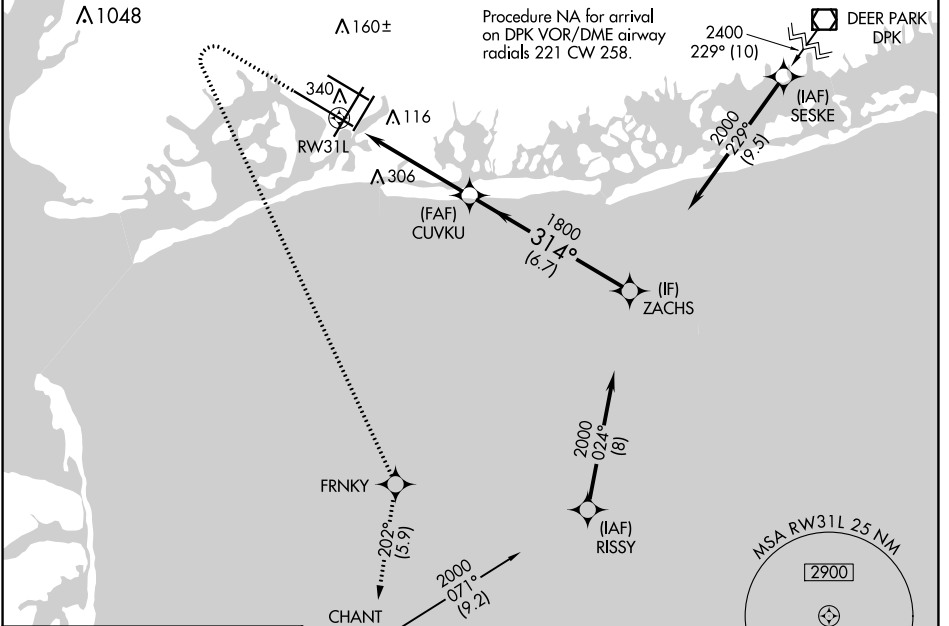
WAAS CH <b>50119</b> <b>W31A</b>	APP CRS <b>314°</b>	Rwy Idg <b>11247</b> TDZE <b>13</b> Apt Elev <b>13</b>
--	------------------------	--

# RNAV (GPS) Y RWY 31L

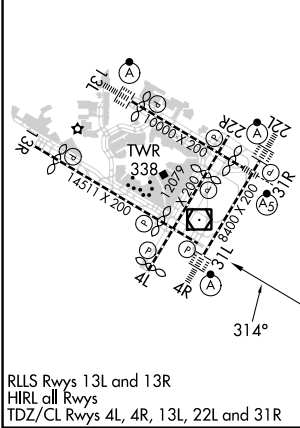
JOHN F KENNEDY INTL (JFK)

RNP APCH.	MISSED APPROACH: Climb to 500 then climbing left turn to 3000 direct FRNKY and on track 202° to CHANT and hold.
<p>Simultaneous approach authorized. For uncompensated Baro-VNAV systems, LNAV/VNAV NA below -12°C or above 54°C. Use of FD or AP required during simultaneous operations. LNAV procedure NA during simultaneous operations.</p>	

D-ATIS (ARR/DEP) (ARR-NE) (ARR-SW) <b>128.725 117.7 115.4</b>	NEW YORK APP CON <b>128.125 269.0</b>	KENNEDY TOWER Rwys 4R/22L and 13L/31R <b>119.1 281.55</b> Rwys 4L/22R and 13R/31L <b>123.9 281.55</b>	GND CON <b>121.9 348.6</b>	CLNC DEL <b>135.05 348.6</b>	CPDLC
---	--	---	-------------------------------	---------------------------------	-------



ELEV 13	<b>D</b>	TDZE 13
---------	----------	---------



RLS Rwys 13L and 13R  
HIRL all Rwys  
TDZ/CL Rwys 4L, 4R, 13L, 22L and 31R

500	3000	FRNKY	CHANT	tr 202°	VGSI and RNAV glidepath not coincident (VGSI Angle 3.00/TCH 74).
*LNAV only.					
RW31L		CUVKU		ZACHS	2000
1.6 NM		3.7 NM		6.7 NM	
1.6 NM	3.7 NM	6.7 NM	GP 3.00° TCH 51		
CATEGORY	A	B	C	D	
LPV DA	213/40		200 (200-¾)		
LNAV/VNAV DA	541-1¾		528 (600-1¾)		
LNAV MDA	600/55	587 (600-1)		600-1¾ 587 (600-1¾)	
<b>C</b> CIRCLING	640-1	627 (700-1)		680-1¾ 667 (700-1¾) 680-2 667 (700-2)	

NE-2, 28 NOV 2024 to 26 DEC 2024

NE-2, 28 NOV 2024 to 26 DEC 2024