


LOC I-FNT 109.9	APP CRS 094°	Rwy Idg 7201 TDZE 771 Apt Elev 782
---------------------------	------------------------	---

ILS or LOC RWY 9

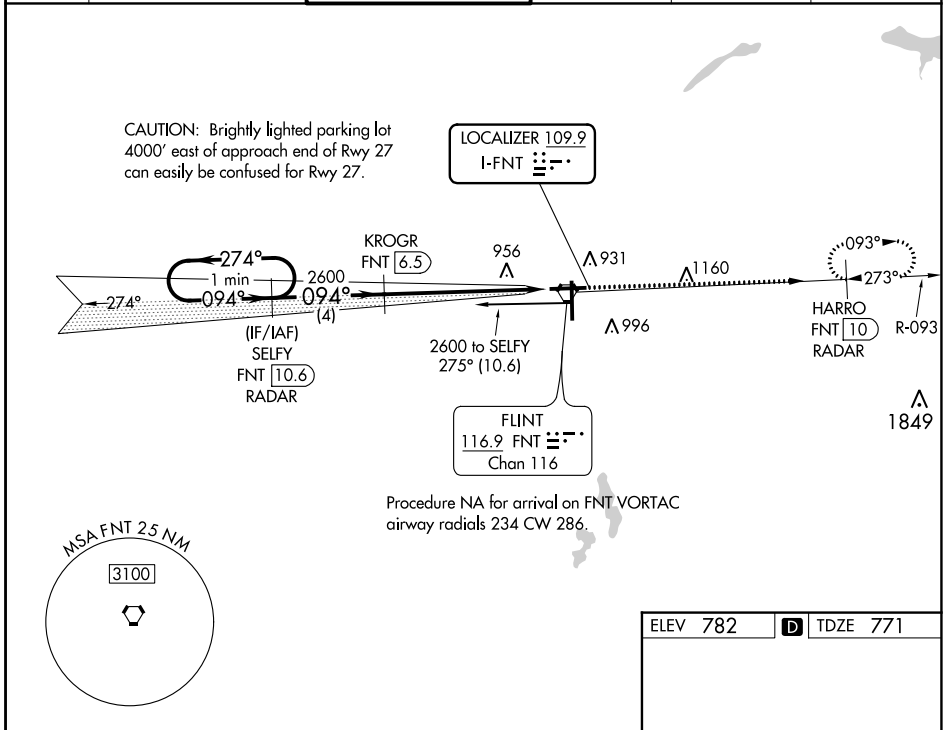
BISHOP INTL (F'NT)

DME or RADAR required for procedure entry. DME or RADAR required.

▽ DME from FNT VORTAC. Simultaneous reception of I-FNT and FNT DME required. For inop ALS, increase S-LOC 9 Cat C/D visibility to 1 3/8 SM.
▲ **RVR 1800 authorized with use of FD or AP or HUD to DA.

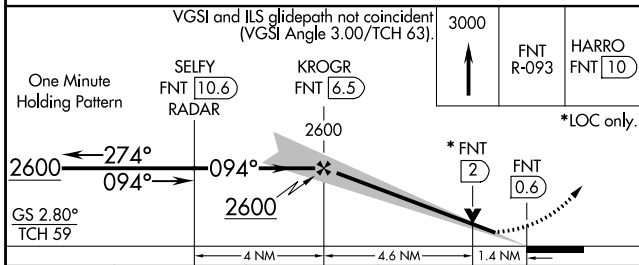
MALSR
 MISSED APPROACH: Climb to 3000 on FNT VORTAC R-093 to HARRO/FNT VORTAC 10 DME/RADAR and hold.

ATIS 133.15	GREAT LAKES APP CON * 118.8 257.9	FLINT TOWER * 126.3 (CTAF) 257.9	GND CON 121.9	CLNC DEL 121.75	UNICOM 122.95
-----------------------	---	--	-------------------------	---------------------------	-------------------------

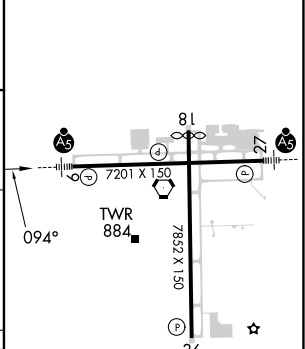


EC-1, 28 NOV 2024 to 26 DEC 2024

EC-1, 28 NOV 2024 to 26 DEC 2024



ELEV 782	D TDZE 771
----------	-------------------



CATEGORY	A	B	C	D
S-ILS 9 **	971/24 200 (200-1/2)			
S-LOC 9	1280/24	509 (500-1/2)	1280/55	509 (500-1)
C CIRCLING	1280-1 498 (500-1)	1300-1 518 (600-1)	1300-1 1/2 518 (600-1 1/2)	1520-2 1/4 738 (800-2 1/4)

HIRL Rwy 9-27 and 18-36 1
REIL Rwy 18 and 36 1
FAF to MAP 6 NM
Knots: 60 90 120 150 180
Min:Sec: 6:00 4:00 3:00 2:24 2:00