

WAAS CH <b>45714</b> <b>W09A</b>	APP CRS <b>094°</b>	Rwy Idg TDZE Apt Elev	<b>7201</b> <b>771</b> <b>782</b>
--	------------------------	-----------------------------	---

# RNAV (GPS) RWY 9

BISHOP INTL (F'NT)

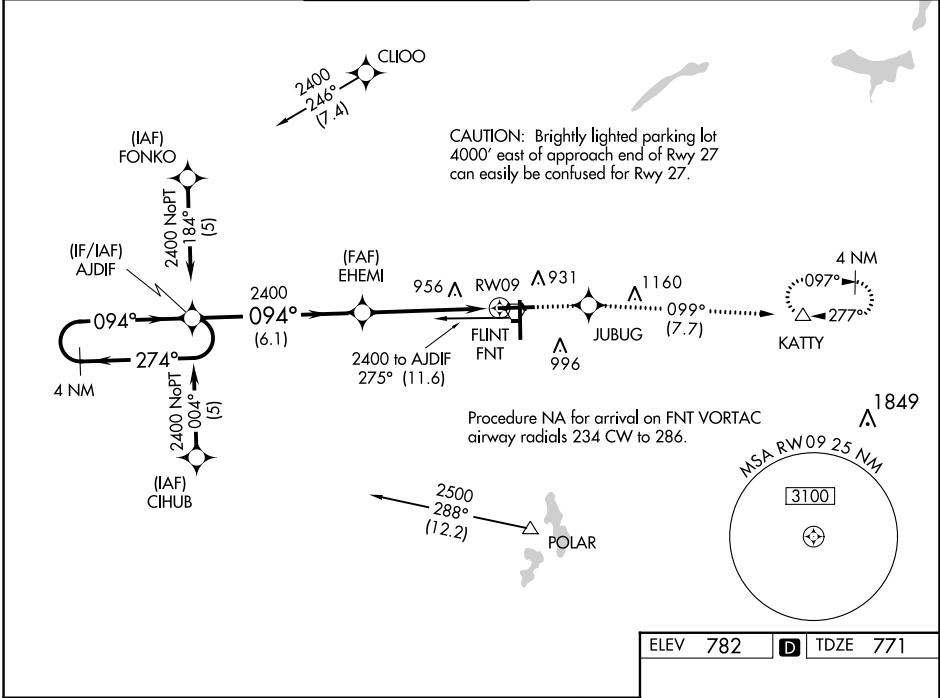
**T**  
**A**

For uncompensated Baro-VNAV systems, LNAV/VNAV NA below -16°C (4°F) or above 54°C (130°F). DME/DME RNP-0.3 NA. For inop ALS, increase LNAV Cat C/D visibility to 1½ SM.  
\*\*RVR 1800 authorized with use of FD or AP or HUD to DA.

MALSR  
A5

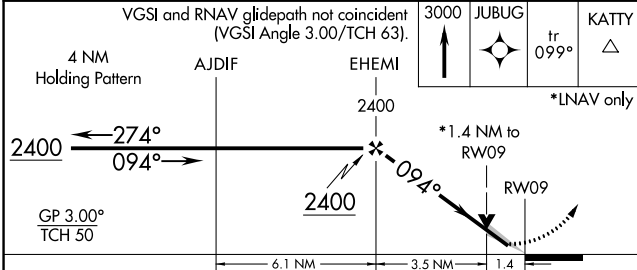
MISSED APPROACH: Climb to 3000 direct JUBUG and on track 099° to KATY and hold.

ATIS <b>133.15</b>	GREAT LAKES APP CON * <b>118.8 257.9</b>	FLINT TOWER * <b>126.3 (CTAF) 257.9</b>	GND CON <b>121.9</b>	CLNC DEL <b>121.75</b>	UNICOM <b>122.95</b>
-----------------------	---	--	-------------------------	---------------------------	-------------------------



EC-1, 28 NOV 2024 to 26 DEC 2024

EC-1, 28 NOV 2024 to 26 DEC 2024



CATEGORY	A	B	C	D
LPV DA **		971/24	200 (200-½)	
LNAV/DA VNAV		1227/50	456 (500-1)	
LNAV MDA	1260/24	489 (500-½)	1260/50	489 (500-1)
CIRCLING	1260-1 478 (500-1)	1300-1 518 (600-1)	1300-1½ 518 (600-1½)	1520-2¼ 738 (800-2¼)

ELEV 782	D	TDZE 771
----------	---	----------

TWR 884

HIRL Rws 9-27 and 18-36  
REIL Rwy 18 and 36