

APP CRS	Rwy Idg	4498
039°	TDZE	612
	Apt Elev	612

RNAV (GPS) RWY 4

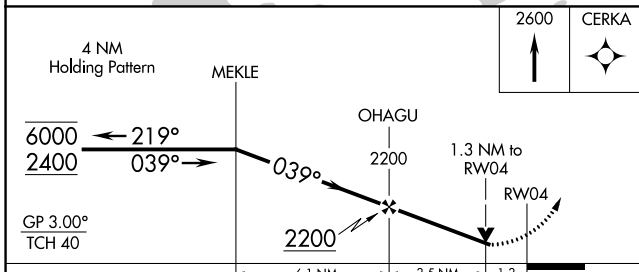
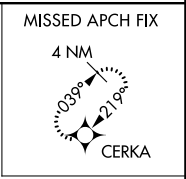
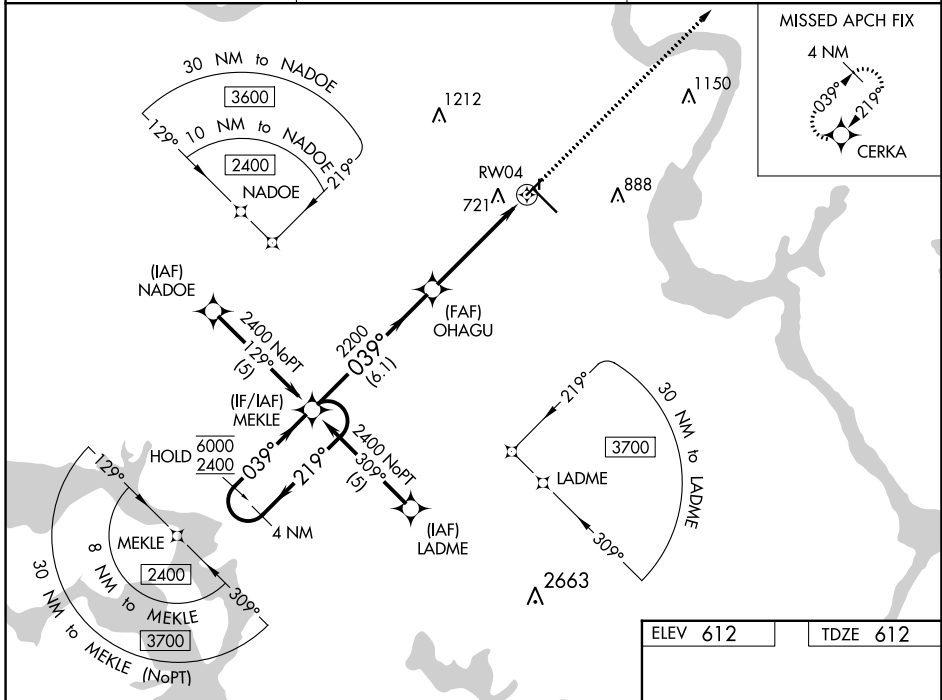
MUSKOGEE-DAVIS RGNL (MKO)

RNP APCH-GPS.

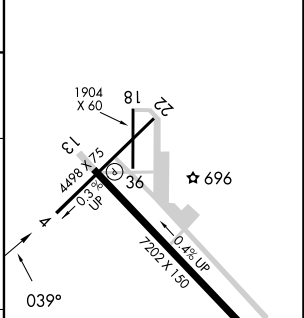
▼ Rwy 4 helicopter visibility reduction below 3/4 SM NA. For uncompensated Baro-VNAV systems, LNAV/VNAV NA below -16°C or above 54°C. Straight-in Rwy 4 NA at night, Circling Rwy 4, 18, 22, 36 NA at night.

▲ MISSED APPROACH: Climb to 2600 direct CERKA and hold.

ASOS 135.025	FORT WORTH CENTER 132.2 338.35	UNICOM 122.8 (CTAF) 0
------------------------	--	---------------------------------



ELEV 612	TDZE 612
----------	----------



CATEGORY	A	B	C	D
LNAV/DA	1079-1 3/8		467 (500-1 3/8)	
LNAV MDA	1080-1	468 (500-1)	1080-1 3/8	468 (500-1 3/8)
CIRCLING	1140-1 528 (600-1)	1180-1 568 (600-1)	1320-2 708 (800-2)	1400-2 1/2 788 (800-2 1/2)

REIL Rwy 13 **0**
MIRL Rwy 13-31 **0**

SC-1, 28 NOV 2024 to 26 DEC 2024

SC-1, 28 NOV 2024 to 26 DEC 2024