

LOC/DME I-PIE <b>109.1</b> Chan <b>28</b>	APP CRS <b>176°</b>	Rwy Idg <b>9180</b> TDZE <b>7</b> Apt Elev <b>11</b>
---	------------------------	--

# ILS RWY 18 (SA CAT I & II)

ST PETE-CLEARWATER INTL (PIE)

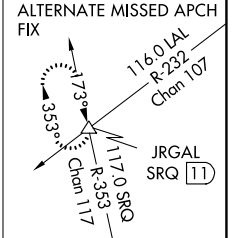
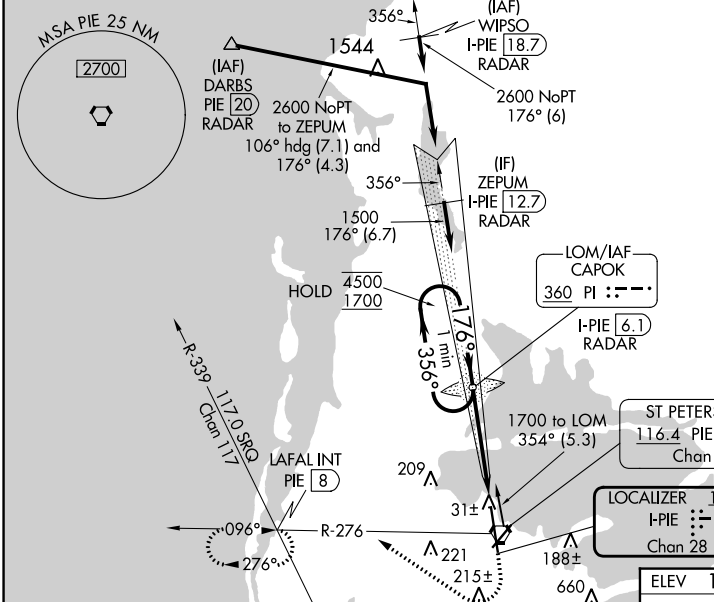
DME, RADAR, or ADF required.

SA CAT I & II: Requires specific OPSPEC, MSPEC, or LOA approval.  
SA CAT I & II S-ILS 18 NA when control tower closed.

MALSR

MISSED APPROACH: Climb to 600 then climbing right turn to 1700 on heading 330° and PIE VORTAC R-276 to LAFAL INT/PIE 8 DME and hold, continue climb-in-hold to 1700.

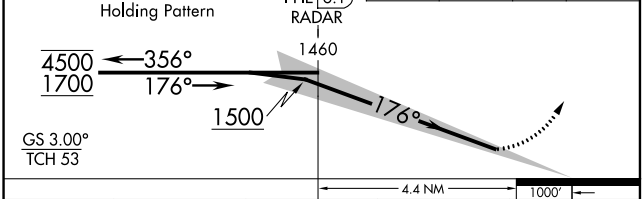
ATIS <b>134.5</b>	TAMPA APP CON <b>125.3 316.05</b>	ST PETERSBURG-CLEARWATER TOWER ★ <b>118.3 (CTAF) 257.8</b>	GND CON <b>121.9 348.6</b>	CLNC DEL <b>120.6 350.2</b>	UNICOM <b>122.95</b>
----------------------	--------------------------------------	---	-------------------------------	--------------------------------	-------------------------



VGSI and ILS glidepath not coincident (VGSI Angle 3.00/TCH 68).

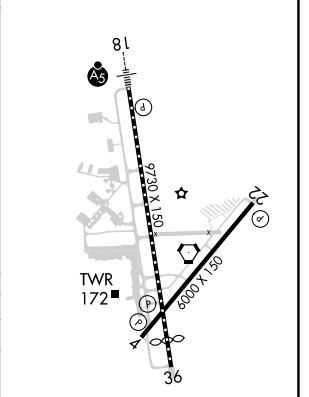
One Minute Holding Pattern

PI LOM CAPOK I-PIE [6.1] RADAR



ELEV 11	TDZE 7
---------	--------

CATEGORY	A	B	C	D
S-ILS 18	SA CAT I RA 157/14	150 DA 157		
S-ILS 18	SA CAT II RA 107/12	100 DA 107		



## SA CATEGORY I & II ILS - SPECIAL AIRCREW & AIRCRAFT CERTIFICATION REQUIRED

TDZ/CL Rwy 18  
HIRL Rwy 18-36  
MIRL Rwy 4-22  
REIL Rwy 4 and 22

SE-3, 28 NOV 2024 to 26 DEC 2024

SE-3, 28 NOV 2024 to 26 DEC 2024